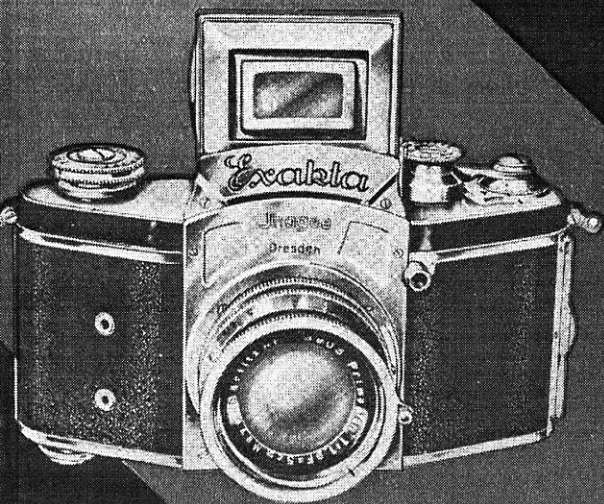


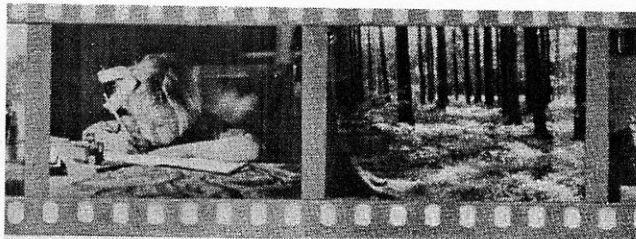
THE
KINE 24x36mm

Exakta

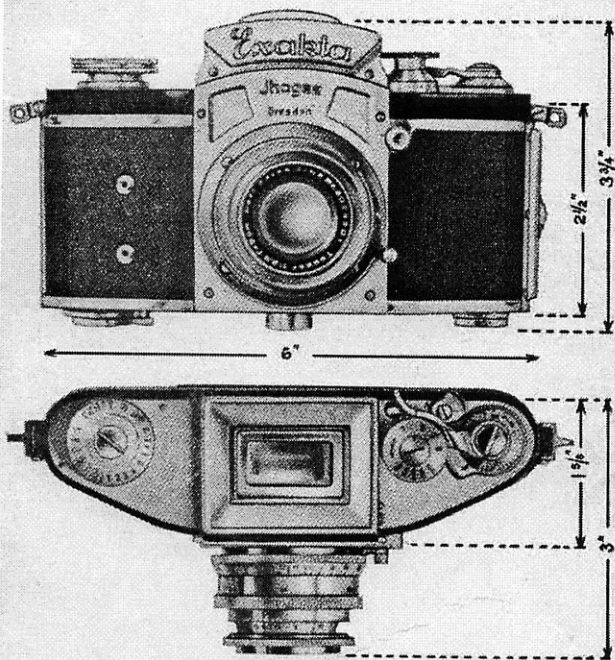


Reflex Camera

For the multi-exposure 35mm
spool, combined with safe and
certain focusing and image
composition on a magnified
ground-glass screen.



KINE Exakta



When corresponding with the Service Department of the importers about uses of the Exakta, Repairs, Accessories, etc., always state Camera Number, Kind of Lens and Lens Number.

Register your camera with the Importers stating dealer's name and address, Camera and Lens Number, Lens type; print your name and address clearly.

This registration may facilitate recovery in case of loss.

KINE EXAKTA Reflex Cameras

In every civilized country . . .

. . . the "Exakta" camera has made friends. During the last few years the unusual advantages of this type of camera have led to great popularity all over the world, and its undeniable technical points have been admitted by everyone who has given it a thorough practical test.

Thus it arose that a second model in the Exakta series came to be designed: this time not taking the medium sized 4x6.5 cm. negative, but the multi-exposure spool of the miniature camera proper.

The new Exakta model: "Kine-Exakta," a precision miniature camera of remarkably wide range.

The most important points of the new model may be summarized as follows: The Kine-Exakta is a miniature camera of the highest quality.

It takes normally 36 exposures on a strip of cine film 63 inches long, each exposure being 24x36 mm. (1x1 1/2") in size. The camera takes normal film cartridges of perforated 35 mm. cine film in the above length.

Should it be desired to remove a portion of the strip after exposure, but without taking the still unexposed section of film out of the camera, a small knife—built into the camera body—can be used to separate the exposed section.

For exposures which are better made at eye-level than at chest-level, or for rapid snapshot work where it is essential to follow the subject with the eye rather than on the ground glass, the built-in frame view-finder in the finder hood of the Kine-Exakta may be used.

The Kine-Exakta is the sole single-lens reflex camera among all the miniature cameras on the market in which a negative size of 24x36 mm (1x1 1/2") is combined with safe and certain focusing and image composition on a ground-glass screen.

This important matter has the result that the range of work which the instrument can undertake is **practically limitless**. Whether lenses of long or short focus are used; whether the distance from the subject to the camera is measured in miles or inches; whether a normal lens is used, or whether the extension tubes are used for very close objects; and whether normal photography or photo-micrography is being done—the image on the ground glass of the Kine-Exakta is precisely the same as that which will subsequently be recorded on the sensitive film. There is not a trace of a difference between the two, whether in focus, depth of focus, or field of the subject included.

The accuracy and convenience of this system places the single lens reflex far above all others.

The explanation of this ease of focusing
 . . . will prove interesting to the amateur photographer, for the difficulties involved were more than considerable.

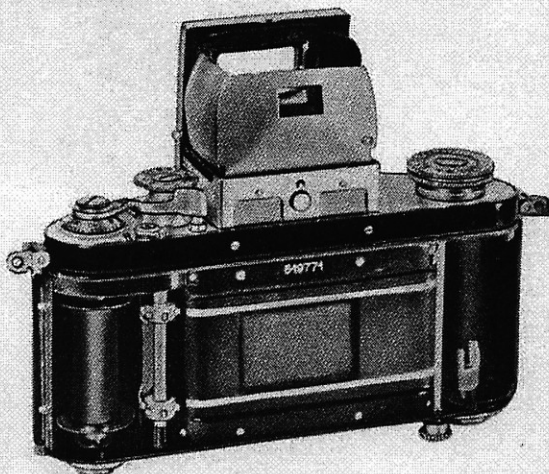
Focusing is arranged just as in all other true reflex cameras, on a horizontal ground-glass screen, on to which an image is thrown from the camera lens by means of an oblique mirror. Since the accuracy required in focusing the miniature negative is very great—for the circle of confusion is reckoned in this size as 1/750th of an inch—the ground glass of the Kine-Exakta has been combined with a special focusing magnifier, and the two together resemble a single, rather thick, plate of optical glass. The lower side is plane, and very finely matted, while the upper side is spherical and forms a magnifying lens. The upper surface, moreover, is carefully adjusted so that the focal length of the lens it forms is situated exactly on the plane lower side.

Thus, when the eye is placed over the finder hood of the camera, a very bright and considerably enlarged picture—4x6 cm. ($1\frac{5}{8} \times 2\frac{3}{8}$ ") in size—is seen. The image is bright right to the corners, and the focusing is enormously simplified by this patented device.

A second magnifier is also provided which again gives an image twice the normal size and shows the central portion of the picture only. The accuracy of focusing is greatly increased by this magnifier, and at this point is equivalent to focusing a picture $2\frac{1}{4} \times 3\frac{1}{4}$ inches in size on ground glass, in which case the circle of confusion need only be reckoned as 1/200th of an inch.

The lens is rapidly interchanged . . .
 . . . and is mounted in a strong bayonet joint to facilitate this operation. All the lenses fitted to the camera are of the highest optical quality.

Lenses of different apertures and a variety of different focal lengths can be used in the bayonet fitting, and may be changed without exposing or fogging the film in the camera at the time. For very close work, or for copying, a series of extension tubes of various lengths are used in conjunction with the normal lenses, and microscope work can also be undertaken by using the microscope attachment made specially for use with the Kine-Exakta.



The focal-plane shutter

. . . gives a wide range of exposure values, and is mechanically connected to the film winding gear so that double exposures cannot be made accidentally. The range of speeds is from 12 seconds to 1/1000th of a second, and a delayed-action mechanism is fitted for self-portrait work allowing 12 seconds to elapse after the release button has been pressed before automatically releasing the shutter for any exposure up to 6 seconds.

Although the mechanical coupling between shutter and film wind does away with accidental double exposures, it is quite simple to expose twice on one section of film where trick effects of this kind are required.

The Kine-Exakta is a true reflex camera . . with only one lens

It is the exceptionally satisfactory focusing system and the ease of composing the picture which brings the Kine-Exakta into such prominence among precision miniature cameras.

The instrument has **only one lens**—it is a true "reflex" camera. This lens which is an Anastigmat serves both to focus the picture and compose it on a small spring-actuated mirror which throws an image on the ground-glass in the finder hood. The very same lens takes the actual photograph on the film at the back of the camera.

Easier composing and focusing

. . . is the result of this system, for the image observed on the ground glass is identical, both in composition and focus to that which will subsequently be recorded on the film. Differences between the image on the ground glass and on the film cannot possibly arise.

The troubles of parallax, or the use of a restricted image in the view-finder, either or both of which must inevitably be found in the twin-lens type of instrument when exposures are made at short range, or with lenses of greater focal length than that of the finder, are entirely absent in the Kine-Exakta.



Negative size

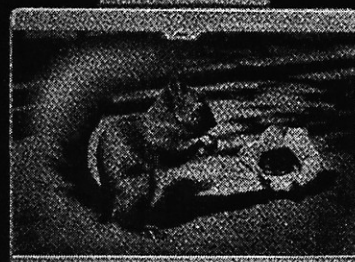


Image size in focusing hood

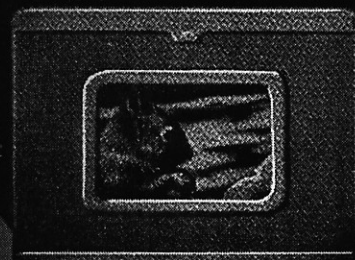
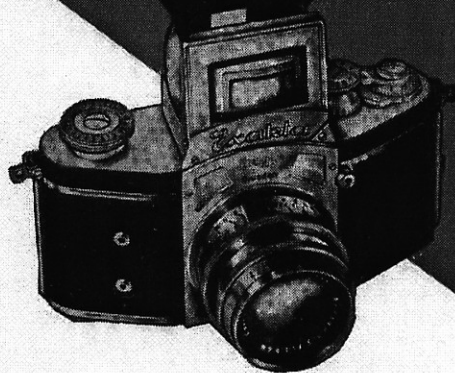
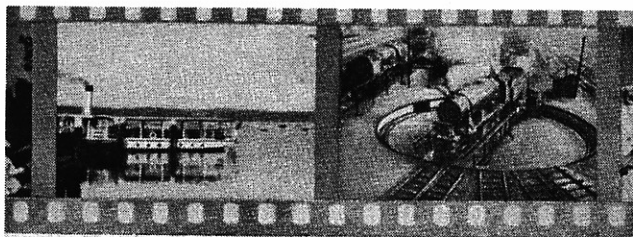


Image size
with magnifier



The practical method of ground glass focusing on the Kine Exakta is shown here. The image is seen on the ground glass magnified two times, while an auxiliary magnifier can be used to further amplify the magnification for extremely critical work.

[4]



PRICE LIST

Effective March 1st, 1939

Prices are subject to change without further notice

Specifications of the Kine-Exakta:

Die-cast light metal body—completely light-tight; folding finder hood opening by pressure on a button; frame finder; Built-in ground-glass screen and combined magnifier; second accessory magnifier for critical focusing; rewinding and film-cutting devices; mechanical interconnection between shutter and film wind; picture counter to 36 exposures. Focal-plane self-capping shutter, giving exposure between 12 seconds and 1/1000th second normally, and 6 seconds and 1/1000th second with delayed-action mechanism. Interchangeable lenses in bayonet fitting. Precision helical focusing from infinity to 3 feet. Automatic shutter lock, which only allows the shutter to be released when the finder hood is erect. Precision film channel in camera back. Tripod bush, leather neck sling, flexible cable release, and connection sockets for flash-bulb work included.

KINE-EXAKTA

- 8140-BR —With Exaktar F/3.5—5.4cm
(Angle 43° Front Diameter 32 mm).....\$120.00
- 8140-PR —With Primotar F/3.5—5.4cm
(Angle 43° Front Diameter 32mm)..... 130.00
- 8140-Q —With Zeiss Tessar F/3.5—5cm
(Angle 45° Front Diameter 32mm)..... 150.00
- 8140-E —With Zeiss Tessar F/2.8—5cm
(Angle 45° Front Diameter 32mm)..... 165.00

KINE-NIGHT EXAKTA

- 8140-PL —With Meyer Primoplan F/1.9—5.8 cm
(Angle 40° Front Diameter 42mm)..... 185.00
- 8140-O —With Schneider Xenon F/2—5cm
(Angle 45° Front Diameter 32mm)..... 185.00
- 8140-LR —With Zeiss Biotar F/2—5.8cm
(Angle 40° Front Diameter 42mm)..... 270.00

[5]

INTERCHANGEABLE EXTRA LENSES

These lenses fit the bayonet mount of the Kine-Exakta interchangeably with the standard lens, giving a greatly increased scope of usefulness to the camera.



No.	Lens	Speed F/	Focus cm.	Angle degrees	Price \$	Leather Case \$
7613	Meyer Wide Angle Anasit.	4.5	4.	55	80.00	2.00
7602	Meyer Primoplan	1.9	7.5	32	145.00	
7604	Meyer Trioplan	2.8	10.5	23	97.50	3.00
7605	Meyer Trioplan	4.5	12.	20	85.00	3.00
7609	Zeiss Tele Tessar	6.3	18.	14	170.00	3.00
7607	Meyer Tele Megor	5.5	15.	16	80.00	3.00
7608	Meyer Tele Megor	5.5	18.	14	100.00	3.00
7610	Meyer Tele Megor	5.5	25.	10	150.00	

Also available on special
import order only.

Zeiss Triotar	F/4	8.5cm.	\$100.00
Zeiss Sannar	F/2	8.5cm.	230.00
Zeiss Sonnar	F/4	13.5cm.	130.00
Zeiss Tele Tessar	F/8	30. cm.	300.00
Zeiss Telescop Lens	F/8	50. cm.	400.00

KINE-EXAKTA-LENS SHADES

A lens shade is essential when working against the light, but practically every outdoor shot will be of better quality if a shade is used regularly.

9654-B—32mm. for Exaktar, Primotar, Tessar F/3.5, Tessar F/2.8, or Xenon F/2. **2.00**

9656-K—42mm for Biotar F/2, or Primoplan F/1.9..... **3.00**

FILTERS

Yellow (Y) Red (R) Blue (B) Green (G)

(Yellow filters in each size are supplied in three grades, light, medium, and dark. When ordering state density desired, "l", "m", or "d".)

TABLE OF FILTER FACTORS

(Approximate values only. Factors will vary slightly with film used.)

Filter	Y.L.	Y.M.	Y.D.	Green	Blue	Red
Ortho.x	2	4	6	—	1 1/2	—
Panchro.x	1 1/2	2	3	4	1 1/2	8

9651-B—32mm. for Exaktar, Primotar, Tessar F/3.5, Tessar F/2.8 or Xenon F/2 **3.00**

9655-K—42mm. for Biotar F/2, or Primoplan F/1.9. **6.00**

KINE-EXAKTA-SUPPLEMENTARY LENSES

SUPPLEMENTARY LENSES FOR CLOSEUP

3641-B—32mm. for Exaktar, Primotar, Tessar F/3.5, Tessar F/2.8 or Xenon F/2 **3.00**

3643-K—42mm. for Biotar F/2. or Primoplan F/1.9..... **5.00**

SUPPLEMENTARY LENSES FOR DISTANT VIEWS

(When these supplementary lenses are used, a pair of Kine Lens Mount Adapters must be inserted between camera and lens barrel.)

K-8431-B—32mm. for Exaktar, Primotar, Tessar F/3.5, Tessar F/2.8 or Xenon F/2 **3.00**

K-8433-K—42mm. for Biotar F/2 or Primoplan F/1.9.... **5.00**

[8]

CHROMIUM PLATED KINE-EXAKTA LENS-MOUNT ADAPTERS AND EXTENSION TUBES

Photographing small objects at close range requires the use of Adapters and Extension tubes. These are placed between the camera and lens, thus permitting sharp focus to be secured at distances nearer than the lens alone is capable of focusing. Tube A, with adapters, increases the lens extension by 1.5 cm., while Tube B, with adapters, increases the extension by 3 cm. A pair of adapters is needed with either Tube A or Tube B, but Tube D, which includes the bayonets and adds 5 mm. to the extension, does not require the adapters. One pair of adapters will permit the use of a number of tubes for extremely close work. The following table shows the focusing distances with the various combinations of tubes and supplementary lenses, and in parentheses, the approximate size of the field included at that distance. The "Maximum" figures are based on the focusing of the lens at "Infinity," and the "Minimum" figures with it fully extended. *Focusing distances are from the name-plate of the camera.*

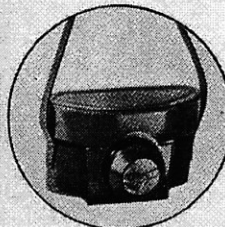
FOCUSING DISTANCES AND FIELD INCLUDED

	WITHOUT SUPPLEMENTARY		WITH SUPPLEMENTARY	
	Minimum	Maximum	Minimum	Maximum
Normal Lens	26 (11 3/4 x 17)	Inf.	11 (4 1/2 x 7)	20 (8 1/2 x 12 3/4)
With Tube D	14 (5 1/4 x 7 3/4)	24 (9 3/4 x 14 3/4)	9 1/4 (3 x 4 1/2)	11 1/2 (4 1/4 x 6)
With Adapters	11 (3 3/4 x 5 1/2)	15 (5 1/2 x 8 1/4)	8 (2 1/4 x 3 1/2)	9 1/2 (3 1/4 x 4 3/4)
With Adapters and A or D	9 (2 3/4 x 4)	11 (3 1/2 x 5 1/4)	7 (1 3/4 x 2 3/4)	7 3/4 (2 1/4 x 3 1/2)
With Adapters and B	6 1/2 (1 1/4 x 1 3/4)	8 3/4 (1 1/4 x 1 3/4)	6 (1 x 1 1/2)	6 (1 x 1 1/2)

Tube	A	B	D	Adapter Rings
Catalog Number	8845	8846	7600	8844
Price \$	4.00	4.00	9.00	6.50

The D Tube includes the bayonets and needs no adapters.

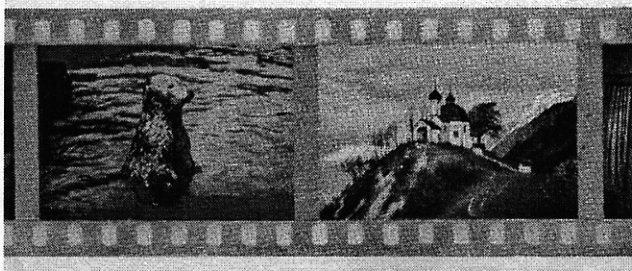
KINE-EXAKTA EVEREADY CARRYING CASE



This case provides complete protection to the camera while keeping it ready for instant use. Combination button with screw for holding camera in case and bushing to take universal tripod screw is supplied with case.

- KINE-7334** —For all Kine Exaktas except Night Exaktas **\$7.50**
- KINE-7334-LR** —For Night Kine Exaktas with Biotar F/2 or Primoplan F/1.9 **7.50**
- Screw Button for Eveready Case (for replacement)..... **.50**

[9]



MISCELLANEOUS ACCESSORIES

8855—NECK STRAP, pleated leather cord with carabines,
(for replacement)\$1.75

9662—FINGER RELEASE KNOB—Provides a larger pressure
area so that the Exakta may be operated even when
wearing heavy gloves\$.50

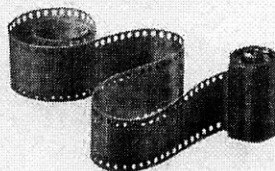
K-9657—LEATHER FOCUSING HOOD EXTENSION—
12 cm. extension fitted with large focusing magnifier.
To fit over the metal focusing hood to completely
block extraneous light.\$4.00

9663—Tripod-top with double swivel to permit using Exakta
at any angle on standard tripod.....\$2.50

TAKE-UP SPOOL—For replacement only. This spool is
supplied with each Kine Exakta under the winding
key\$.60

EXTRA LENS FLANGE—For Kine Exakta lenses.....\$2.50

BAKELITE KINE EXAKTA FILM CARTRIDGE



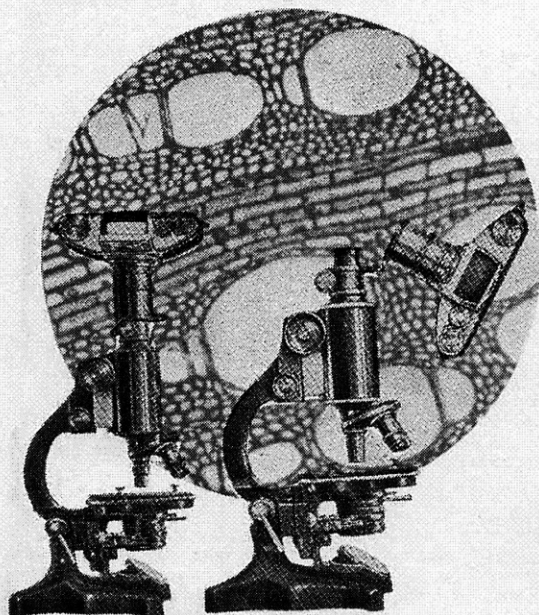
These Bakelite magazines are intended for loading strips of
bulk film in a dark room.\$1.20

PRACTICAL PHOTOGRAPHY WITH THE KINE EXAKTA

A new hand book on the Kine Exakta, by Gerhard Isert,
translated by Philip C. Smethurst.

In addition to a description of the special features and
technical equipment of the Kine Exakta, the author also gives
a very interesting dissertation on the techniques of photog-
raphy, pictorial points of view, developing, printing and
enlarging. Special instructions are included in the methods
of procedure involved in making transparency positives, flash
photography, photography with infra-red rays, color photog-
raphy, photomicrography and copying. Copiously illustrated
with photographs and diagrams.

Per Copy\$1.50



KINE EXAKTA MICROSCOPE ADAPTER

For Photomicrographs, the Kine Exakta is ideal
because of its reflex-mirror focusing which makes
it possible to focus upon and view the object
through the microscope.

The Kine Exakta Micro-Adapter serves as a conve-
nient connection between the camera and micro-
scope. The Exakta lens is simply removed, the Micro-
Adapter is inserted into the front of the camera
and attached to the eyepiece of the microscope.
The adapter is hinged so that the Kine Exakta
may be swung away from the microscope if eye-
pieces are to be changed or any adjustment should
be made. The image secured by means of micro-
scope objective and eyepiece is then photographed
by the Kine Exakta.

The Micro-Adapter fits all standard 25 mm. diameter
microscope draw-tubes and is supplied in a leather-
ette-covered wooden case.

8925-K—Kine Exakta Micro Adapter.....\$25.00

(Kine Exakta Micro Adapter for 33 mm. diameter draw-
tube supplied at same price. Unless otherwise stated,
25 mm. model will be supplied.)

EXAKTA REPRODUCTION STAND

The Exakta Reproduction Stand facilitates reproduction work. It ensures parallelism between camera and object. The baseboard also serves as an object stage for close-ups.

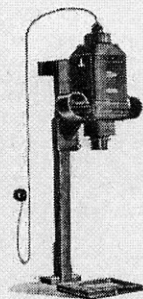
The Kine Exakta is attached by the tripod screw to an extension arm which holds the camera exactly above the center of the baseboard. It is raised or lowered by a friction drive.

The extension arm can also be raised to a vertical position if a greater distance is required. The object to be photographed is then placed vertically in a printing frame or against the wall.

For close-up work it will be necessary to use the Extension Tubes together with a pair of Kine Lens-Mount Adapters. For extreme close-up, a number of tubes may be employed. Natural size copies can be made with the use of one Extension Tube "B." Tube "D" will be found invaluable in connection with the Reproduction Stand, as it focuses sharply upon the base with the camera in the highest position on the pillar.

8810—Exakta Reproduction Stand 535.00

KINE-EXAKTA-LUMIMAX ENLARGERS



The Lumimax Enlargers are made of seasoned wood, leather-covered and white-enamelled inside. The lamphouse is raised or lowered to the desired position and locked by the large screw behind the post.

The focus is adjusted by turning the knurled ring on the helical mount to which the lens is attached. The Lumimax may be used either vertically or horizontally.

A single condenser is built into the lamphouse. It gives ample illumination when a 100 watt outside-coated lamp is used.

The Kine Exakta Lumimax "B" can also be supplied with a thread which takes the standard Leica lenses. For Contax lenses the Leica model can be used with an additional Contax adapter ring.

6040-B —Lumimax B, with condenser..... \$19.75
6040-L —Lumimax B with mount for Stand. Leica lens 19.75
—Adapter fitting 6040-L to take Contax lenses 7.00
W-5202-G—Wooden Stand 4.00
M-5202-G—Metal Stand 7.50
6500 —Baseboard 15x16½" 3.25

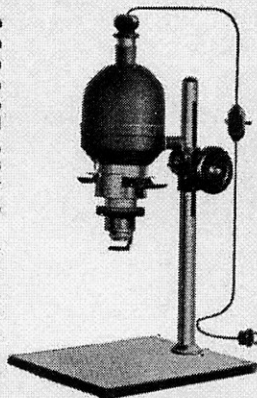
COMPLETE KINE EXAKTA LUMIMAX B

6040-B/a—With Wooden Stand 27.00
6040-B/b—With Metal Stand 30.50

KINE-EXAKTA-PROJECTION LUMIMAX

The Projection Lumimax has a metal lamphouse moving on a metal post by means of a handwheel. Focusing is by a large wooden disc. Turned into the horizontal position, and using the lamphouse extension, the Projection Lumimax throws an image 3 x 4 feet at about 4 feet distance with the 5cm. lens.

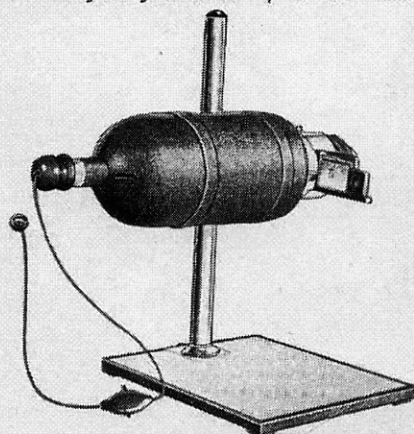
For enlarging use a 100 watt opal lamp and for projection a 100 watt clear projection bulb. The double condenser system gives light of ample brilliance with these lamps. The baseboard is of hard wood 13 x 15 inches.



KINE-9700 —Without lens, but with mount for Kine-Exakta lens \$60.00
KINE-9700-L —Without lens, but with mount for Leica lens 60.00
—Adapter for Kine 9700-L to take Contax lenses 7.00
KINE-9700-PR—with Primotar F/3.5 80.00
KINE-9700-M —with Ihagee Anastigmat F/4.5 70.00
KINE-9700-P —with Ihagee Anastigmat F/3.5 77.50

ACCESSORIES FOR KINE-PROJ. LUMIMAX

Lamphouse extension for even screen illumination..... \$4.50
Extra glass masks, 24x36 mm., 3x4 cm., in wooden containers, each 1.80
9736—Sliding lantern slide carrier, when using enlarger as a lantern slide projector, 4.5x6 cm. and 5x5 cm., each 1.70
9735—Glass pressure frame for single films..... 1.50
Extension tube for reducing 6x6 negatives to 5x5 cm. lantern slides, applied between enlarger and lens..... 6.00
5568—Universal paper holder for the enlarger. Book-form with sliding marginal masks. Up to 8x10" 7.00





KINE EXAKTA, for 35 mm. film
V. P. EXAKTA, for 4x6.5 cm. film
KINE-EXAKTA ACCESSORIES and
KINE-EXAKTA ENLARGERS

Manufactured by
IHAGEE KAMERAWERK, DRESDEN

●
Exclusive U. S. A. Importers
and

Eastern Distribution

PHOTO MARKETING CORP.
10 West 33rd Street, New York, N. Y.

●
Western Distribution

BELL & HOWELL CO.

Arizona, California, Colorado, Idaho, Montana, New Mexico,
Nevada, Oregon, Utah, Washington, Wyoming

716 North La Brea Ave., Los Angeles, Calif.

Kansas, Nebraska, North Dakota, Oklahoma and South Dakota

1801 Larchmont Ave., Chicago, Ill.

●
SOLD BY:

B. L. SHARP
LITITZ, PA.
Cameras and Photographic Supplies