

SOME OF THE FEATURES OF THE EXAKTA 66

- **SINGLE LENS REFLEX PHOTOGRAPHY** — The Exakta 66 gives you ground glass focusing — the most accurate focusing method known to photographers. This permits you to compose your picture on the ground glass. You see the effect of all changes in composition, focusing, and aperture up to the instant of pressing the shutter release. You get the exact image on film that you see on the ground glass. There is no parallax problem because only one lens is used for both view-finding and taking the picture.
- **PRESET DIAPHRAGM LENSES** — The Exakta 66 offers you the finest factory coated lenses with preset diaphragm control for faster, smoother operation. This enables you to preselect your aperture and open your lens fully to get maximum light for viewing and focusing. Then with a flick of the finger, the lens is automatically reset to the aperture you had pre-selected.
- **INTERCHANGEABLE LENSES** — The 66 permits you to interchange lenses with the greatest of ease. Tele-photo, Wide Angle and High-Speed lenses can be added quickly and easily. Every time you change a lens, you create a new camera. No special viewfinders are needed as you always view through the picture-taking lens.
- **AUTOMATIC FILM TRANSPORT AND SHUTTER COCKING** — One turn of the film winding dial transports the film for the next exposure, cocks the shutter and moves the film exposure counter simultaneously. This saves the photographer considerable time, and makes it possible to take a series of shots rapidly.
- **FOCAL PLANE SHUTTER** — The focal plane shutter of the Exakta 66 is capable of mastering any task. It is the most accurate type of shutter devised, assuring you of accurate exposures at all speeds. The shutter has two curtains that operate with a variable slit, which determines the exposure.
- **29 SHUTTER SPEED SETTINGS** — The Exakta 66 has an unsurpassed range of shutter speed settings — from 1/1000 of a second to 12 seconds. Exposures can be made at 1/1000, 1/500, 1/250, 1/150, 1/100, 1/50, 1/25, 1/10 and 1/2 of a second, 1, 2, 3, 4, 5, 6, 7, 8, 9, 10 and 12 seconds plus bulb and time.
- **DELAYED, SELF-RELEASE ACTION** — The Exakta 66 has a built-in self-timer that releases the shutter after a 13-second interval. With the aid of the self-timing mechanism, the photographer can include himself in a picture and avoid the camera shake that may occur when photographs are taken at slow exposures. It works with fast and slow speeds.
- **DOUBLE EXPOSURE PREVENTION, INTENTIONAL DOUBLE EXPOSURES POSSIBLE** — The Exakta 66 has an automatic shutter lock which prevents double exposures. This lock also closes automatically after all 12 pictures have been taken. Intentional double exposures for trick shots, however, are possible.
- **INTERNAL FLASH SYNCHRONIZATION** — The Exakta 66 has a built-in, single contact which is used for both regular and electronic flash — with an adjustable scale which permits the time delay to be altered within the 0-20 millisecond range. The camera is synchronized for flash on all speeds with flashbulbs, and at 1/25 and 1/50 of a second with speedlights and stroboscopic lights. Flash pictures in black-and-white and color can be taken with both types of lighting without any difficulty.
- **INTERCHANGEABLE GROUND GLASSES** — Special ground and clear focusing glasses for scientific work, close-up and microscope photography are available for the Exakta 66. Ground glasses with a clear center spot and clear glass, both with etched-in bisected hair-line cross, may also be obtained.
- **WAIST-LEVEL VIEWFINDER AND EYE-LEVEL SPORTS FINDER** — The viewfinder of the 66 opens automatically, for waist-level focusing. It includes a powerful magnifier for critical work. The viewfinder quickly converts to an eye-level sports finder.
- **DEPTH-OF-FIELD, APERTURE AND DISTANCE SCALES** — Each lens furnished with the Exakta 66 contains engraved scales on which you can read at a glance the information essential for topnotch photography. The various scales tell you the opening of the lens diaphragm (f stop), the distance on which your camera is focused and the area of sharpness.
- **120 BLACK-AND-WHITE AND COLOR FILM** — The Exakta 66 uses both standard black-and-white and color film in No. 120 rollfilm size. You get 12 exposures to the roll, 2 1/4 x 2 1/4 inches in size (6 x 6-cm.), which makes it very economical to use as your cost is but a few cents per picture. Because of this, you can take more pictures.
- **EASY LOADING, REMOVABLE BACK** — A remarkable feature of the Exakta 66 is the removable back, making it possible to insert film safely and rapidly with both hands. The camera back can be locked into position with a swinging lever.
- **PHOTOMICROGRAPHY, MACROPHOTOGRAPHY** — The Exakta 66 offers the advantages of close-up photography with the use of Novoflex bellows or Extension tubes. Photomicrography also becomes a simple matter with the 66 with the use of an inexpensive microscope adapter.
- **FILM NOTE DEVICE** — The Exakta 66 has an ingenious built-in film note device or writing tablet on which the photographer can keep a written record of the kind of film (black-and-white or color) he is using and the speed rating. After the film is removed from the camera, the photographer can remove the writing by turning the mechanical eraser.
- **NEW, MECHANICAL FILM POINTER** — The Exakta 66 has a unique mechanical needle-pointer which tells you at a glance when film is loaded in the camera. This provides you with visual evidence at all times that the camera is ready for action — and prevents memory mistakes.
- **COMPACT, RIGID** — The Exakta 66 is easy to carry and operate. The camera is compact and is designed to handle well. The body is almost square in shape, measuring 5 1/2 inches high, 4 1/2 inches wide and 4 1/2 inches deep (without lens).

PRINTED IN THE U.S.A.



Exclusive factory appointed representatives for sales and service in the U.S.A.

EXAKTA CAMERA COMPANY

705 Bronx River Road • Bronxville 8, N. Y.

Presenting the New...



Exakta

66

SPECIAL NOTICE TO PHOTOGRAPHERS!



We are proud to introduce the eagerly-awaited, new $2\frac{1}{4}$ X $2\frac{1}{4}$ -inch (6 X 6-cm) Exakta 66. It is unnecessary to tell Exakta owners what the advantages of such a camera are and how important the new Exakta will be to photographers all over the world. Ihagee has spent many years designing and perfecting this great addition to the single-lens reflex line, and reports from Europe about the camera already have stirred up a bee-hive of interest and enthusiasm.

The Exakta 66 with the redesigned 80-mm., f/2.8 Zeiss Jena Tessar lens with built-in preset diaphragm mechanism is priced at.....\$319.50

The "66" takes 12 pictures, $2\frac{1}{4}$ X $2\frac{1}{4}$ inches in size, on 120 rollfilm. The shape and design are radically different from the experimental model of this camera, which was available prior to World War II.

The body is now roughly square in shape, measuring $5\frac{1}{2}$ inches high, $4\frac{1}{2}$ inches wide and $4\frac{1}{2}$ inches deep (without lens). All important operating mechanisms are located on the right side.

The two-curtain cloth shutter and two speed setting knobs are similar to those of the 35-mm. Exakta models. The two knobs also are similar to those of the miniature Exakta and provide 29 speed settings ranging from 1/1000 of a second to 12 seconds for instantaneous release. Delayed action exposures can be made up to a speed of 6 seconds.

The new Exakta has an automatic film-transport, shutter-cocking mechanism that operates from the first frame. An ingenious indicator on the camera back indicates that the first frame has been reached. The film-transport mechanism locks until the exposure has been made. Then the film can be advanced only enough to bring the next frame into position. The combination ratchet-type film-transport winder is given a half-turn to advance the film and frame counter and to cock the shutter. Intentional double exposures are possible.

The shutter release is on the right side of the camera on the front of the body next to the lens. It has a safety lock on it.



The interchangeable 80-mm. Tessar, in addition to the preset diaphragm mechanism, has distance scales in both feet and meters. Additional lenses will be available ranging in focal length from 56 to 400 mm. Several wide-angles, f/3.5 Primotars of 85, 165 and 180 mm. and f/5.5 Meyer Tele-Megors of 150, 180, 250 and 400 mm. will be available. The back of the camera is removable and can be locked with a swinging lever. Interchangeable backs will be available in the future. An indentation in the back affords a fingerhold for grasping and steadying the camera. A table support on the camera base can be used for steadying the camera or balancing it when it is placed on a flat surface. Built-in flash synchronization is provided by means of a single socket on the left, top side of the camera. The same socket is used for both regular and electronic flash and an adjustable scale permits the time delay to be altered within the 0-20 millisecond range.

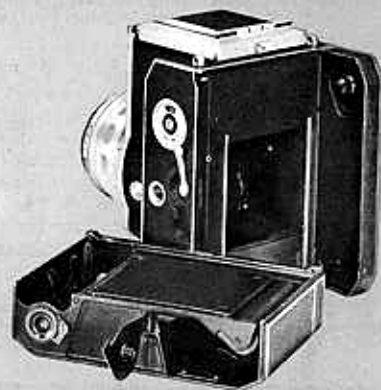
The folding viewfinder is removable for interchange with other viewfinders which will be available. The camera will come with the standard viewfinder which can be used at waist level or, if the front window is opened, as an eye-level, sports finder.

The standard viewfinder includes a hinged magnifier equipped with an eyepiece for focusing comfort. The magnifier covers the entire ground glass area. The ground glass is a condenser type element with a finely ground base for brighter illumination.

Other features include a film notes device, loops for neckstraps, tripod sockets on both the bottom and side of the camera and an eveready case.

GUARANTEE

Every Exakta 66 is furnished with a one-year guarantee from the Exakta Camera Company, exclusive representative of Ihagee Camera Works in the U.S.A. An owner registration card, import certificate and instruction book are included with every camera. The Guarantee Certificate insures your camera for one year against any defects in material and workmanship... the owner's registration card gives protection in event of loss or theft and entitles you to free information and technical services... the import certificate provides for the duty-free re-entry of your Exakta Camera when traveling abroad.



ASK YOUR DEALER TO SHOW THIS CAMERA TO YOU