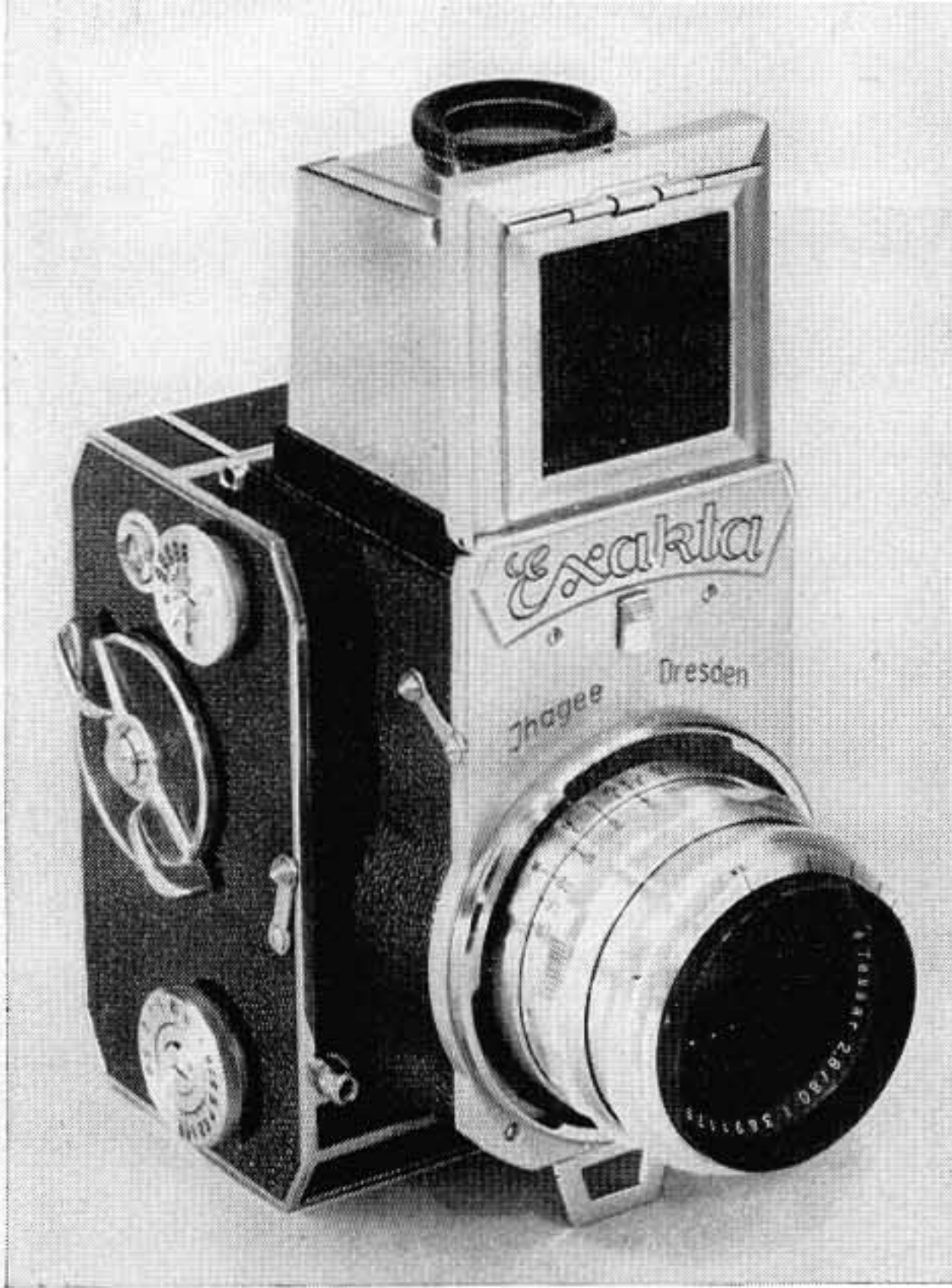
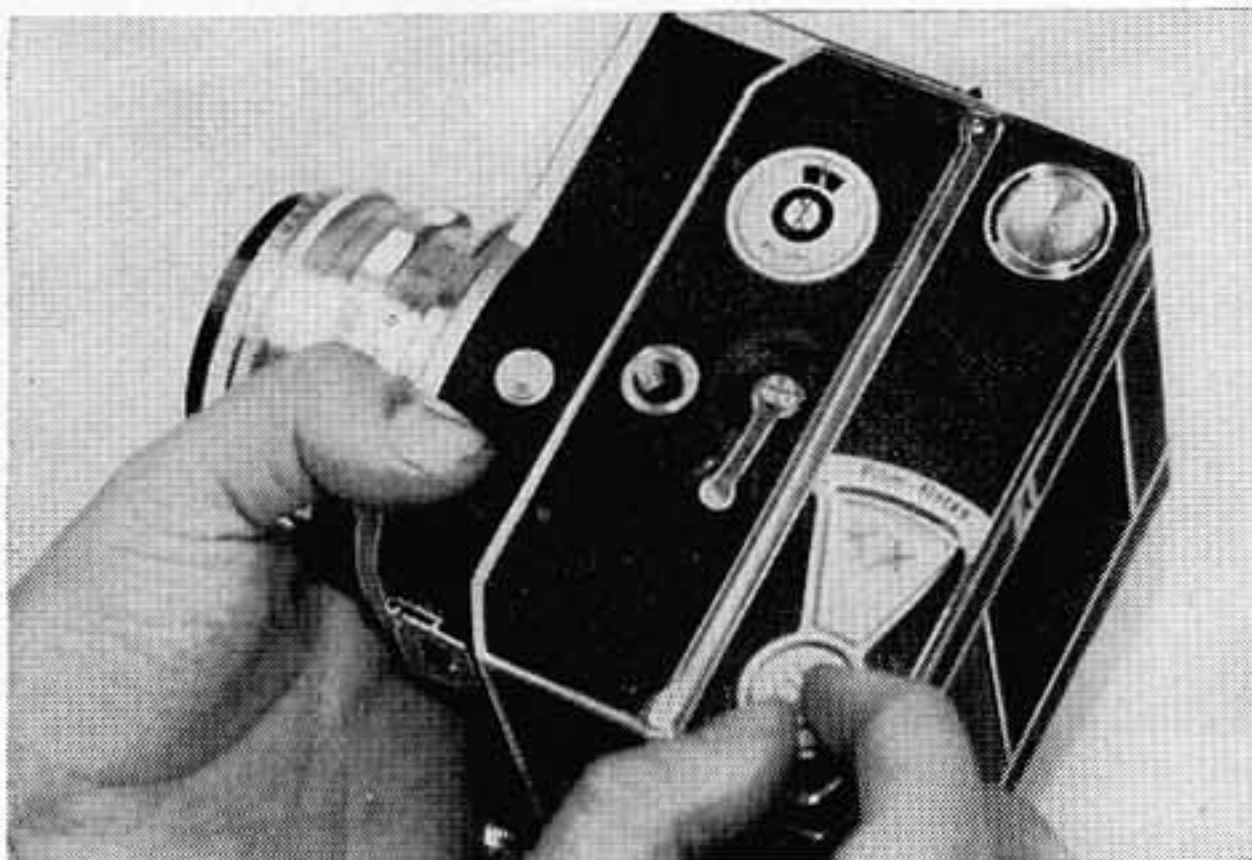


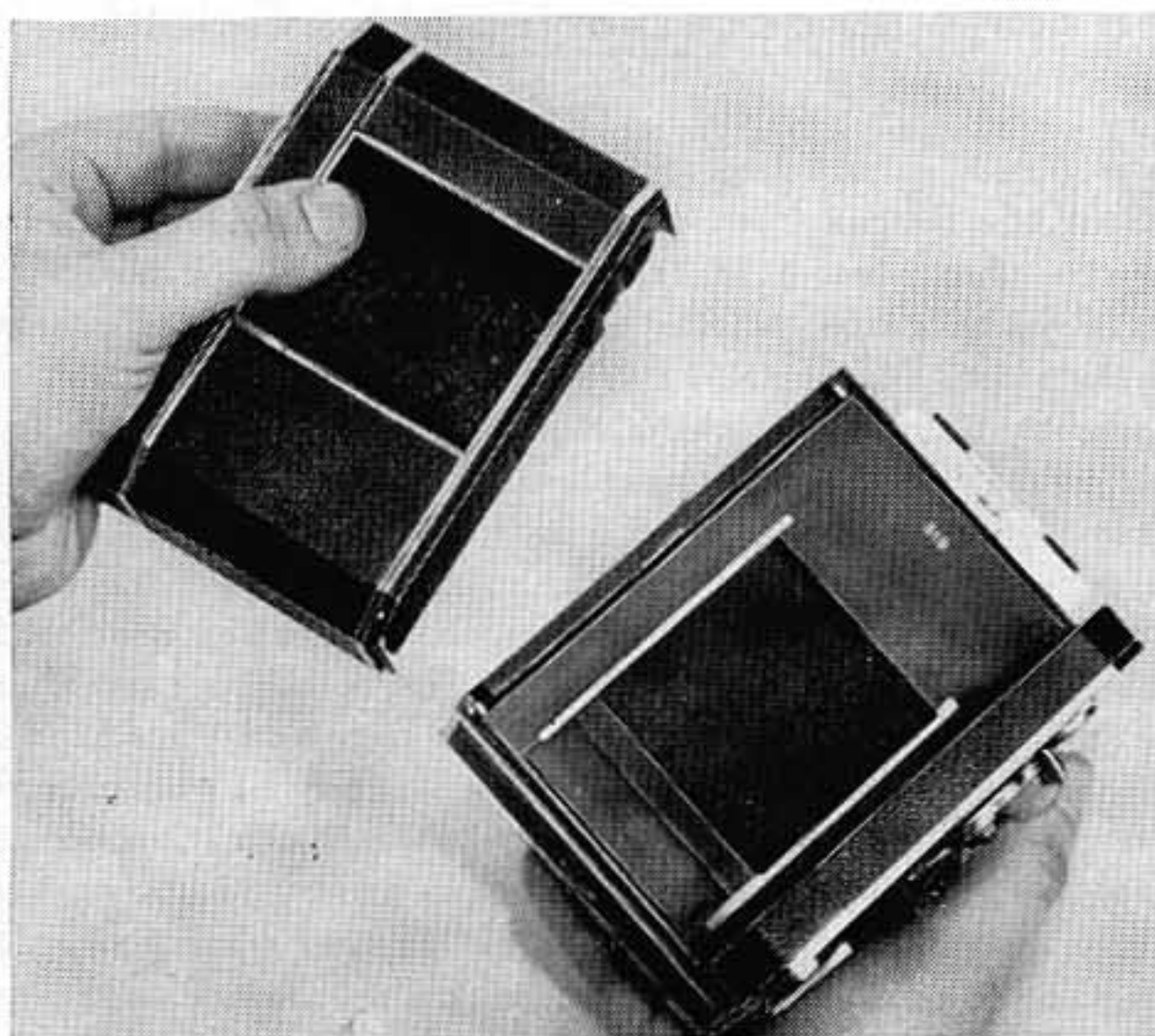
# MODERN REPORTS ON THE EXAKTA 66



Although the Exakta appears large, it's easy to use at waist level. An indentation in back forms finger grip.



Controls are sturdy. Tripod sockets, side and bottom, allow camera to be loaded without removal from tripod.



Back can be slipped from Exakta 66 with turn of a single lever. Film is then loaded into the removable back.

THE EXAKTA 66, a  $2\frac{1}{4} \times 2\frac{1}{4}$  single lens reflex of unusual design and versatility, will be available shortly at a list price of about \$300. The lens is an 80mm f/2.8 Carl Zeiss (Jena) Tessar with preset diaphragm, built-in sunshade and bayonet lens mount. The focal plane shutter has speeds of from 1/1000 to 12 sec. plus Time and Bulb; also delayed action. The waist-level reflex finder is removable and an eye-level Pentaprism finder will be available in the future.

MODERN examined one of the first production Exakta 66 cameras although there wasn't enough time to run any conclusive film tests with it. At first glance the camera appears rather large. But it's easy to operate at waist level and fits into your hands nicely.

At the touch of a button at the rear of the camera, the focusing hood springs into position. The ground glass is a condensing type lens, ground finely on the under side. Illumination is equally brilliant to the corners. A large magnifying glass in the hood covers the entire ground glass and is mounted in a mask. When the two side panels of the hood are pressed together slightly, the mask forms a light-tight viewing box over the ground glass as shown in the top photo. There is also provision for direct viewing through windows in the rear and front hood panels.

The single lens reflex has one major advantage over twin-lens reflexes. Unlike the twin-lens design, single-lens instruments have no parallax error, since viewing is done directly through the taking lens. This may cause one difficulty if focusing is done with the lens wide open for maximum brilliance. Some time may be lost between focusing and taking the picture while the lens is stopped down to the proper aperture. The Exakta 66 preset diaphragm shortens this delay considerably. You can focus wide open. Then a flick of a finger, just before snapping the shutter, will instantly close the lens down to any predetermined stop.

Speed settings are located on two dials as on the 35mm Exakta VX. One dial contains the slow speeds and delayed action mechanism while the other controls the fast speeds. These can be seen on the left side of the camera (*top photo*) on either side of the large combination film advance and shutter winding wheel. This wheel has finger grips. A short turn advances the film and winds the shutter. It then snaps back to its normal position. The shutter release is located at the lower right front of the Exakta 66.

The left side of the camera body (*middle photo*) contains the bayonet lens mount release button (near left thumb), a tripod socket, a round wheel and indicator window for changing flash (*Continued on page 114*)

# Models Prefer \*Mamiya Too!



America's most photographed women, like vivacious Cheri Kirk, and outstanding photographers, like Dave Hecht, get behind a Mamiya camera for their most personal, precious photography. Their precision simplicity is a result of superior materials and outstanding workmanship. *\*You, too, will want to get behind a Mamiya for the ultimate in photographic perfection.*



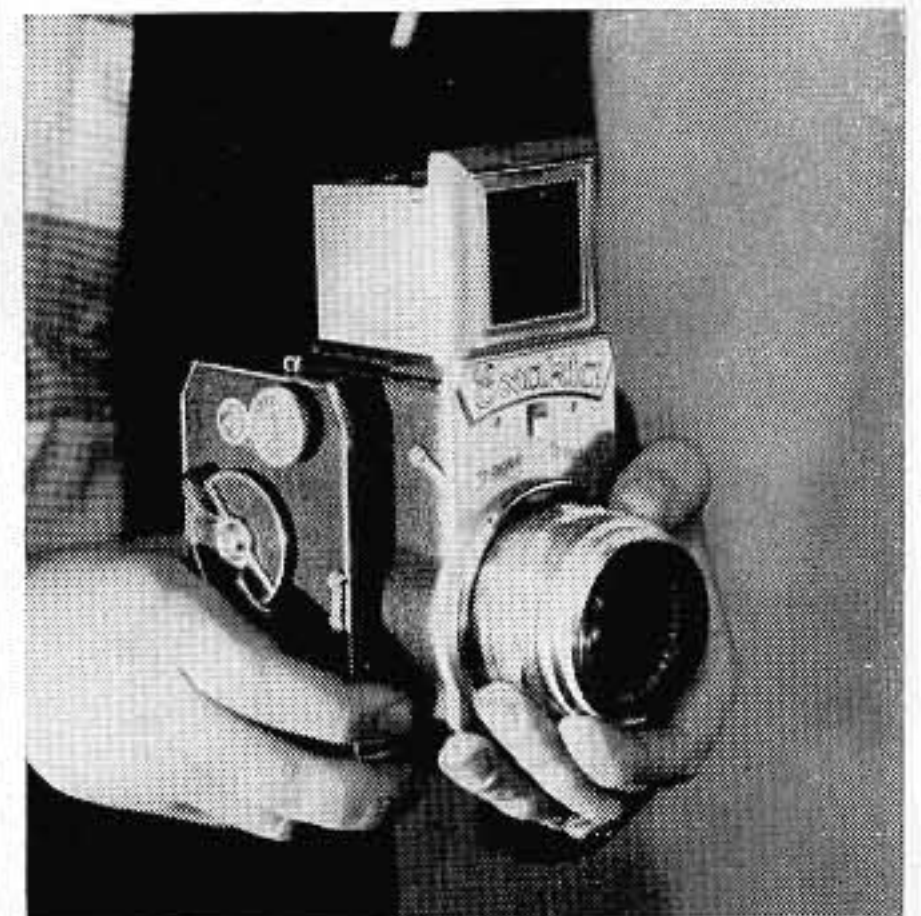
### The MAMIYAFLEX MODEL II

offers many features found only in higher priced cameras. All controls are manipulated for maximum ease of operation. Eye level direct viewfinder... viewing and picture lenses are coupled for needle-sharp focusing.

**\$99.95**

(with leather eveready case)

- Fully corrected 75mm f3.5 Sekor lens with matching viewing lens.
- Flash synchronized shutter, 9 speeds 1 to 1/300 & Bulb.
- Built-in delayed action.
- Extra magnifier for critical focusing.
- Automatic winding, frame counting, shutter cocking and double-exposure prevention.
- Takes 12 2¼ x 2¼ exposures on 120 roll film.

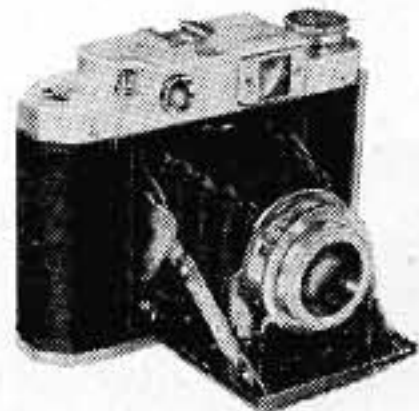


This method of handling Exakta 66 gave firm, steady support. Left hand controls preset diaphragm, focusing.

The Exakta 66 mirror, which springs out of the way just before the exposure, is of a unique design. It is made in two parts. While one part swings upward, a smaller part twists forward. The two mirrors reportedly reduce the hazard of vignetting with lenses of over 400mm focal length. Lenses from 55mm upward are to be available for the Exakta 66. These, plus the eventual eye-level Pentaprism should make the Exakta 66 an exceedingly useful camera for portraiture, sports, fashion and any other field where a photographer needs a versatile 2¼ x 2¼ camera with a variety of lenses.—H. K.



**Mamiyaflex Automatic**  
(with leather eveready case)  
**\$179.95**



**Mamiya 6**  
(with leather eveready case)  
**\$99.95**



**Mamiya Super-16**  
(with leather case & flashgun)  
**\$39.95**

AT BETTER DEALERS EVERYWHERE

(Prices slightly higher in Canada)

Write for free booklet MP-312

**Mamiya Camera** company of america, inc. 82 wall street, new york 5, n. y.

