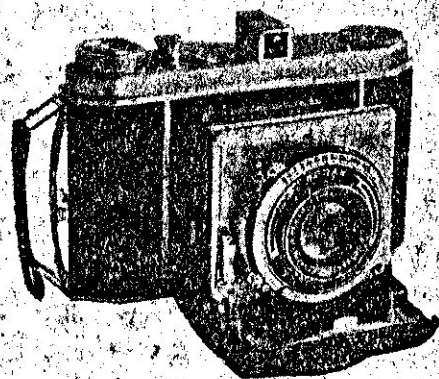


Announcing !

The New Kodak "SUPREMA"



A new Kodak Camera for 12 square size pictures of $2\frac{1}{4} \times 2\frac{1}{4}$. Equipped with Schneider Xenar F.3.5 lens and Rapid Compur Shutter, giving a wide range of speeds upto 1/400 of a second. The camera is focussed by a precision made focussing mount, has body release and an automatic film spacing mechanism which operates after the first number winds on and eliminates any

necessity to watch the film window when winding on to subsequent exposures. It is also equipped with double exposure prevention device, one finger closing of bed and telescopic type direct vision view finder. All metal parts are finished in dull chromium and the body is covered with real leather.

Price, complete with Ever Ready Leather Case ... Rs. 236/-

Can now be inspected at :

THE CAMERA EXCHANGE

Printed in Calcutta at Navana's.

AUTUMN 1938

Photographic Catalogue

THE CAMERA EXCHANGE

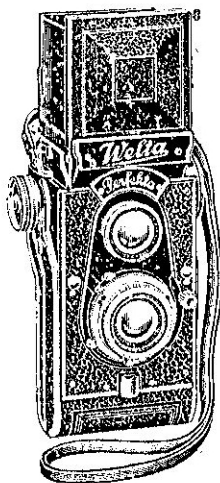
17-2A CHOWRINGHEE ROAD

(GRAND HOTEL ARCADE)

CALCUTTA.

PHONE CAL 4227

THIS ANNULS ALL PREVIOUS ISSUES



WELTA "PERFEKTA" CAMERAS

For pictures $2\frac{1}{4}" \times 2\frac{1}{4}"$.

A folding type square size reflex camera of precision built. Takes any make of No. 120 size roll film for 12 pictures.

Prices :—

	Rs.	As.
Perfekta Fitted with :—		
Mayer Trioplan F.3.5. lens & Compur Shutter	165	0
Ditto with Rapid Compur Shutter	180	0
Zeiss Tessar F.3.8 lens & Compur Shutter	230	0
Ditto with Rapid Compur Shutter	246	0
Ever Ready leather case	22	4
Portrait lens, per pair	27	8

WELTA "SUPERFEKTA" CAMERAS,

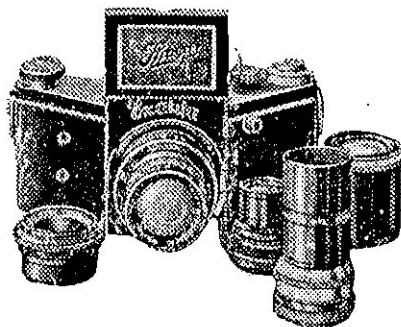
For pictures $3\frac{1}{4}" \times 2\frac{1}{4}"$

SUPERFEKTA—a twin lens mirror reflex camera which either takes upright or oblong pictures, it is something sensational; you press a button and the Superfekta is ready for taking upright pictures and half turn the rear of the camera, and it is ready for horizontal pictures, beautifully finished.

Prices :—

Superfekta Fitted with :—	Rs.	As.
Mayer Trioplan F.3.8 lens & Compur OS Shutter	260	0
Ditto with Rapid Compur Shutter	275	0
Zeiss Tessar F.3.8 lens Compur OS Shutter	325	0
Ditto with Rapid Compur Shutter	340	0
1 set of Portrait lenses	23	0
Ever Ready leather case	25	8

Satisfied customers—our greatest asset.



IHAGEE "EXAKTA" CAMERAS.

The Multi Speed Reflex Camera.

This well renowned reflex camera takes the standard Vest Pocket ($1\frac{1}{8}" \times 2\frac{1}{2}"$) film for 8 exposures. It is completely free from parallax and is fitted with a first class Focal Plane shutter

giving a wide range of speeds, right from 12 second to a 1/1000 of a second, the built in delayed action release enables one to include himself in the picture. Various high precision interchangeable lenses are available.

Prices :—

Exakta with :—	Rs.	As.
Ihagee Exakta F.3.5 lens, f.7.5	225	0
Zeiss Tessar F.3.5 lens, f.7.5 cm.	286	0
Zeiss Tessar F.2.8 lens, f.7.5 cm.	330	0
Schneider Xenon F.2 lens, f.8 cm.	488	0
Mayer Primoplan F.2 lens, f.8 cm.	488	0

Extra Rs. 15/- is charged for Cameras in Matt Chromium finished.

Accessories for Exakta.

Tele-Tessar F.6.3 lens, f.12 cm	195	0
Tele-Megor, F.5.5 lens, f.15 cm.	143	0
Ihagee Anastigmat F.4.5 lens, f.11 cm.	60	0
Wide Angle Tessar F.8 lens, f.5.5 cm.	138	0
Attachable yellow screens, upto 32 mm.	6	0
Attachable yellow screens, upto 38 mm.	7	8
Attachable yellow screens, upto 51 mm.	15	0
Leather extension hood, in case with magnifier	9	0
Lens hoods from	Rs. 5-0-0 to	6 14
Ever Ready leather case for lenses upto F.2.8	18	0
Ditto, do for F.2 and F.1.9 lenses	20	0

Prices of other accessories on application.

Best value offered in part exchange.

Accessories for Contax Cameras—(contd.)**STIFF EVER READY LEATHER CASES.**

	Rs.	As.
For Contax I with Sonnar lenses in rigid mount	24	12
Ditto, for Contax II	31	8
For Contax III with Tessar F.3.5, F.2.8 or F.2 Sonnar lenses in sunk mount	29	4
Ditto, for Sonnar lenses in rigid mount	33	12

TRIPOD & OTHER USEFUL ACCESSORIES.

Chain and Table tripod	11	4
Three section wooden tripod. Open 56", closed 23"	33	12
Ditto, open 65", closed 26"	45	0
Metal Tripod for panorama exposures	112	8
Tilting Tripod head	13	4

SFLAH SYNCHRONISER & BULBS.

For Contax I, II & III. (State for which model required)	14	4
Extension piece for flash bulb synchroniser	10	8
Adapter for synchroniser to take flash bulbs, with large diameter screws	0	3
Phillips Photophlux lamps each	1	6
Ditto, per doz	15	0
Extra Battery	0	8

NEGATIVE STORAGE BULBS.

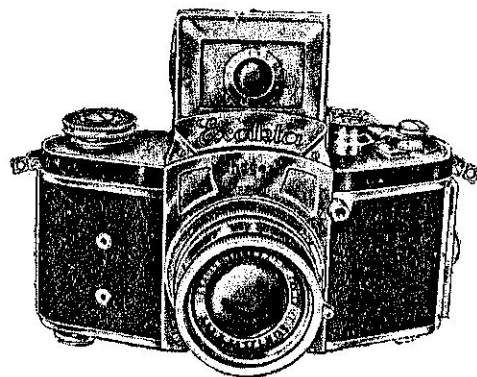
For 25 complete films	4	8
For 50 complete films	7	3
For 1 complete film	0	1
Ditto., per dozen	0	8

Full particulars and prices of other Contax accessories on application.

Consult us—it costs you nothing.

IHAGEE "KINE EXAKTA" CAMERAS.

For 24 × 36 mm. (1" × 1½") pictures.



The new Exakta is a precision miniature camera of remarkable quality, the most important of which is that it takes 35 mm. perforated cine films for 96 exposures, and if desired the exposed films can be cut off and taken out of the camera by means of its

built in knife, needless to say—without injuring or taking the still unexposed films. Lenses of different focal lengths and apertures in bayonet fitting are available which can be instantly changed without exposing or fogging the film in the camera at the time.

The focal plane shutter gives a wide range of speeds, from 12 seconds to 1/1000 part of a second, the shutter is mechanically connected with the winding screw so that double exposures can not be made accidentally. The self timer fitted in the camera enables one to take himself his own picture.

(continued to the next page)

Exchange it with an Exakta.

Ihagee "Kine Exakta" Cameras—(contd.)

The camera has only one lens—it is a true reflex camera,—for a small spring mirror throws an image on the ground glass in the mirror hood, as well as to take the actual photograph on the film at the back of the

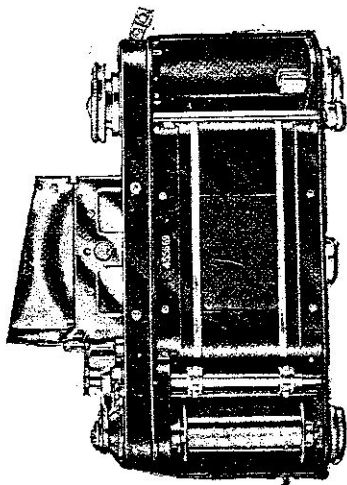


Illustration shows the rear part of the Kine Exakta camera. The accuracy and convenience of this system places the single lens reflex far above all others.

Prices:—

Kine Exakta fitted with:	Rs.	As.
With F.3.5 Exaktar lens f.l. 5 cm.	300	0
With F.3.5 Primosar lens f.l. 5 cm.	330	0
With F.3.5 Xenar lens f.l. 5 cm.	330	0
With F.3.5 Tessar lens f.l. 5 cm.	390	0
With F.2.8 Xenar lens f.l. 5 cm.	384	0
With F.2.8 Tessar lens f.l. 5 cm.	448	0
With F.2 Xenon lens f.l. 5 cm.	545	0
With F.2 Zeiss Biotar lens f.l. 5.8 cm.	595	0
With F.1.9 Mayer Primoplan lens f.l. 5 cm.	545	0
Special interchangeable lenses for Kine Exakta:—		
Tessar F.4.5; 12 cm. focal length	204	0
Tele Tessar F.6.3; 18 cm. focal length	396	0
Tele Megor F.5.5; 15 cm. focal length	180	0
Tele Megor F.5.5; 18 cm. focal length	225	0
Tele Megor F.5.5; 25 cm. focal length	330	0
Ever-Ready carrying case	18	0
Luminax projector-enlarger without lens, taking lens of Exakta Camera	128	0
Stand for Luminax	10	8

(continued to the next page)

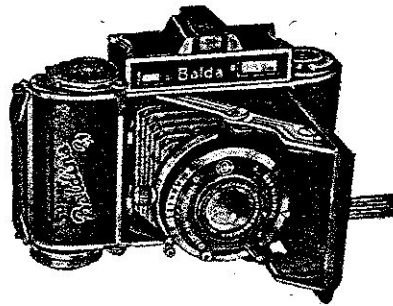
Know the secret—best result depends on Hauff films.

Ihagee "Kine Exakta" Cameras—(contd.)

Microscope attachment	68	0
Extension tubes, chromium finish, each (A or B)	8	4
Pair of distance rings (necessary to fix the tubes into the bayonet fitting and on to the lens)	12	12
Reproduction of copying stand	75	0
Lens hood (up to 38 mm. diameter)	5	4
Lens hood (up to 51 mm. diameter)	7	8
Shutter release button	1	8
Finder hood extension with magnifier	9	0
Ball and socket tripod head	6	0
Exakta filter (yellow, green, blue or red) for lenses up to 32 mm. diameter	6	0
Exakta filter (yellow, green, blue or red) for lenses up to 38 mm. diameter	7	8
Exakta filter (yellow, green, blue or red) for lenses up to 51 mm. diameter	15	0
Supplementary lens for close work for lenses up to 32 mm. diameter	4	8
Supplementary lens for close work for lenses up to 58 mm. diameter	6	0
Supplementary lens for close work for lenses up to 51 mm. diameter	9	0

BALDA SUPER BALDINA.

THE SUPER BALDINA—a de-luxe miniature camera fitted with a range finder coupled with the lens focussing mechanism and operated from the focussing knob above the shutter. The large and bright eye piece of the finder facilitates quick and easy focussing even at unfavourable condition of light. The view finder of the Super Baldina is connected with the focussing mechanism and is equipped with auto-

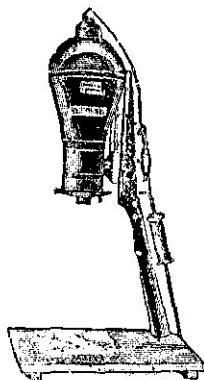


(continued to the next page.)

It pays to pay us a visit.

ZEISS IKON MIRAPHOT ENLARGERS.

Miraphots the automatic focussing enlargers are made in three different sizes, any smaller size negative than those mentioned can be used, and the degree of enlargement will be in proportion. Each Miraphot is sold complete with special Miraphot lamp, short length of flex with plug for wall socket, and one fit over stop.



Prices :—

	Rs.	As.
Baby Miraphot for negatives, 3 × 4 cm. with Anastigmat lens	149	0
Miraphot for 3½" × 2½" negatives, with Novar F.6.3 lens	126	0
Ditto, with Zeiss Tessar F.4.5 lens	160	0
Miraphot for 9 × 12 cm. negatives with Novar F.6.3 lens	170	0
Ditto, with Zeiss Tessar F.4.5 lens	218	0
Miraphot gasfilled lamps, for any of the above machines	6	8



KODAK AUTO FOCUS ENLARGER, MODEL B.

The Kodak Auto Focus Enlarger can be clamped to any ordinary table. It makes enlarging almost as easy as printing. No focussing is necessary, as you move the enlarger up and down, the size of the image changes, but the focus remains sharp.

The largest possible size of enlargement is 21" × 14". Enlargements of from 1½ to 3½ diameter can be made from negatives of any size upto and including 6" × 4".

(prices in the next page)

Ask for a copy of our Movie Catalogue.

Kodak Auto Focus Enlarger—(contd.)

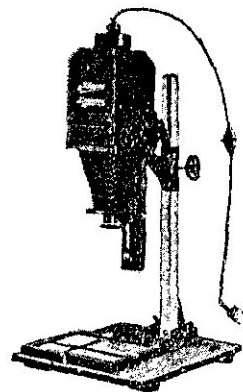
Prices :—

	Rs.	As.
Kodak Auto Focus Enlarger Model B complete with Kodak Anastigmat lens, Diffusion disk, set of seven flexible metal masks, Paper holder, Negative holder, electric cord and plug and 250 watt photo flood lamp	150	0
Extra photo flood lamp	3	0
Extra paper holder	28	0
Extra metal masks. Each As. 12 or per set of 7	4	8
Extra Diffusion disk	3	12
Extra Flashed opal glass	3	0
Extra sand blasted glass	0	14

IHAGEE UNIVERSAL LUMINAX

For negatives upto and including
9 × 12 cm.

A good quality enlarger gives soft and pleasantly harmonised enlargements. The degree of enlargement obtained is 1 to 3 diameter. Each enlarger supplied with cable and plug but no lamp and paper holder.



Prices :—

	Rs.	As.
Ihagee Universal Luminax with Veraplan Anastigmat F.4.5. lens in Iris Diaphragm	120	0
Pearl Lamp for above	5	0

Liberal allowance in part exchange.

IHAGEE DUPLEX LUMINAX

A highly efficient enlarger for small negatives; the inclusion of the condensing lens increases the intensity of printing light. The condensing lens may be removed, and an opal glass placed in the lamp house to diffuse the light. Range of enlargement with the $2\frac{1}{2}" \times 2\frac{1}{2}"$ model:— $1\frac{1}{2}$ to 6 diameters on the base board, and upto 14 diameters when projecting the image on to the floor. With the $3\frac{1}{2}" \times 2\frac{1}{2}"$ enlarger the diameter of enlargement available is $1\frac{1}{2}$ to 4, on the base board and upto 10 diameter on projecting the image on to the floor.

Prices:—

Ihagee Duplex Enlarger with F.4.5 Veraplan Lens in	Rs.	As.
Iris Diaphragm. Size $2\frac{1}{2}" \times 2\frac{1}{2}"$	105	0
Size 9×12 cm.	130	0
Pearl Lamp for above	5	0

ENSIGN MAGNAPRINT ENLARGERS.

Ensign Magnaprints are supplied in two sizes:—V/10 for $2\frac{1}{2}" \times 2\frac{1}{2}"$ or smaller and V 11 for $3\frac{1}{2}" \times 2\frac{1}{2}"$ or smaller negatives.

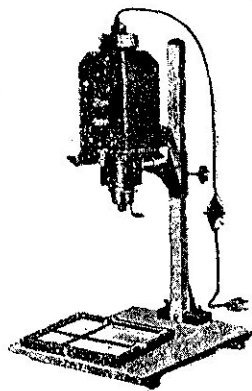
These strongly built British made enlargers are of excellent quality, the lamp body is constructed of light metal lined and finished internally with heat resisting enamel. It has a removable top fitted with a lamp holder. The general finish is silver ripple enamel and chromium plate. The carrier is provided with masks for a variety of sizes. The base board is very substantial and supports the mechanism with great rigidity. It is provided with paper clamps and sizes chart. Price includes plug, flex and switch, the bulb is charged extra.

Prices:—

	Rs.	As.
V/10. For all sizes upto $2\frac{1}{2}" \times 2\frac{1}{2}"$, fitted with Ensar F.6.3 lens, enlarges upto $15" \times 15"$, other sizes in proportion	150	0
Ditto, with Ensar F.4.5 lens	187	8

(prices to the next page)

You can safely count upon our service.



Ensign Magnaprint Enlargers—(contd.)

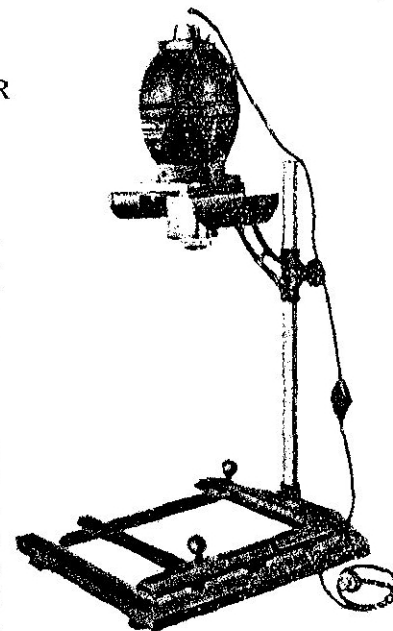
V/11. For all sizes upto $3\frac{1}{2}" \times 2\frac{1}{2}"$, fitted with Ensar F.6.3 lens, enlarges upto $15" \times 12"$, other sizes in proportion	170	0
V/11M. Ditto, with F.4.5 lens	205	0
V/2. With counter balance mechanism instead of friction drive, for all sizes upto $4\frac{1}{2}" \times 3\frac{1}{2}"$, fitted with Ensar F.6.3 lens, enlarges upto $20" \times 16"$, other sizes in proportion	240	0
AV/11. Automatic focussing model with friction drive raising mechanism for all sizes upto $3\frac{1}{2}" \times 2\frac{1}{2}"$, fitted with F.4.5 Dallmeyer Lens, enlarges upto $15" \times 12"$, smaller sizes in proportion	240	0
Silvalux lamp, opal. 100 watt for V/10 & V/11 models	2	12
Ditto, 150 watt for V/2 model	4	0
Special Carrier for strip films	7	8

OLYMPIC ENLARGER

Model D.

The Olympic Enlarger is a exceptional value, finely constructed and beautifully finished to take 6×6 cm. negatives cut or uncut with masks for smaller sizes.

The Lamp house is very well ventilated with enough room for very powerful lamps. The book form negative carrier takes either cut or uncut films and masks are provided for smaller size negative.



(continued to the next page)

Camera repairs by expert mechanics.