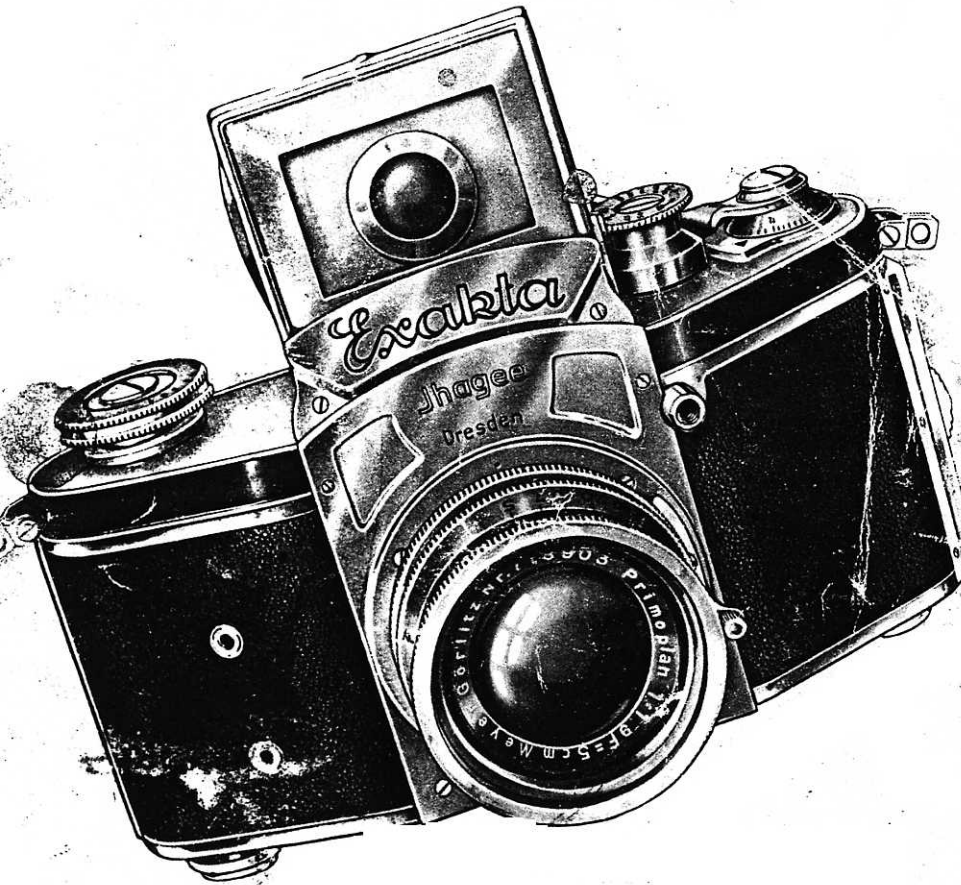


EXAKTA



KINE-EXAKTA

For 24 36 mm. Films



For serial pictures.
36 pictures at one
loading of 35 mm.
film. Either in
Cassettes or Day-
light loading spools.

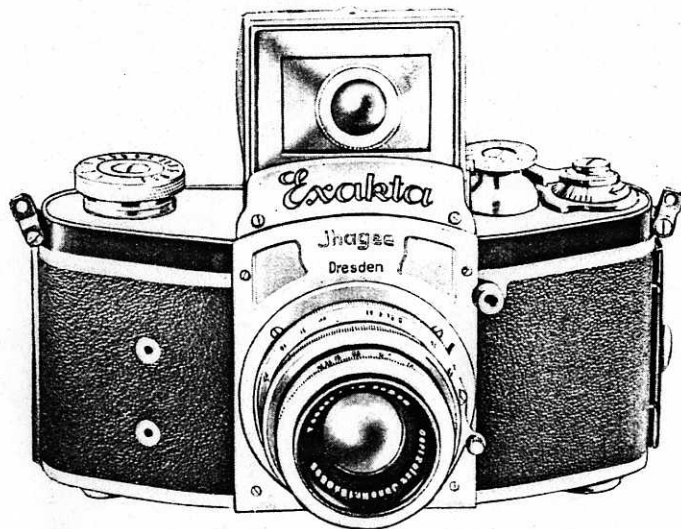
*Write for fully illustrated brochure,
free on request.*

Kine-Exakta

For 24 × 36 mm. Films

Latest Introduction for 1937

Patent Nos. 410306-462764



The most novel precision-made Miniature Reflex for pictures 24 × 36 mm.
Takes all standard perforated 36-exposure films.

A real Reflex—no parallax.

Crystal Focussing Screen, image magnified two diameters.

Hood fitted with extra magnifier for critical focussing.

Interchangeable Lenses in new locking bayonet catch mounts.

Focussing, scaled from three feet to infinity.

Lenses can be changed without fogging film.

The action of setting the shutter changes the film.

Picture Counter for 36 exposures.

Automatic Shutter Lock; shutter can only be released when Finder Hood is erect.

A special cutter is embodied in the camera so that fewer exposures than 36 can be made, the exposed section cut off, taken out and finished.

Measurements: 6 × 3½ × 3 ins. Weight: 32 ozs.

KINE-EXAKTA

Specification :

Die-cast light metal body—completely light-tight; folding finder hood opening by pressure on a button; frame finder; built-in ground glass screen and combined magnifier; second accessory magnifier for critical focussing; rewinding and film-cutting devices; mechanical inter-connection between shutter and film wind; picture counter to 36 exposures. Focal-plane self-capping shutter, giving exposures between 12 seconds and 1 1000th second normally and 6 seconds and 1 1000th second with delayed action mechanism. The Delayed Action Control allows 12 seconds to elapse after the release has been pressed before the shutter operates. Interchangeable lenses in bayonet fitting. Precision helical focussing from infinity to 3 feet. Automatic shutter lock, which only allows the shutter to be released when the finder hood is erect. Precision film channel in camera back. Tripod bush, leather neck sling, flexible wire release and connection sockets for flash-bulb work included.

Prices :

				£	s.	d.
8140 BR	Exaktar Anastigmat	f 3.5	focus 2 in. (5 cm.)	27	10	0
8140 Q	Zeiss Tessar	„	f 3.5 „ 2 „ (5 „)	34	10	0
8140 E	„	„	f 2.8 „ 2 „ (5 „)	38	10	0
8140 PL	Hugo Meyer Primoplan	f 1.9	„ 2 „ (5 „)	45	0	0
8140 LR	Zeiss Biotar	„	f 2 „ 2½ „ (5.8 „)	55	0	0
—	Solid Leather Ever-Ready Case			1	0	0

SPECIAL INTERCHANGEABLE LENSES :

Tessar	..	f 4.5, focal length 4¼ in. (12 cm.)	16	0	0
Tele-Tessar	f 6.3,	„ 7½ in. (18 cm.)	31	10	0
Tele-Megor	f 5.5,	„ 6 in. (15 cm.)	16	0	0
Tele-Megor	f 5.5,	„ 7½ in. (18 cm.)	20	0	0
Tele-Megor	f 5.5,	„ 10 in. (25 cm.)	30	0	0

Exakta-Lumimax Enlarger Model A (without condenser) 4 10 0

Exakta-Lumimax Enlarger Model B (with condenser) 6 10 0

Lumimax Projector-Enlarger, without lens, taking lens of Exakta camera 10 10 0

Vacu-Blitz Flash-bulb Outfit 2 5 0

Microscope Attachment 5 15 0

Extension Tubes, chromium finish (A or B) each 8 6

Pair of Distance Rings (necessary to fix the tubes into the bayonet fitting and on to the lens) 1 0 0

Reproduction or Copying Stand 6 10 0

Lens Hood (up to 38 mm. diameter) 7 6

Lens Hood (up to 51 mm. diameter) 10 6

Shutter Release Button 2 0

Finder Hood Extension Box, with magnifier 17 6

Ball and socket Tripod Head 7 6

Exakta Filters (Yellow, Green, Blue or Red) :

For f 3.5 lenses 12 6; for f 2.8 lenses 15 —; for f 1.9 and f 2 lenses 1 5 0

Herotar Polarisation Filter prices on application

Supplementary Lens for close work :

For f 3.5 lenses 8 6; for f 2.8 lenses 10 6; for f 1.9 and f 2 lenses 16 6

The Exakta Focal Plane Reflex

Patent Nos. 410306, 414465

For Roll Films

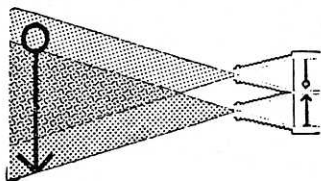
Full Size Pictures on V.P. Films (4×6.5 cm.)

Notwithstanding the small size of the body of this camera, pictures made on V.P. films, standard size, are very effective and large enough to give complete satisfaction. The picture shown on the ground glass is identical with the photograph to be taken. Pictures will always be sharp, as focussing and depth of focus can be easily controlled on the ground glass. It is impossible to take two pictures on one film, as the changing of the film from number to number automatically sets the shutter, therefore "Exakta" is always ready for use.

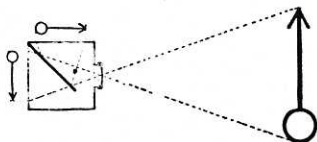
SOME PRINCIPAL ADVANTAGES :

FREE FROM PARALLAX

Only a mirror-reflected image as produced by the "Exakta" lens is always reliable and absolutely coincides with the final picture. Has it not happened to you, in spite of accurate observation through the finder, that, especially in close-up pictures, the body of a person was taken minus the head? No matter whether view finder was built into the camera or attached to it. Such failures are due to a separate finder and taking lens, and is called the parallax. The two diagrams will convince you of the superiority of the "Exakta" camera in this respect.



This is parallax



"Exakta" is free from parallax

ALWAYS SHARP PICTURES

Working with a mirror reflex camera is the acme of perfection. No estimating of distances, no time-consuming control of distance meters and tables! No trifling little image in a view finder!

The large reflected image reduces the work of adjusting the diaphragm and the focussing to almost automatic operations. By means of a precision helical mount, focussing to correct sharpness takes place with microscopic accuracy. A magnifier in the hood may further be relied on in case of ultra-critical focussing.

A WONDERFUL SHUTTER

A high-grade camera requires a first-class shutter. The self-capping focal plane shutter, on which the speeds can be easily read, makes instantaneous exposures from 1/25th to 1/1,000th second, as well as time exposures of 1/10, 1/2, 1 to 12 seconds without delayed action release and exposures from 1/1,000th to 6 seconds when the delayed action release is used. The "Exakta" focal plane shutter is reliable and precise and is more efficient than the usual shutters. Whether you wish to take a picture of everyday life, of a moving car or aeroplane or of a sporting or similar high speed event, your "Exakta" will not fail you!

A UNIVERSAL REFLEX FINDER

The finder hood is constructed to use the "Exakta" as a reflex or as an ordinary sports camera. By pressing lightly on a lever the finder hood springs open into the "open" position. It is also possible to see the ground glass screen while using the camera at eye level by means of a mirror in the light hood. By pressing down this mirror the light hood is changed into an ordinary and very exact frame finder.

INTERCHANGEABLE LENSES

An "Exakta" is remarkably efficient in every way, a real universal camera. There is not a sphere in which its numerous advantages cannot be utilised, including landscape or portrait work, scientific, sport, night and stage photography. Various interchangeable lenses of high quality can be supplied and the lenses can be changed in a very simple way even whilst the camera is loaded. For night, interior or stage work an "Exakta" with the largest aperture lens obtainable should be used.

ELEGANT AND PRACTICAL

The beautiful form of the "Exakta" attracts at once. Its handy body lies conveniently in your hand during the taking of a picture. The elegant trapezoid form is not only beautiful but ensures the utmost utilisation of space. Provided with reflex mirror, focal plane shutter and the most rapid lens, the "Exakta" nevertheless appears to be hardly larger than an ordinary roll film camera.

It is most beautifully made, entirely of metal, leather covered, and fitted with Tripod Bush and Cable Release.

Size overall 6 × 3 × 2½ ins. Weight, approximately, 26 ozs., according to lens fitted.

Exakta Reflex Cameras

Patent Nos. 410306, 414465

For Roll Films

Full Size Pictures on V.P. Film (4 × 6.5 cm.)



The "Exakta" being a direct Reflex Camera, the picture seen in the finder mirror is exactly the same as the one the lens will produce on the film, exact size and exact in detail. The same knob that winds the film to the next number also sets the shutter, and double exposures are quite impossible.

In the Model A the Ihagee Patent Safety Blind Focal Plane Shutter allows for speeds from 1/25th to 1/1,000th second, also time and bulb. The Model B is fitted with an extra control giving instantaneous exposures from 1/25th to 1/1,000th second, short and long time exposures from 1/10th, ½ to 12 seconds. Delayed action release for exposures from 1/1,000th to 6 seconds. The delayed action control allows 12 seconds to elapse after the release has been pressed before the shutter operates.

In addition to the direct reflex image the picture can also be seen at eye level by means of an auxiliary mirror; and a magnifier is incorporated for extra fine focussing, also frame finder for use when necessary.

The focussing is effected by a rapid Helical Screw and the scale is engraved from infinity up to four feet.

Body made entirely of metal, leather covered, with spring safety cover to the film recording aperture, for use with Panchromatic films, and fitted with Tripod Bush and Cable Release.

The Exakta Focal Plane Reflex

Patent Nos. 410306, 414465

For Roll Films

Full Size Pictures on V.P. Film (4×6.5 cm.)

MODEL A



The Ihagee Patent Safety Blind Focal Plane Shutter allows for speeds from 1/25th to 1/1,000th second, also time and bulb.

Prices :

		£	s.	d.
8150 A.B.R.	Exaktar Anastigmat f/3.5, 7.5 cm. focus	15	0	0
8150 A.Q.	Zeiss Tessar f/3.5, 7.5 cm. focus	19	0	0
8150 A.E.	Zeiss Tessar f/2.8, 7.5 cm. focus	23	0	0
—	Ever-Ready—Solid Leather Case for camera only	1	0	0
—	Square Solid Leather Case for Camera, Telephoto Lens and filters	1	5	0

INTERCHANGEABLE LENSES :

		£	s.	d.
Long Focus Ihagee Anastigmat	f 4.5, 10.5 cm. focus	5	15	0
Telephoto Lens "Dallan"	f 5.6, 6 in.	8	15	0
Tele-Megor Hugo Meyer	f 5.5, 15 cm.	11	10	0
"	f 5.5, 18 cm.	22	0	0
"	f 5.5, 25 cm.	33	0	0
Tele-Tessar Anastigmat	f 6.3, 12 cm.	15	10	0
"	f 6.3, 18 cm.	24	0	0
"	f 6.3, 25 cm.	30	0	0
Wide Angle Tessar	f 8, 5.5 cm.	13	10	0
"	Dallmeyer f 11, 2 1/2 in.	6	6	0

LIGHT FILTERS

		s.	d.
Yellow.	Light or Medium Density, for f 3.5 lenses	12	6
Ditto	ditto ditto f 2.8	15	0
Green.	Medium Density, for f 3.5 lenses	15	0
Ditto	ditto ditto f 2.8	17	6
Red.	For f 3.5 lenses	15	0
Ditto	f 2.8	17	6

Always state for which lens required.

Multi-Speed Exakta

Patent Nos. 410306, 414465

For Roll Films

Focal Plane Reflex

Full Size Pictures on V.P. Films 4 × 6.5 cm.

MODEL B



This represents the most perfect equipment of the Exakta. Instantaneous exposures of highest speeds from 1/25th to 1/1,000th second. Short and long time exposures from 1/10th, 1/2 to 12 seconds. Delayed action release for exposures from 1/1,000th to 6 seconds.

The Delayed Action Control allows 12 seconds to elapse after the release has been pressed before the shutter operates.

		£	s.	d.
8150 B.B.R.	Fitted with Exaktar Anastigmat f 3.5, focal length 7.5 cm.	19	10	0
8150 B.Q.	Fitted with Zeiss Tessar f 3.5, focal length 7.5 cm.	23	10	0
8150 B.E.	" f 2.8, " 7.5	27	10	0
—	Ever-Ready Solid Leather Case for camera	1	0	0
—	Square Form Solid Leather Case for camera, telephoto lens and filters	1	5	0
—	De Luxe Pigskin Case, strongly sewn and well finished, for camera and accessories, with good lock and key	3	3	0

INTERCHANGEABLE LENSES :

		£	s.	d.
Long Focus Ihagee Anastigmat	f 4.5, 10.5 cm. focus	5	15	0
Telephoto Lens "Dallan"	f 5.6, 6 in.	8	15	0
Tele-Megor Hugo Meyer	f 5.5, 15 cm.	11	10	0
"	f 5.5, 18 cm.	22	0	0
"	f 5.5, 25 cm.	33	0	0
Tele-Tessar Anastigmat	f 6.3, 12 cm.	15	10	0
"	f 6.3, 18 cm.	24	0	0
"	f 6.3, 25 cm.	30	0	0
Wide Angle Tessar	f 8, 5.5 cm.	13	10	0
"	Dallmeyer f 11, 2 1/2 in.	6	6	0

LIGHT FILTERS

		s.	d.
Yellow.	Light or Medium Density, for f 3.5 lenses	12	6
Ditto	ditto ditto f 2.8	15	0
Green.	Light or Medium Density, for f 3.5 lenses	15	0
Ditto	ditto ditto f 2.8	17	6
Red.	Light or Medium Density, for f 3.5 lenses	15	0
Ditto	ditto ditto f 2.8	17	6

Always state for which lens required.

Multi-Speed Exakta

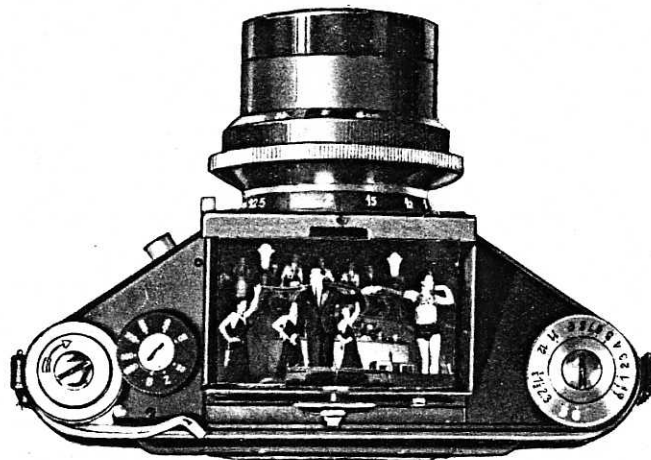
Focal Plane Reflex

Patent Nos. 410306, 414465

MODEL B

"NIGHT EXAKTA"

With Large Aperture Lenses



8150 P.L.	Fitted with Hugo Meyer Primoplan $f/1.9$, focal length 8 cm.	£	s.	d.
8150 S.S.	Fitted with Dallmeyer Super Six $f/1.9$, focal length $3\frac{1}{4}$ ins. (8 cm.)	39	10	0
8150 L.R.	Fitted with Zeiss Biotar $f/2$, focal length 8 cm.	36	0	0
—	Solid Leather Ever-Ready Case	47	10	0
—	Ditto ditto Case with divisions for accessories and lock and key	1	5	0
		1	12	6

INTERCHANGEABLE LENSES:

Long Focus Ihagee Anastigmat	$f/4.5$, 10.5 cm. focus	£	s.	d.
Telephoto Lens "Dallon"	$f/5.6$, 6 in.	5	15	0
Tele-Megor Hugo Meyer	$f/5.5$, 15 cm.	8	15	0
"	$f/5.5$, 18 cm.	11	10	0
"	$f/5.5$, 25 cm.	22	0	0
Tele-Tessar Anastigmat	$f/6.3$, 12 cm.	33	0	0
"	$f/6.3$, 18 cm.	15	10	0
"	$f/6.3$, 25 cm.	24	0	0
Wide Angle Tessar	$f/8$, 5.5 cm.	30	0	0
"	Dallmeyer $f/11$, $2\frac{3}{8}$ in.	13	10	0
		6	6	0



LIGHT FILTERS

Yellow.	Light or Medium Density	£	s.	d.
Green.	Medium Density	25	0	0
Red.		30	0	0

Always state for which lens required.

Multi-Speed Exakta

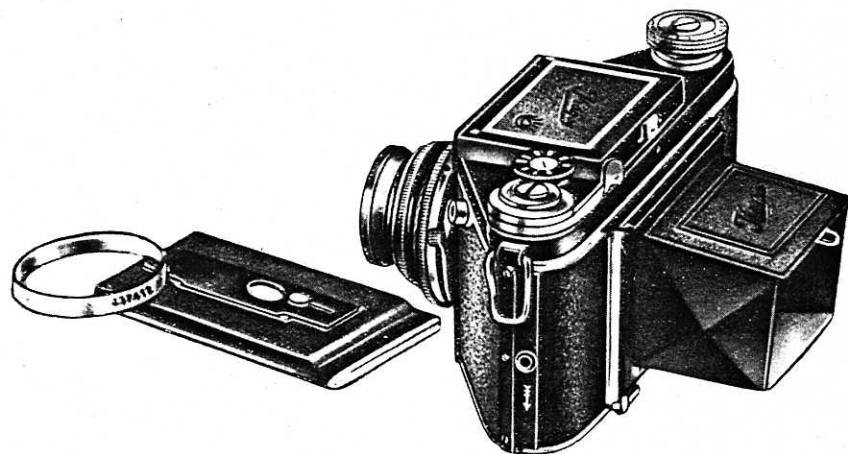
Focal Plane Reflex

Patent Nos. 410306, 414465

MODEL C

FOR ROLL FILMS AND PLATES

Full Size Pictures on V.P. Films 4×6.5 cm. or Plates $4\frac{1}{2} \times 6$ cm.



The "Plate Back" is an additional refinement to this beautiful miniature Reflex Camera.

Many photographers wish to avail themselves of the use of plates for special purposes.

This new model is fitted with a panel in the back which also carries the Film pressure plate. It can be taken out and the focussing screen inserted in its place.

A detachable ring is fitted on the lens mount which must be taken off *when using plates* to allow for the difference in register between plates and films.

Note. When using plates the picture must be focussed on the back screen. The reflex focussing screen is not in register for plates.

Three slides for 4.5×6 cm. plates and back focussing screen are provided.

Prices :

8150 C.BR	Fitted with Exaktar Anastigmat $f/3.5$, focal length 7.5 cm.	£	s.	d.
8150 C.Q	" " Zeiss Tessar $f/3.5$, " " 7.0 " "	22	10	0
8150 C.E	" " " " $f/2.8$, " " 7.5 " "	26	10	0
—	Solid Leather Ever-Ready Case	30	10	0
—	Solid Leather Case with division for Telephoto lens, filters, dark slides, etc.	1	2	6
—	Pigskin Case, De Luxe pattern, strongly sewn and well finished for camera and accessories, with good lock and key	1	10	0
—	Extra Dark Slides	3	3	0
		2	3	0

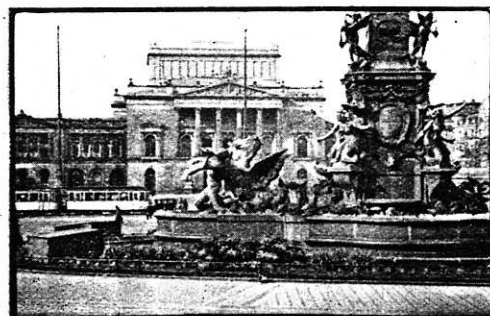
For Interchangeable Lenses and other accessories see pages 7 & 12.

Interchangeable Lenses for Exakta



Taken with Wide-angle Tessar F/8, Foc. length 5,5 cm.

Taken with Standard Lens Exaktar F/3.5, Foc. length 7,5 cm.



Taken with Tele-Megor F/5.5, Foc. length 15 cm.

The possibility of interchanging the lens even while the camera is loaded makes the Exakta suitable for all photographic purposes. Lenses of various focal distances (Telephoto lenses to 25 cms.), of various angles (Wide angle lenses to 66°) and of various apertures (Night lenses to F/1.9) give to amateurs as well as professional photographers a range of every possible usefulness.

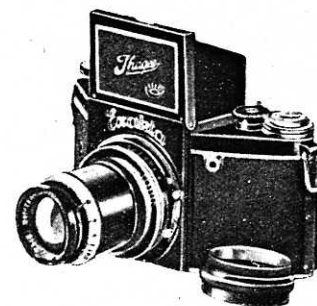
FOR PRICES SEE PAGES 6, 7 & 8

Accessories for Exakta Cameras

EXTENSION TUBES

Double Extension with Your EXAKTA

It may appear impossible, but it is nevertheless true! The Exakta Extension Tubes, screwed in between the focussing mount and the lens, produce a double extension effect. This makes it possible to obtain real close-ups of small objects, such as coins, stamps, or insects, grass, flowers, etc. The extension tubes may be had in two sizes, viz., A = 1½ cm. and B = 3 cm. The extensions may be joined and the extension of the focussing mount and two tubes B produce double the normal focal length, and thus pictures of the actual size of the object. The image on the ground glass is always decisive for focussing.



Prices Tube A or B s. d.
each 6 6

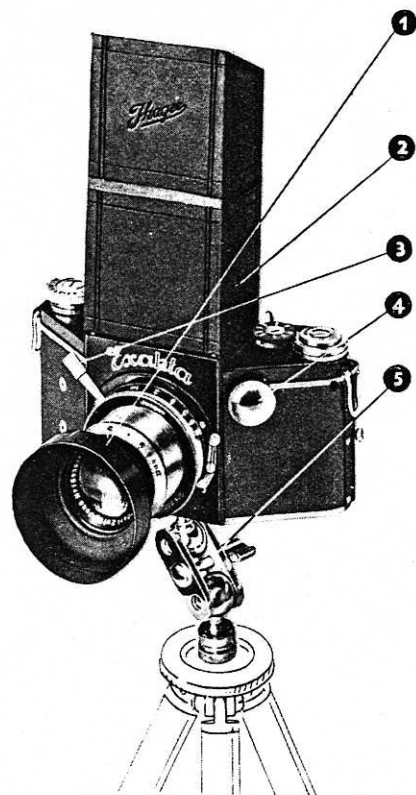
CASES FOR EXAKTA



The "Exakta" is worth careful protection. Therefore, when you buy a camera, purchase a case which will protect your "Exakta" from external damage. The case shown fully surrounds the camera without, however, interfering with its readiness to use. Open the case and your camera is ready for work. A bush holds camera and case together. You can further screw the "Exakta" with its case on to a stand, as the bush has the necessary outer thread.

Exakta Ever-ready Case for A and B up to f2.8 Lenses	£1 0 0
" " " for Plate Back Exakta	1 2 6
" " " for Night Exakta	1 5 0
Solid Leather Square Form Case for Models A and B, with divisions for camera, telephoto lens and filter, with lock and key	1 5 0
Ditto, ditto, for Model C	1 10 0
Pigskin Case, De Luxe pattern, strongly sewn and well finished, for all models of camera and accessories, with good lock and key	3 3 0

Accessories to facilitate working with EXAKTA



1. **The Lens Hood**
keeps troublesome front or side light (sun as well as artificial light) away from the lens. Indispensable for the attractive "against the light" exposures. Attached by slip-on mount to the front lens. s. d.
For all lenses except $f/2$ and $f/1.9$.. 7 6
For Night-Exakta $f/2$ & $f/1.9$ 10 6
2. **The Light-hood Extensions**
serve for keeping side light away from the focussing screen so as not to interfere with the brightness of the finder image.
Plain leather Extension in case 6 6
Leather light-hood extension in case, with magnifier enlarging the entire image on the screen (particularly to be recommended) .. 17 6
3. **The Focussing Pin**
is screwed into the focussing mount ring and facilitates adjustment of the lens .. 2 0
4. **The Additional Button-Release**
facilitates releasing of shutter if thick gloves are worn in cold weather. This additional button-release increases the surface of the release button .. 2 0
5. **The Ball Socket Joint**
is chiefly intended for vertical pictures if a tripod is used, but does good service also for technical photos by permitting universal adjustment of the Exakta .. 7 6

EXAKTA LIGHT SCREENS

When ortho- or panchromatic material is used, Exakta Screens help to bring out correct tone values. The **Yellow Screen** for orthochromatic material. The **Green Screen** for panchromatic material. The **Blue Screen** for panchromatic material with strong sensibility to red, particularly for exposures by artificial light. The **Red Screen** for panchromatic and infra-red material, especially for distant exposures, and also for night effects in daylight.

Screens with corresponding slip-on mounts are available, for the various diameters of the lenses. When ordering, please state name and aperture of lens, and in case of yellow screens whether light, medium or dark is wanted.

Yellow. Light or Medium Density, for $f/3.5$ lenses ..	s. d.
Ditto ditto $f/2.8$ lenses ..	12 6
Ditto ditto $f/1.9$..	15 0
Ditto ditto $f/1.9$..	25 0
Green, for $f/3.5$ lenses ..	15 0
Ditto ditto $f/2.8$ lenses ..	17 6
Ditto ditto $f/1.9$..	30 0
Red or Blue, for $f/3.5$ lenses ..	15 0
Ditto ditto $f/2.8$ lenses ..	17 6
Ditto ditto $f/1.9$..	30 0

Always state for which lens required.



EXAKTA ENLARGER



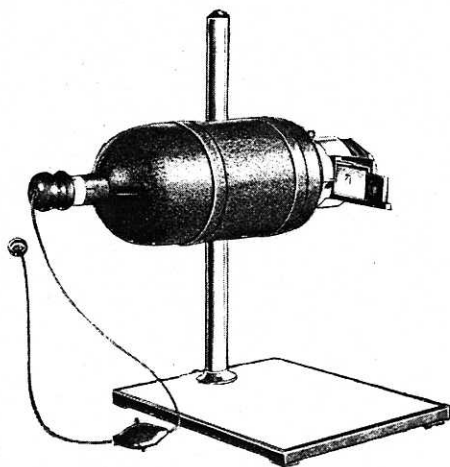
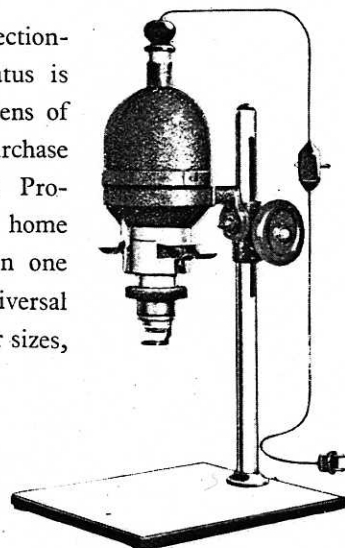
This is used in conjunction with the lens of the "Exakta," which is unscrewed from the camera and screwed into the front of the enlarger. Focussing is done by means of the focussing mount. Films need not be cut into single pictures as a very practical film channel is provided. Films will not be affected by heat, as there is a hinged top for ventilation. A glass mask is supplied for "Exakta" size (V.P.) negatives and a clamp for Enlarger to be used horizontal or vertical. A safety switch is embodied in the flex. Enlargements from $4 \times 6\frac{1}{2}$ cm. (V.P.) negatives can be made up to 12×10 inches or even larger.

Price, for use with lens of Exakta camera ..	£ s. d.
Universal Enlarging Frame 30×24 cm., $11\frac{1}{2} \times 9\frac{1}{2}$ in. (see page 14) ..	4 10 0
Extra Glass Masks 24×36 mm., 3×4 cm., $4\frac{1}{2} \times 6$ cm., in Case ..	1 7 6
Lamps (state voltage when ordering) ..	7 0
.. extra ..	2 9

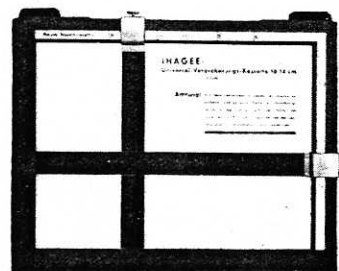
DUPLEX LUMIMAX ENLARGER

for **EXAKTA** pictures

For enlarging Exakta negatives the Projection-Lumimax is recommended. This apparatus is used in conjunction with the high class lens of the Exakta and it is not necessary to purchase another special lens for enlarging. The Projection-Lumimax may also be used for home projection, thus giving two possibilities in one apparatus. One of the practical Universal Enlarging frames, adjustable for all smaller sizes, is strongly recommended for use.



Duplex Lumimax as Projector



Universal Enlarging Frame

Duplex Lumimax

1937 Entirely New Model

COMBINATION ENLARGER AND PROJECTION LANTERN

For V.P., 6 × 6 cm. and smaller sizes
for enlarging to 15 times linear

Specification :

Lamp House. Aluminium. Crystalline finish, adjustable tube for adjustment of lamp, with flex and safety switch. Spring film stage, with bevelled glass plate.

Optical System. Four-inch Double Plano Condenser. Helicoidal fine adjustment, and ruby screen.

Baseboard. Made of hard wood for 12 × 10 paper.

Stand and Focussing. Heavy nickel-plated pillar support with rack adjustment for coarse focussing. Body swings at right angles, on a stout quadrant and fixed by heavy butterfly nut and bolt to allow for projection, or for enlargements of greater size than 12 × 10.

Prices :

Complete Outfit, including connection to lighting circuit with switch (but without lamp), stand, baseboard and condenser : £ s. d.

Without objective, with mount for Exakta lens	10	10	0
With Ihagee Anastigmat f/4.5, 7.5 cm. focal length, with iris diaphragm	13	0	0
Lamps for enlarging, 100-watt	2	9	
„ „ projection, 100-watt	10	9	

ACCESSORIES

Extension Tube for Projection, as illustrated. An important expedient if perfectly uniform illumination of screen picture is desired. Indispensable for projector lamps and should also be used with all slightly frosted lamps 17 6

Spare Glass Masks, supplied in all sizes from substandard film up to 2½ × 2½ in. (6 × 6 cm.), in case each 7 6

Glass Masking Frames for Cut Films, supplied in all sizes from substandard film up to 2½ × 2½ in. (6 × 6 cm.) each 6 0

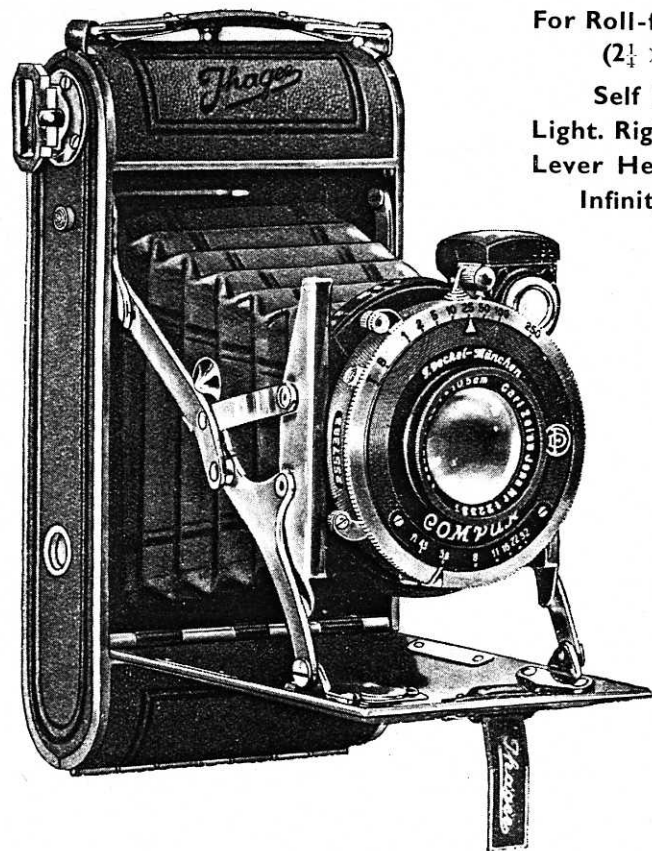
Sliding Carriers for Lantern Slides, suitable for 2 × 2 in. (5 × 5 cm.) or 2½ × 1½ in. (4.5 × 6 cm.) slides each 6 6

Double Extension Connection for reducing to three-fourths of original size. Important for reducing 2½ × 2½ in. (6 × 6 cm.) negatives to 2 × 2 in. (5 × 5 cm.) lantern slides 1 5 0

The Duplex Lumimax is also made for use with Kine-Exakta negatives 24 × 36 mm. (see page 3) without lens .. Price 10 10 0

12 × 10 Universal Enlarging Frames, white inside for sharp focussing, open like a book, and always keep the paper flat. The portions of the paper covered by the edge remain white to provide a nice border for the enlargement. Displaceable steel masks. For all sizes up to 11½ × 9½ in. (30 × 24 cm.) 1 7 6

The AUTO-ULTRIX



For Roll-films 6×9 cm.
($2\frac{1}{4} \times 3\frac{1}{4}$ in.)

Self Erecting
Light. Rigid. Automatic.
Lever Helical Focussing
Infinity to 5 feet.

Specification :

Aluminium body, nickelled struts. Film pressure plate, double rollers ensuring absolute flatness of film.

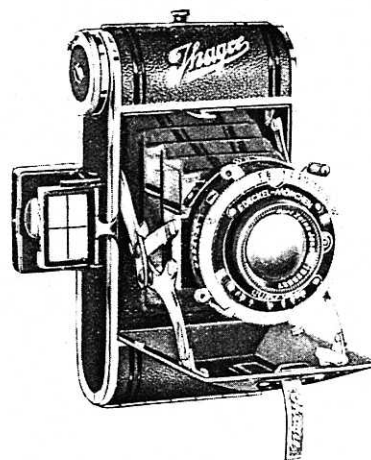
Hinged back, 2 tripod bushes, Cable release, Brilliant and folding frame finders. Covered leatherette, leather bellows. Safety cover to window for Pan. films.

Prices :

No. 4860 M.V. With $f/4.5$ Ihagee Anastigmat Lens and 3-speed Shutter, $1/25$, $1/50$, $1/100$ th second and T. and B. exposures	£	s.	d.
	4	4	0
No. 4860 M.C. With $f/4.5$ Ihagee Anastigmat Lens and Compur Shutter with delayed action—speeds 1 second to $1/250$ th second and T. and B. exposures	6	6	0
No. 4860 M.P. With $f/4.5$ Ihagee Anastigmat Lens and Prontor II shutter with delayed action—speeds 1 second to $1/150$ th second and T. and B. exposures	5	10	0

The "AUTOLETTE"

Precision Made—V.P. $2\frac{1}{2} \times 1\frac{1}{8}$ ins. (4×6.5 cm.)



The appearance of the "AUTOLETTE" may easily lead one to imagine that it would only make pictures 3×4 cm. like so many of the small cameras in use, but nevertheless it is a self-erecting roll film camera and will make the standard size pictures $2\frac{1}{4} \times 1\frac{1}{8}$ in. (4×6.5 cm.) This is a size that yields beautiful direct pictures suitable for albums, frames or silhouettes, without enlarging.

These pictures are twice the size of those made in the 3×4 camera and owing to the superiority of the longer focus lens in the "AUTOLETTE" they are in every respect infinitely better for enlarging.

Specification :

Automatic action (self-erecting) and the Optical View Finder opens with the camera, the lens panel opens out parallel and so eliminates

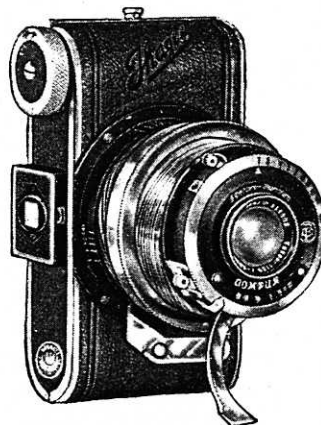
any strain on the bellows. The focussing scale is over the objective and is easily read from above. The body is made of one piece of aluminium with hinged back. Size $4\frac{1}{2} \times 2\frac{3}{8} \times 1\frac{1}{8}$. Weight only 11 ozs.

No. 2850. With $f/3.5$ Ihagee Anastigmat and Prontor II Shutter speeds 1 second to $1/175$ th second, and delayed action release	£	s.	d.
Soft Leather Case.	5	17	6
	6	6	

The "PARVOLA"

V.P. $2\frac{1}{2} \times 1\frac{1}{8}$ ins. (4×6.5 cm.)

Standard Size :



This miniature film camera has no bellows and is therefore practically indestructible. Its usefulness is universal, and it is equally well suited for portrait, landscape and architectural work. A helical mount with patented double thread provides a long extension and permits close focussing up to 20 in. distance.

Specification :

Metal body covered with leather. Lens support remains on camera even if closed. Optical view finder, automatic shutter lock for preventing accidental release. Silk carrying cord for neck. Size including lens projection $4\frac{3}{8} \times 2\frac{3}{8} \times 2$ ins. Prices including soft leather case.

No. 1350 MSC. Ihagee Anastigmat $f/4.5$ 7cm. focus Compur shutter 1 sec. to $1/100$ th T. and B. with delayed action	£9	9	0
No. 1350 ESRC. Zeiss Tessar $f/2.8$ 7.5 cm. focus Compur shutter 1 sec. to $1/100$ th T. and B. with delayed action	£15	15	0

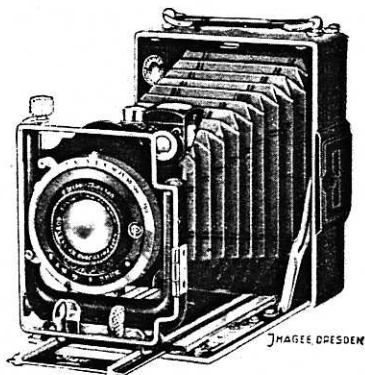
The "Pioneer"

For $3\frac{1}{2} \times 2\frac{1}{2}$ in. Plates and Film Pack

The Pioneer Camera has double extension and covered rack and pinion and is fitted with patented infinity stop which automatically releases itself in focussing near objects.

Specification :

Metal body, leather covered, leather bellows, rising front by screw spindle, and cross front, wire release, Iris diaphragm, brilliant finder with level, frame finder with sighter, patented infinity stop, 2 tripod bushes, 3 metal dark slides.



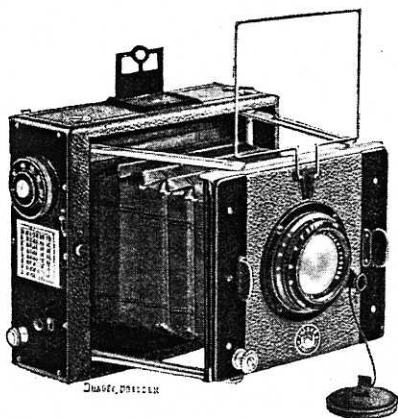
Prices :

No. 710 P.	Fitted with $f/3.5$ Hugo Meyer Trioplan Anastmat, Ibsor	£	s.	d.
	Shutter, speeds 1 sec. to $1/100$ th sec., Time and Bulb and delayed action	8	15	0
—	Extra Dark Slides each	2	6	
—	Film Pack Adapter, leather covered	10	6	
—	Solid Leather Case, velvet lined, with lock and key	15	0	

"Ihagee" Sport and Press Camera

For Plates and Film Packs 9×12 cm. or $\frac{1}{4}$ -plate

Reliable in Action—Simple in Construction



One touch and the camera is ready for work and sharply focussed at infinity. Close focussing is done by the focussing mount of the lens.

Body covered with real leather. Metal lens panel, with rising movement, Focal plane shutter for time, "bulb" and instantaneous exposures of $1/15$ th to $1/1,000$ th second. **Self-capping blind, works without vibration.** Direct vision finder, with sight, three metal slides in case. Tripod Bushes.

Prices :

No. 1820Z	Zeiss Tessar $f/4.5$ 15 cm. focus	£	s.	d.
No. 1820Q	Zeiss Tessar $f/3.5$ " " "	36	0	0
—	Extra Slides	45	0	0
—	Film Pack Adapter, Leather covered	3	0	
—	Leather Case, velvet lined, with lock and key	12	6	
		2	0	0