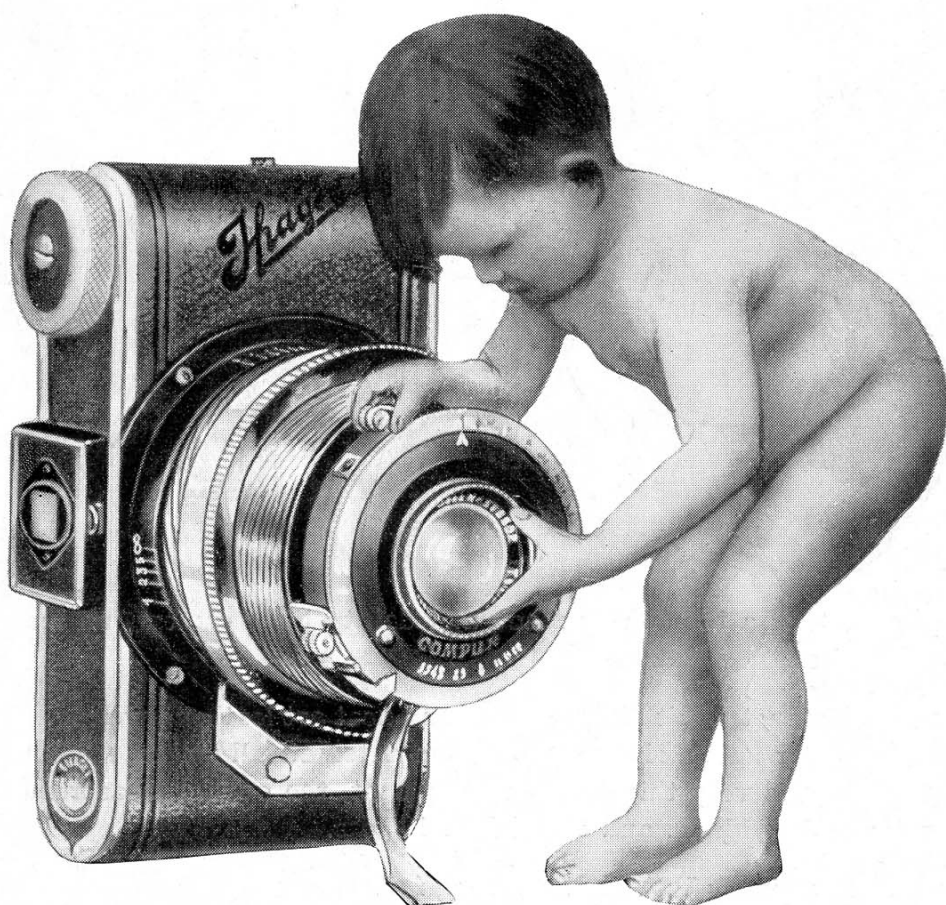


IHAGEE CAMERAS



GARNER & JONES, LTD.

Sole Distributors in Gt. Britain for IHAGEE CAMERAS

**POLEBROOK HOUSE, GOLDEN SQUARE,
LONDON, W.1**

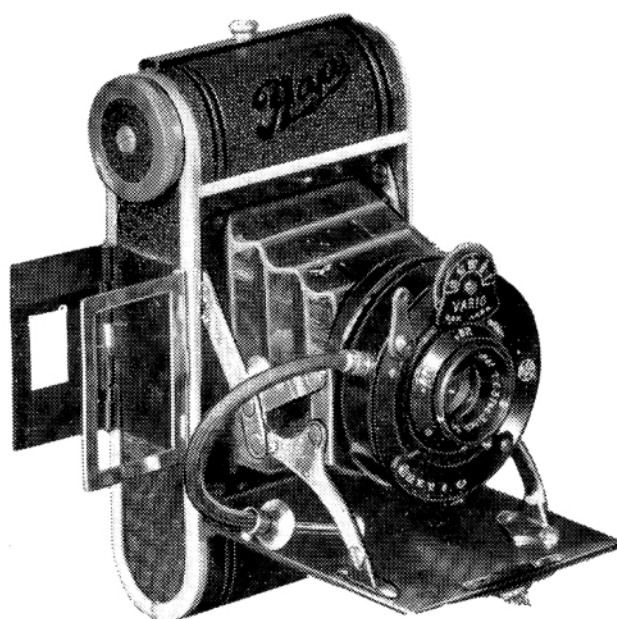
Telephone - GERRARD 2300

• IHAGEE CAMERAS •

The Latest Ihagee Novelty

Autolette

For 8 Full Size V.P. Pictures $2\frac{1}{2} \times 1\frac{5}{8}$ ins.



The Autolette is a beautifully made and dainty little camera, on unconventional lines.

The body is of metal, with hinged back and neat art leather covering. The lens and shutter unit springs into position automatically when the button is pressed. It is very thin and curiously neat, the overall measurements being $4\frac{5}{8} \times 2\frac{3}{8} \times 1\frac{1}{4}$ ins. and the weight $10\frac{1}{2}$ ozs.

It takes the ordinary V.P.K. film, giving full size $2\frac{1}{2} \times 1\frac{5}{8}$ in. pictures. It is beautifully finished and a credit to the works production.

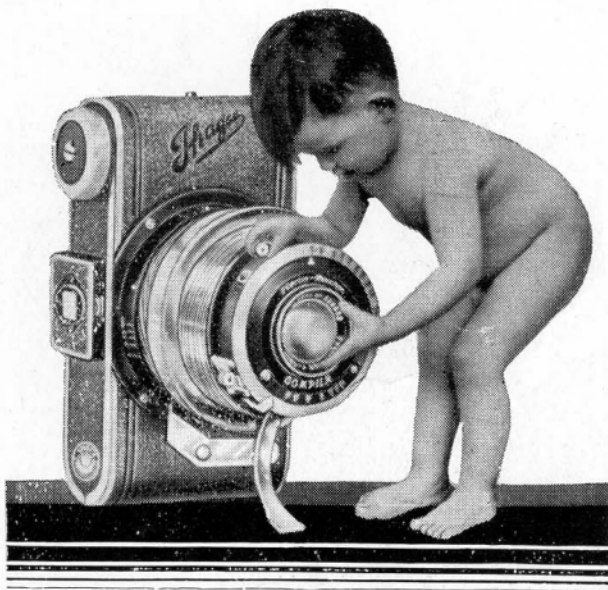
No. 4850 is fitted with frame finder and No. 2850 with Newton type lens finder. Lenses 7 cm. focus.

No.		Prices
		£ s. d.
4850 KV	With Ihagee Anastigmat F/6.3 and Vario Shutter, with delayed action release	3 7 6
2850 MSP	With Ihagee Anastigmat F/4.5 and Pronto Shutter, with delayed action release	4 15 0
2850 MC	With Ihagee Anastigmat F/4.5 and Compur Shutter	6 15 0
2850 QC	„ Zeiss Tessar F/3.5 and Compur Shutter	11 15 0
2850 NC	„ Schneider Xenar Anastigmat F/3.5 and Compur Shutter	10 5 0
	Solid Leather Case	0 6 6
	Lumimax Enlarger for "Autolette"	3 3 0

IHAGEE CAMERAS

Weeny-Ultrix

For 8 Full Size V.P. Pictures $2\frac{1}{2} \times 1\frac{5}{8}$ ins.



A V.P.
Camera
without
a bellows
for
Full-size
V.P. Pictures

The "Weeny Ultrix" is the most important invention in Pocket Film Cameras that has been introduced for many years. It is quite a new departure in a camera of this character to entirely eliminate bellows and yet fit long focus lenses 7 cm. focal length (Tessar F/4.5 is 6.5 cm.), with all their attendant advantages.

This is effected by means of the ingenious adaptation (patented) of a **double helical thread**, right and left-handed, on the extending tube which carries the lens and shutter.

The camera is a precision-made instrument, beautifully finished in aluminum and nickel, covered with best quality leather, and has many special features, including a foot to support the camera, for vertical work, during time exposures, etc., which folds round the tube behind the shutter and cannot be lost, an automatic shutter catch to obviate accidental exposures, and a direct view finder giving the angle of view of the lens and tripod bush. The size of the camera is $4\frac{5}{8}$ ins. high \times $2\frac{1}{4}$ \times 2 ins. Weight 14 ozs.

No.		Prices		
		£	s.	d.
1350 MSP	Ihagee Anastigmat F/4.5, 7 cm. focus and Delayed Action Pronto Shutter	5	5	0
1350 MC	Ihagee Anastigmat F/4.5, 7 cm. focus and Compur Shutter	7	5	0
1350 ZC	Tessar F/4.5, 6.5 cm. focus and Compur Shutter.. ..	10	12	6
1350 AC	Tessar F/3.5, 7 cm. focus and Compur Shutter	12	0	0
1350 NC	Schneider F/3.5 Anastigmat, 7 cm. focus and Compur Shutter.. ..	10	10	0
	Price includes fine soft Leather Case with Lightning Fastener.			
—	Lumimax Enlarger for "Weeny Ultrix"	3	3	0

• IHAGEE CAMERAS •

Auto. Ultrix No. 2860

For Roll Films $3\frac{1}{4} \times 2\frac{1}{4}$,
6 × 9 cm.

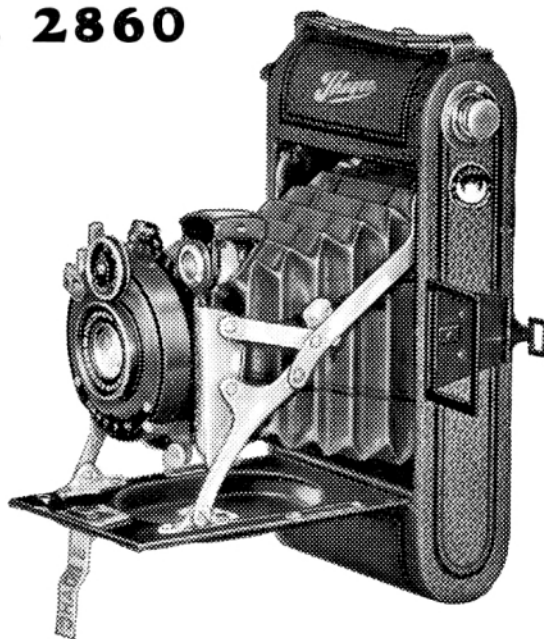
**The Easiest Roll Film Camera
to load and unload**

A newly-designed model that opens automatically on pressing a button and brings the lens into focus for infinity. Focussing "close-ups" is provided for by a Helical Mount.

Very light and extremely rigid.

All aluminium body, and nickelled struts. Film pressure plate. Covered leatherette and leather bellows.

Cable release. Brilliant and wire frame finders.



No.		£	s.	d.
2860 KV	Ihagee Anastigmat F/6.3, Zenith 3-speed Shutter	4	4	0
2860 MV	Ihagee Anastigmat F/4.5, Zenith 3-speed Shutter	5	0	0
2860 MI	Ihagee Anastigmat F/4.5, Ibsor 7-speed Shutter	6	6	0
2860 ZSC	Zeiss Tessar Anastigmat F/4.5 in Compur Shutter, with delayed action release	10	0	0
—	Leather Case	0	7	6
—	Leather Case, velvet lined with lock and key	0	12	6

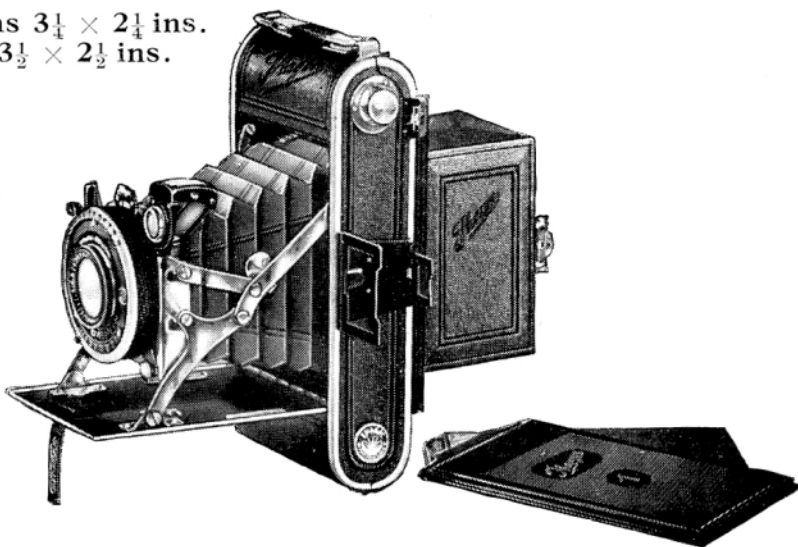
Auto. Ultrix No. 3860—Plate Back

For Roll Films $3\frac{1}{4} \times 2\frac{1}{4}$ ins.
or Plates $3\frac{1}{2} \times 2\frac{1}{2}$ ins.

This camera is similar to No. 2860 described above but is designed to take either roll films or plates.

It is supplied with removable panel when using plates.

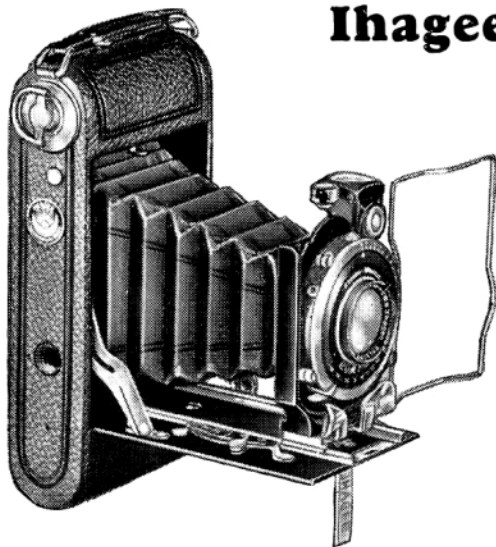
Complete with 3 single metal slides and focussing screen, and cable release.



No.		£	s.	d.
3860 KV	Ihagee Anastigmat F/6.3, Zenith 3-speed Shutter	5	10	0
3860 MV	Ihagee Anastigmat F/4.5, Zenith 3-speed Shutter	6	6	0
3860 MI	Ihagee Anastigmat F/4.5, Ibsor 7-speed Shutter	7	12	6
3860 ZSC	Zeiss Tessar Anastigmat F/4.5 in Compur Shutter, with delayed action release	11	7	6
—	Leather Case, velvet lined, with lock and key	0	12	6

IHAGEE CAMERAS

Ihagee Ultrix



FOR ROLL FILMS

With Radial Focussing Lever

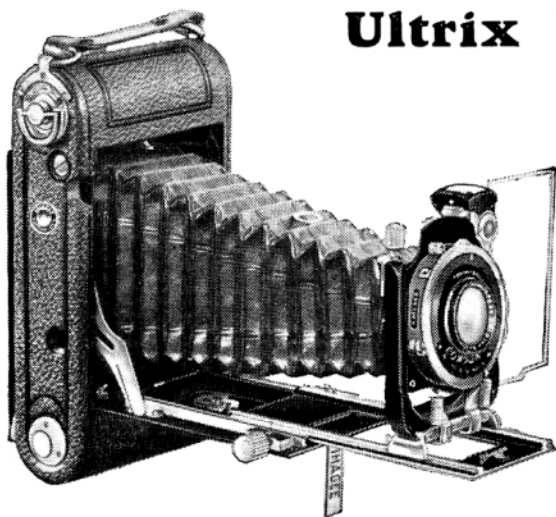
An infinitely superior method of focussing, as the distance scale figures are on a wide arc, and very easily seen.

The Ihagee Ultrix is a roll film camera of the highest class. Its construction combines portability, lightness and rigidity, in a remarkable degree, while the finish leaves nothing to be desired.

Details : Metal body drawn in one piece of aluminium, covered with real leather. Leather bellows. Aluminium baseboard and front, black enamelled. Focussing by new radial lever. Brilliant finder, with spirit level. Wire view finder, with sight. Cable release. Iris diaphragm. Tripod bushes.

No.		6 × 9 cm. (3½ × 2¼ ins.)	6½ × 11 cm. (4¼ × 2½ ins.)	8 × 10½ cm. (4¼ × 3¼ ins.)
		£ s. d.	£ s. d.	£ s. d.
1460 KI	Ihagee Anastigmat F/6.3, in 7-speed Shutter	6 0 0	—	—
1460 MSC	Ihagee Anastigmat F/4.5, in Delayed Action Compur Shutter	8 8 0	1470 MSC 9 10 0	1475 MSC 10 15 0
1460 ZSC	Zeiss Tessar F/4.5, in Delayed Action Compur Shutter	10 10 0	1470 ZSC 11 11 0	1475 ZSC 12 12 0
—	Leather Case, velvet lined, shoulder strap and lock and key	0 12 6	0 14 0	0 15 0

Ultrix Duplex



No. 1560—Double Extension

For Roll Films 3½ × 2¼ ins.—6 × 9 cm. and Plates 3½ × 2¼ ins.—6½ × 9 cm.

The Ultrix Duplex is fitted with adapter to enable the use of metal slides for plates 3½ × 2¼ ins. (6½ × 9 cm.). It is the most complete universal camera of its type. Equally useful for roll films or plates and fitted with every movement and refinement, including double extension. It is of de luxe finish and appearance and notwithstanding its complete range of movements is remarkably compact and neat.

Details : Camera body covered with genuine leather. Leather bellows. Aluminium baseboard and front black enamelled. Rising, falling and cross front. Infinity stop with automatic release when adjusted for near objects. Cable release. Iris diaphragm.

Brilliant finder with spirit level. Tripod sockets. Plate adapter with focussing screen and three metal slides. Compur shutter with delayed action.

No.		Prices £ s. d.
1560 KI	Ihagee Anastigmat F/6.3 in Ibsor 7-speed Shutter	10 5 0
1560 MSC	Ihagee Anastigmat F/4.5 in Compur Shutter with delayed action	12 10 0
1560 ZSC	Zeiss Tessar F/4.5 in Compur Shutter with delayed action ..	14 14 0
—	Extra Slides	0 2 3
—	Film Pack Adapter	0 8 6
—	Leather Case, velvet lined, shoulder strap and lock and key	
—	for camera only	0 12 6
—	Ditto, ditto, ditto, for complete outfit	1 1 0

• IHAGEE CAMERAS •

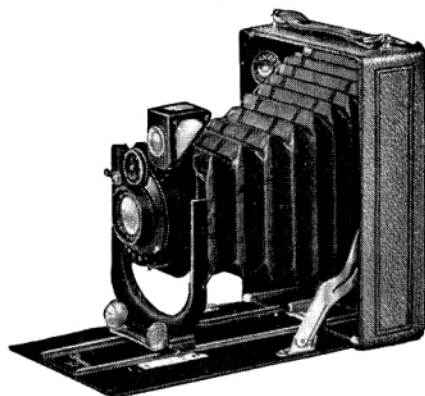
Ihagee-Derby

For Plates and Film Packs $3\frac{1}{2} \times 2\frac{1}{2}$ ins.

A nicely made and well finished model, efficient and of good appearance, it is wonderful value at the very moderate price at which it is offered.

Details : Metal body covered with best grained leatherette. Leather bellows. Focussing screen with light hood. Iris diaphragm. Wire release. Brilliant finder. Tripod sockets. One metal slide. Shutter for time and instantaneous, 1/25th-1/50th-1/100th second.

No.		£	s.	d.
310 KV	Ihagee Anastigmat F/6.3 in Zenith Shutter	3	5	0
—	Extra Slides	0	2	3
—	Film Pack Adapter	0	8	6
—	Leather Case for camera & 3 slides	0	10	6

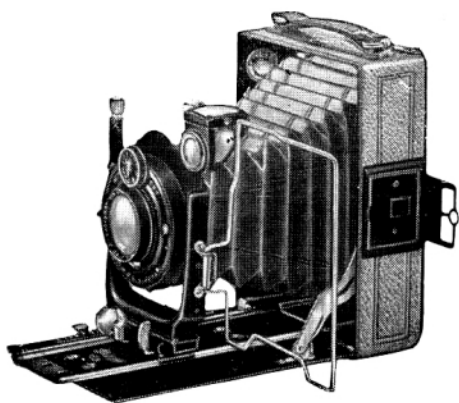


Viktor

For Plates and Film Packs $3\frac{1}{2} \times 2\frac{1}{2}$ in.— $6\frac{1}{2} \times 9$ cm.

A really well designed and beautifully finished camera at a moderate figure, fitted with new radial focussing lever.

Details : Metal body covered with finest grained leatherette. Aluminium baseboard and front black enamelled. Focussing screen with light hood. Cable release. Iris diaphragm. Brilliant finder with spirit level. Tripod sockets. Three metal slides.



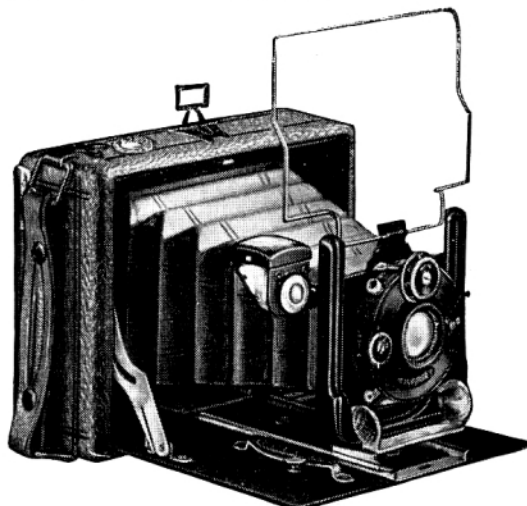
No.	No. 510, $3\frac{1}{2} \times 2\frac{1}{2}$ ins.	Lens Focus, 10.5 cm.	£	s.	d.
510 KV	Ihagee Anastigmat F/6.3 in 3-speed shutter		4	4	0
510 MI	Ihagee Anastigmat F/4.5 in Ibsor 7-speed shutter		6	6	0
—	Extra Slides		0	2	3
—	Film Pack Adapter		0	8	6
—	Leather Case, velvet lined, with lock and key		0	12	6

Venus

For Plates and Film Packs $3\frac{1}{2} \times 2\frac{1}{2}$ ins.— $6\frac{1}{2} \times 9$ cm.

A horizontal model of best construction, fitted with all movements and radial focussing lever. An ideal camera for landscape and general photography.

Details : Body covered with real leather. Leather bellows. Aluminium baseboard and lens standard black enamelled. Rising and falling front. Focussing screen, with light hood. Cable release. Iris diaphragm. Brilliant finder. Wire view finder. Tripod sockets. Three metal slides.

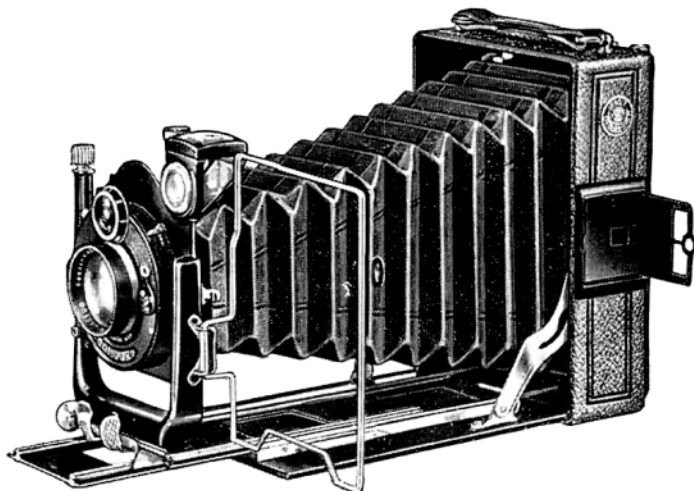


No.	No. 610, $3\frac{1}{2} \times 2\frac{1}{2}$ ins.	Lens Focus, 10.5 cm.	£	s.	d.
610 MI	Ihagee Anastigmat F/4.5 in Ibsor 7-speed shutter		6	12	6
610 MSC	Ihagee Anastigmat F/4.5 in delayed action Compur shutter		8	10	0
610 TSC	Hugo Meyer Double Anastigmat Veraplan F/4.5 in delayed action Compur shutter		9	15	0
—	Extra Slides		0	2	3
—	Film Pack Adapter		0	8	6
—	Leather Case, velvet lined, with lock and key		0	12	6

• IHAGEE CAMERAS •

Patent Duplex

For Plates and Film Packs $3\frac{1}{2} \times 2\frac{1}{2}$ ins. ($6\frac{1}{2} \times 9$ cm.)
 $\frac{1}{4}$ -plate (9×12 cm.)



A real camera de luxe, with double extension. It is replete with every possible movement and is an outstanding example of modern camera construction.

Details : Body made of light metal, covered with finest morocco leather. Baseboard black enamelled. Leather bellows. Front black enamelled. Rising, falling and cross front. Focussing screen, with light hood. Cable release. Iris diaphragm. Brilliant finder, with spirit level. Wire view finder, with sight. Infinity stop with automatic release. Tripod sockets. Three metal slides.

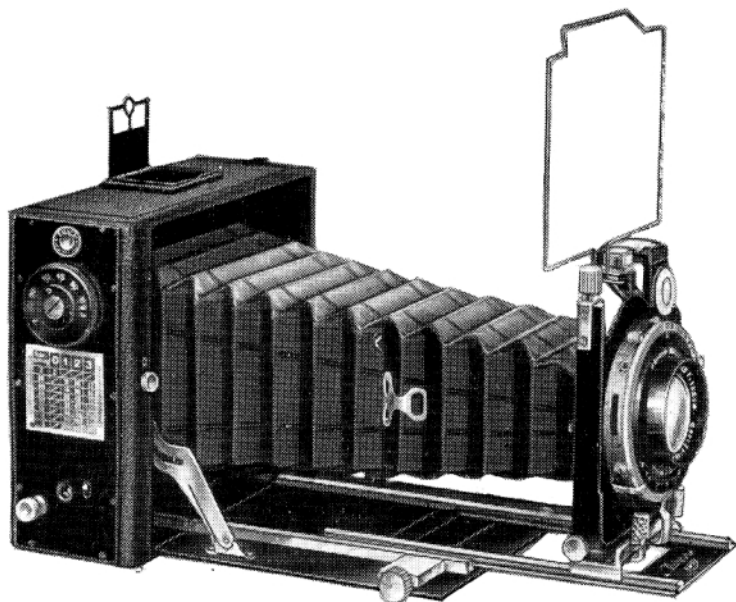
No.	No. 710, $3\frac{1}{2} \times 2\frac{1}{2}$. Lens Focus 10.5 cm.	Prices		
710 KI	Ihagee Anastigmat F/6.3, in Ibsor 7-speed shutter	£	s.	d.
710 MSC	Ihagee Anastigmat F/4.5, in Compur shutter with delayed action ..	7	10	0
710 TSC	Hugo Meyer Double Anastigmat Veraplan F/4.5, in Compur shutter ..	9	10	0
	with delayed action	11	0	0
710 ZSC	Zeiss Tessar F/4.5, in Compur shutter with delayed action ..	12	0	0
—	Extra Slides	0	2	3
—	Film Pack Adapter	0	8	6
—	Leather Case, velvet lined, for camera and three slides ..	0	17	6

No.	No. 720, $4\frac{1}{4} \times 3\frac{1}{4}$ — 9×12 cm. Lens Focus 13.5 cm.	Prices		
720 KI	Ihagee Anastigmat F/6.3, in Ibsor 7-speed shutter	£	s.	d.
720 MSC	Ihagee Anastigmat F/4.5, in Compur shutter with delayed action ..	8	10	0
720 TSC	Hugo Meyer Double Anastigmat Veraplan F/4.5, in Compur shutter ..	11	12	6
	with delayed action	12	15	0
720ZSC	Zeiss Tessar F/4.5, in Compur shutter with delayed action ..	14	10	0
—	Extra Slides	0	2	6
—	Film Pack Adapter	0	10	0
—	Leather Case, velvet lined, for camera and three slides ..	1	1	0

• IHAGEE CAMERAS •

Focal Plane Duplex

For Plates and Film Packs



The Focal Plane Duplex is a horizontal model fitted with the IHAGEE patented Self-Capping Focal Plane Shutter, giving a range of speeds from 1/15th to 1/1000th of a second and working entirely without vibration. It is also fitted with a Compur Shutter with delayed action, giving speeds from 1 second to 1/250th second. The Focal Plane Duplex is, therefore, a truly universal instrument, capable of every class of photographic work.

Details : Camera body made of well seasoned wood, covered with real leather. Aluminium base-board black enamelled. Leather bellows. Focussing screen with light hood. Rising, falling and cross front. Patent release. Iris diaphragm. Brilliant finder, with spirit level. Wire view finder, with sight. Infinity stop with automatic release. Tripod sockets. 3 metal slides covered with leather.

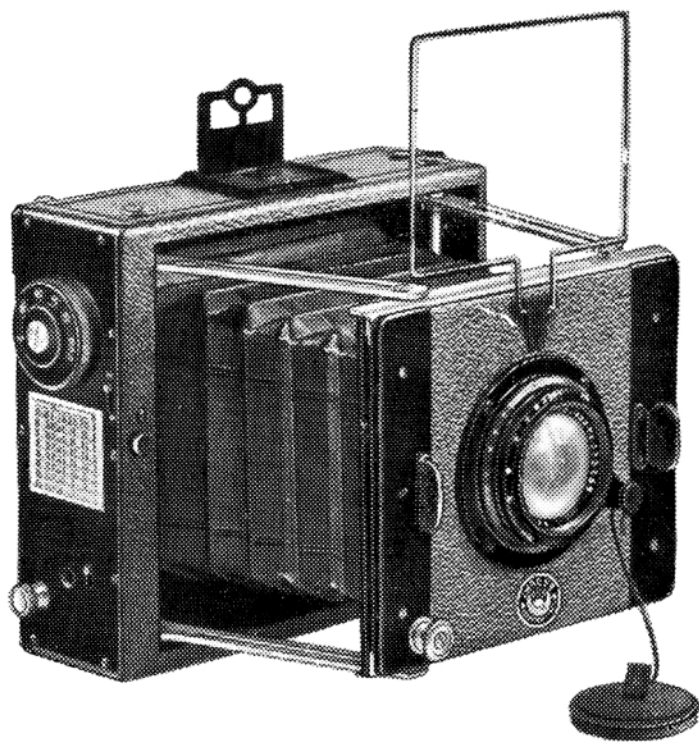
No.	No. 1010, $3\frac{1}{2} \times 2\frac{1}{2}$. Lens Focus 10.5 cm.	Prices		
		£	s.	d.
1010 MSC	Ihagee Anastigmat F/4.5	17	15	0
1010 TSC	Hugo Meyer Double Anastigmat Veraplan, F/4.5	19	0	0
1010 ZSC	Zeiss Tessar F/4.5	20	0	0
1010 QSC	Zeiss Tessar F/3.5	23	10	0
—	Extra Slides, leather covered	0	3	6
—	Film Pack Adapter, leather covered	0	10	0
—	Leather Case, velvet lined, with lock and key	1	10	0

No.	No. 1020, 9×12 cm. or $\frac{1}{4}$ plate. Lens Focus 13.5 cm.	Prices		
		£	s.	d.
1020 MSC	Ihagee Anastigmat F/4.5	21	0	0
1020 TSC	Hugo Meyer Anastigmat Veraplan F/4.5	22	15	0
1020 ZSC	Zeiss Tessar F/4.5	24	0	0
*1020 QC	Zeiss Tessar F/3.5	30	0	0
—	Extra Slides, leather covered	0	4	6
—	Film Pack Adapter, leather covered	0	12	6
—	Leather Case, velvet lined, with lock and key	2	5	0

* The Compur Shutters for F/3.5 lenses are not fitted with delayed action.

· IHAGEE CAMERAS ·

Sport and Press Camera



FOR PLATES AND FILM PACKS

The Best Camera for Sport and Press Photographs. Simple in construction. Reliable in action.

One touch and the camera is ready for work and sharply focussed at infinity. Close focussing is done by the focussing mount of the lens.

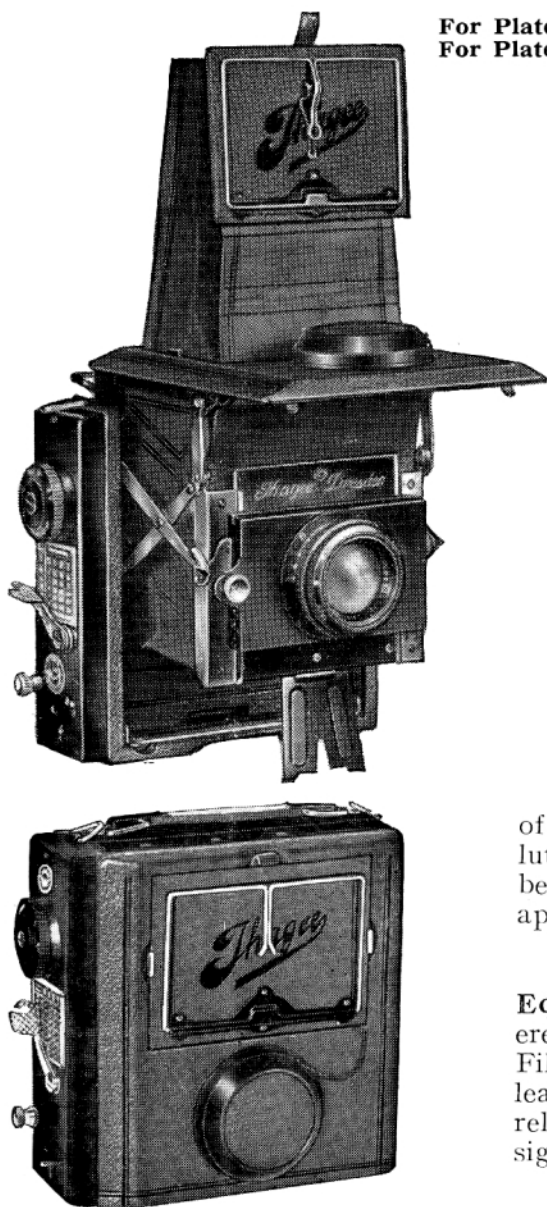
Body covered with real leather. Metal lens panel, with rising movement. Focal plane shutter for time, "bulb" and instantaneous exposures of 1/15th to 1/1,000th second. **Self-capping blind works without vibration.** **Direct vision finder, with sight.** 3 metal slides in case. Tripod sockets.

No.	No. 1810, 3½ × 2½. Lens Focus 12 cm.							Prices		
								£	s.	d.
1810 M	Ihagee Anastigmat F/4.5	17	0	0
1810 P	Ihagee Trioplan F/3.5	22	10	0
1810 Z	Zeiss Tessar F/4.5	24	10	0
1810 Q	Zeiss Tessar F/3.5	28	0	0
—	Extra Slides	each	0	2	3
—	Film Pack Adapter	0	8	6
—	Leather Case, velvet lined, with lock and key	1	10	0

No.	No. 1820, 9 × 12 cm. or ¼ plate. Lens Focus 15 cm.							Prices		
								£	s.	d.
1820 M	Ihagee Anastigmat F/4.5	20	5	0
1820 P	Ihagee Trioplan F/3.5	27	0	0
1820 Z	Zeiss Tessar F/4.5	29	15	0
1820 Q	Zeiss Tessar F/3.5	36	10	0
—	Extra Slides	each	0	2	6
—	Film Pack Adapter	0	10	0
—	Leather Case, velvet lined, with lock and key	2	5	0

IHAGEE CAMERAS

Patent Folding Reflex for Sports, Press and Advanced Amateurs



For Plates and Film Packs $3\frac{1}{2} \times 2\frac{1}{2}$ — $6\frac{1}{2} \times 9$ cm.
For Plates and Film Packs $4\frac{1}{4} \times 3\frac{1}{4}$ — 9×12 cm.

The Ihagee Patent Folding Reflex is only slightly larger than an ordinary folding camera. It can be opened ready for exposure with one movement and at the same time is automatically focussed for "infinity."

The patent shutter, giving speeds from 1/15th to 1/1000th second, has a covered mechanism, a self-capping blind and works entirely without vibration.

The mirror rests on a base, thus ensuring that it maintains an angle of 45° .

Covered with best morocco leather and fitted with leather bellows, the Ihagee Patent Folding Reflex is an instrument of the very highest class, absolutely rigid when extended. It is beautifully finished and of elegant appearance.

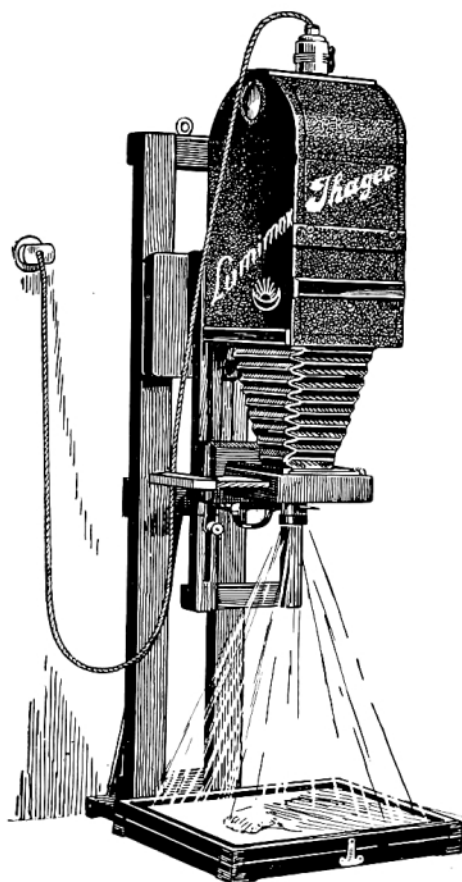
Equipment: 3 metal slides, covered with leather, in leather case. Film pack adapter covered with leather. Shoulder strap. Patent release. Wire view finder, with sight.

No.	No. 1110, $3\frac{1}{2} \times 2\frac{1}{2}$, Lens Focus 12 cm.	Prices
1110 T	Hugo Meyer Double Anastigmat Veraplan F/4.5	£ 32 15 0
1110 Z	Zeiss Tessar F/4.5	40 0 0
—	Extra Slides, leather covered	0 3 6
—	Leather Case, velvet lined, with lock and key	1 10 0
No.	No. 1120, 9×12 cm. or $\frac{1}{4}$ plate, Lens Focus 15 cm.	Prices
1120 T	Hugo Meyer Double Anastigmat Veraplan F/4.5	£ 40 0 0
1120 Z	Zeiss Tessar F/4.5	46 10 0
—	Extra Slides, leather covered	0 4 6
—	Leather Case, velvet lined, with lock and key	2 5 0

These cameras can be fitted with revolving back for upright or oblong pictures at an extra cost of
 $3\frac{1}{2} \times 2\frac{1}{2}$ £4 10 0, 9×12 or $\frac{1}{4}$ -plate £8 0 0

• IHAGEE CAMERAS •

Universal Lumimax Enlargers



These Enlargers are the most practical and economical of any on the market. They have been designed after long experience of the requirements of amateurs and professionals, and will be found perfectly efficient and convenient to use.

The Lamp House is of a perfect shape for reflecting the light on to the negative by means of the white interior. There is a bellows body on sliding rails, and the lens support is further fitted with rack and pinion for fine focussing.

The extension is sufficiently long to make reductions. There is also an exposing slide with a ruby screen in it, for focussing direct on to the bromide paper. They may be used horizontally or hung on the dark room wall for vertical work.

Hinged Glass Front Printing Frames to take up to 12×10 for $3\frac{1}{2} \times 2\frac{1}{2}$ size and 15×12 for $4\frac{1}{4} \times 3\frac{1}{4}$ (included in price). (Lamp extra.)

Fitted with **Ihagee Anastigmat F/6.8 or F/4.5.**

No.		£ s. d.
5310	For $3\frac{1}{2} \times 2\frac{1}{2}$ in. Complete with F/6.8 Anastigmat ..	6 0 0
5311	Do., with F/4.5 Anastigmat ..	6 15 0
5320	For $4\frac{1}{4} \times 3\frac{1}{4}$ in., with F/6.8 Anastigmat ..	6 5 0
5321	Do., with F/4.5 Anastigmat ..	7 10 0

PROFESSIONAL MODEL

For Negatives or Films up to $\frac{1}{2}$ -plate

The Professional Lumimax is made for trade workers. Is constructed to accommodate two lamps with independent switches, so that certain parts of the negatives may be illuminated for a longer time.

No.		£ s. d.
5340H	Complete with F/6.8 Anastigmat and Flex (without Lamps) ..	10 10 0
5340M	Ditto, ditto, F/4.5 Anastigmat ..	12 10 0
—	Carriers. $\frac{1}{2}$ -plate to $\frac{1}{4}$ -plate, 2/6 ; $\frac{1}{4}$ -plate to $3\frac{1}{2} \times 2\frac{1}{2}$, 1/6 ; $3\frac{1}{2} \times 2\frac{1}{2}$ to V.P.K. ..	0 1 6
5546	Hinged Front Glass Printing Frame up to 12×10 ins. .. extra	0 16 6
5547	Ditto, up to 15×12 ins. ..	1 1 0

Simplex Lumimax

Is similar to the Universal, but without the bellows and lens, being arranged for use with own camera. Prices include the Enlarger with baseboard, flex, plug and switch (lamp and printing frame extra).

No.		£ s. d.
5750	For Autolette and Weeny-Ultrix Cameras	3 3 0
5210	For $3\frac{1}{2} \times 2\frac{1}{2}$ in. Cameras	2 10 0
5220	For $4\frac{1}{4} \times 3\frac{1}{4}$ in. (9 x 12 cm.) Cameras	2 12 6

Lamps, 75 watt extra 4/-

State voltage when ordering

· IHAGEE CAMERAS ·

The Scotia Floodlight Reflector with Diffusion Screen

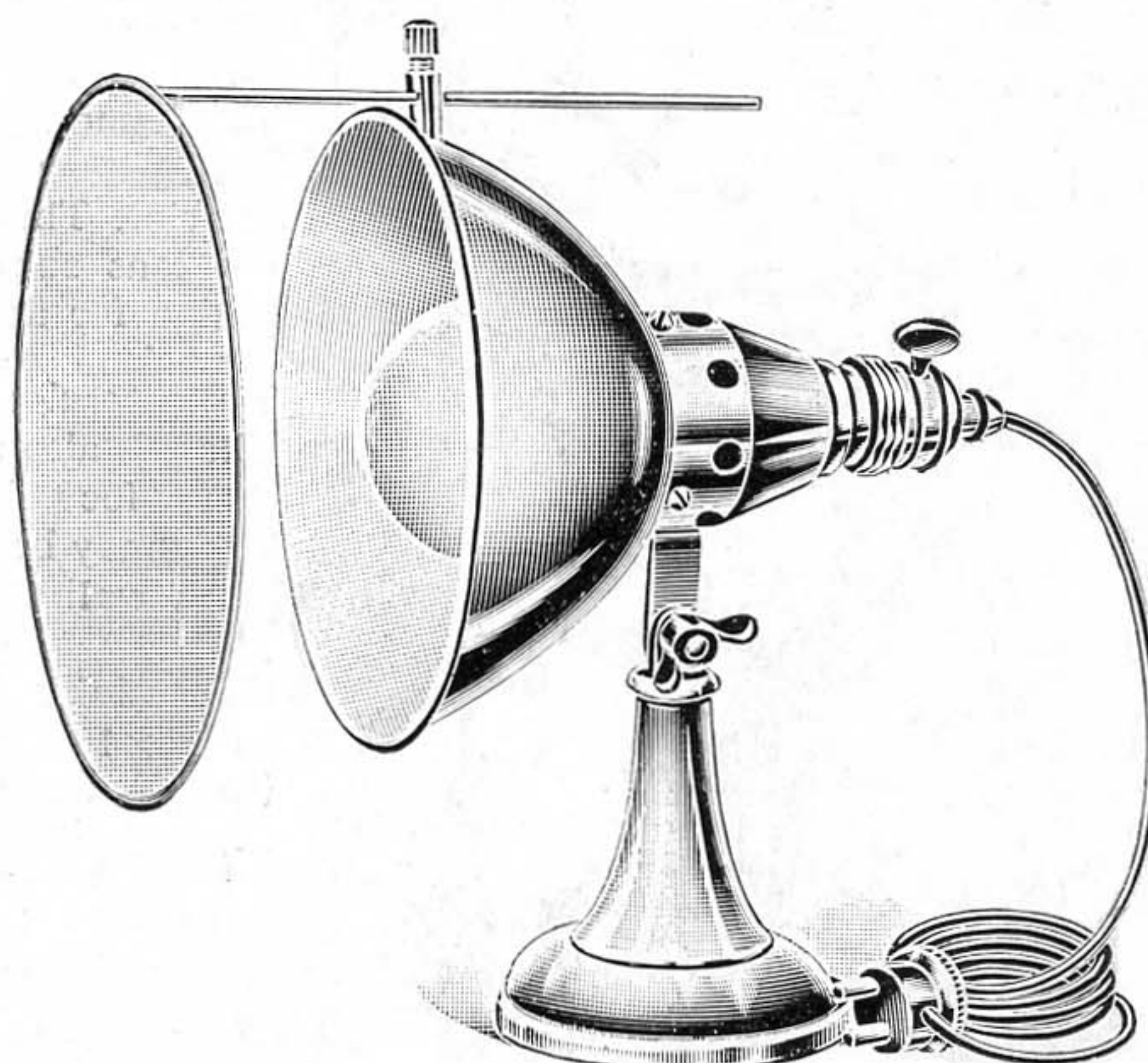
For Cine Pictures and Portraits at Home

The most efficient of all Reflectors for use with Nitraphot Lamps. Polished aluminium body, the curve of which is accurately and scientifically calculated to give best results.

On hinged foot, which can be clamped in any position, and fitted with a Tripod Bush, enabling it to be used on a stand. Also a "Key Slot" for hanging on wall.

Switch with 8 feet heavy flex and plug.

Price 27/6 each



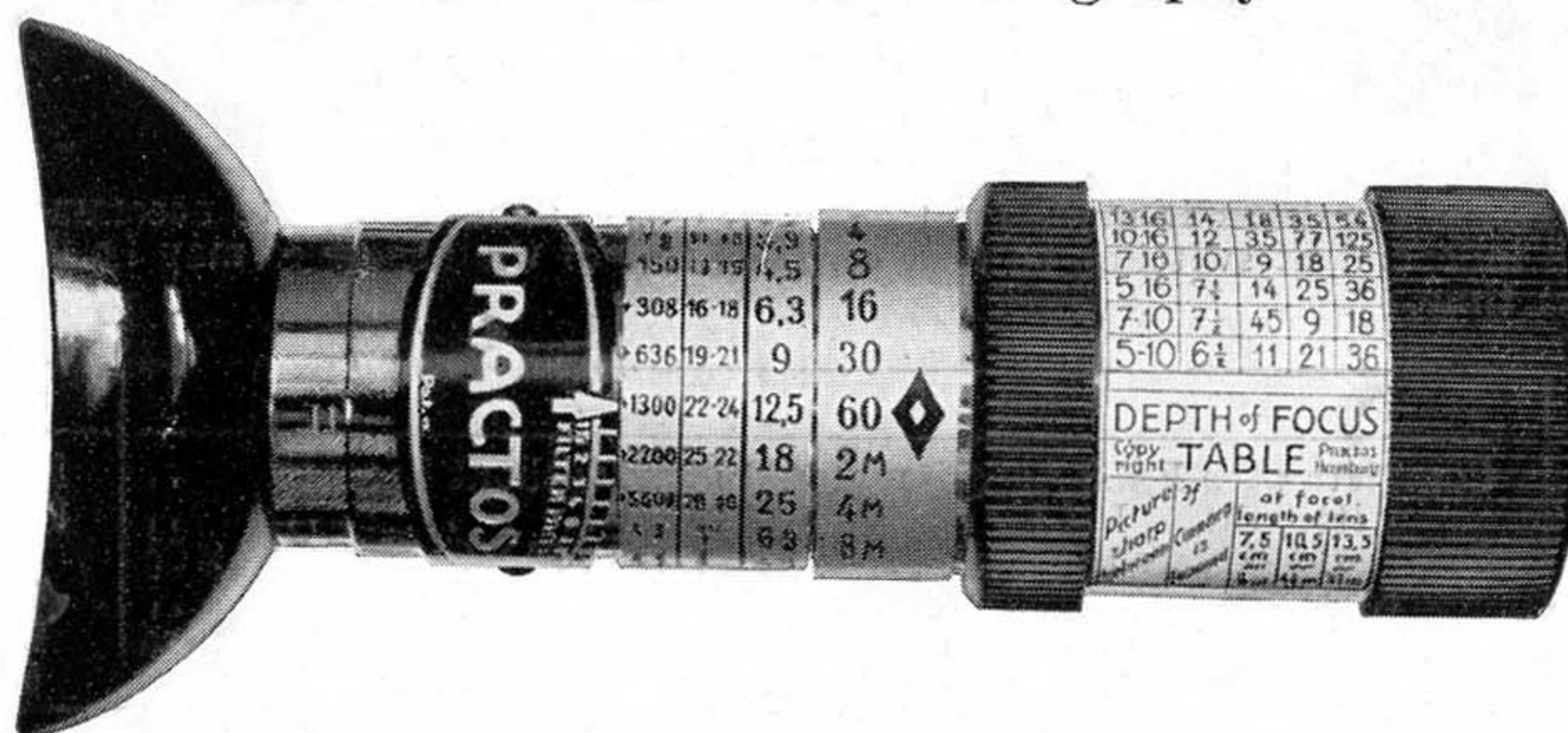
BRITISH MADE

Nitraphot Lamp, 500 watts, extra 23/6. State voltage with order.

Enamelled Iron Folding Telescopic Stand, with Screw for fitting in base of Reflector.
Height fully extended 70 inches Price each 12/6

'Practos' Exposure Meter

For Still and Cine Photography



The Practos is the latest, most interesting and most efficient of this type of Exposure Meter. It is so simplified that after adjusting the Eyepiece to suit one's vision, it is only necessary to look through it and turn the rotating ring until the figure on the left is obliterated, when the actual exposure desirable will appear on the right hand side.

It is the only instrument containing a properly constructed darkening screen (patented) so that it corresponds to the physiological character of the eye.

The Plate and Film speeds are expressed both in H. and D. and Scheiner values.

For Filters, the factors from 1½ to 12 times are engraved on the scale.

There is also a depth of focus table attached to the tube of the Meter, so that one has at hand all the calculations likely to be useful.

The Special Model for Cine Cameras.—This functions in a similar manner to that for Still pictures, but the scales are arranged so that the desired stop is shown on the scale against the speed of the cameras.

The "Practos" is beautifully made and finished, and delivered complete with Instructions in a leather pouch.

Price 21/- each (either model)

State model required when ordering.