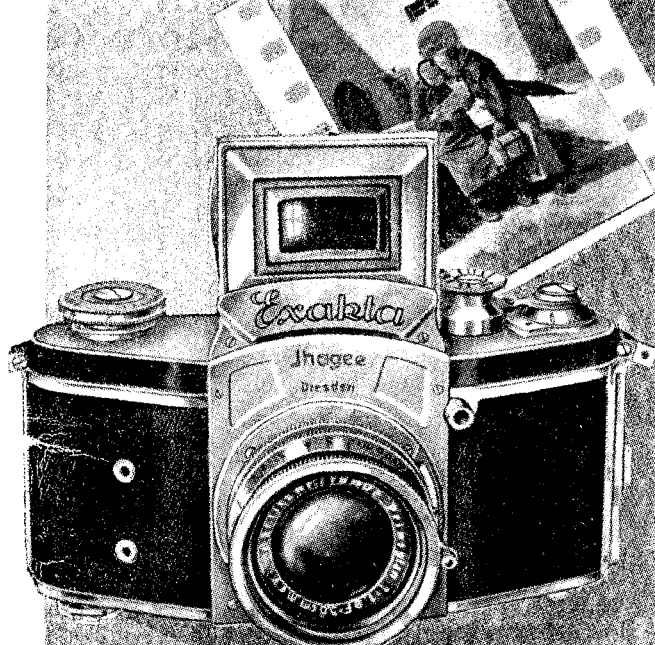


EXAKTA

The most versatile Miniature Focal Plane Reflex

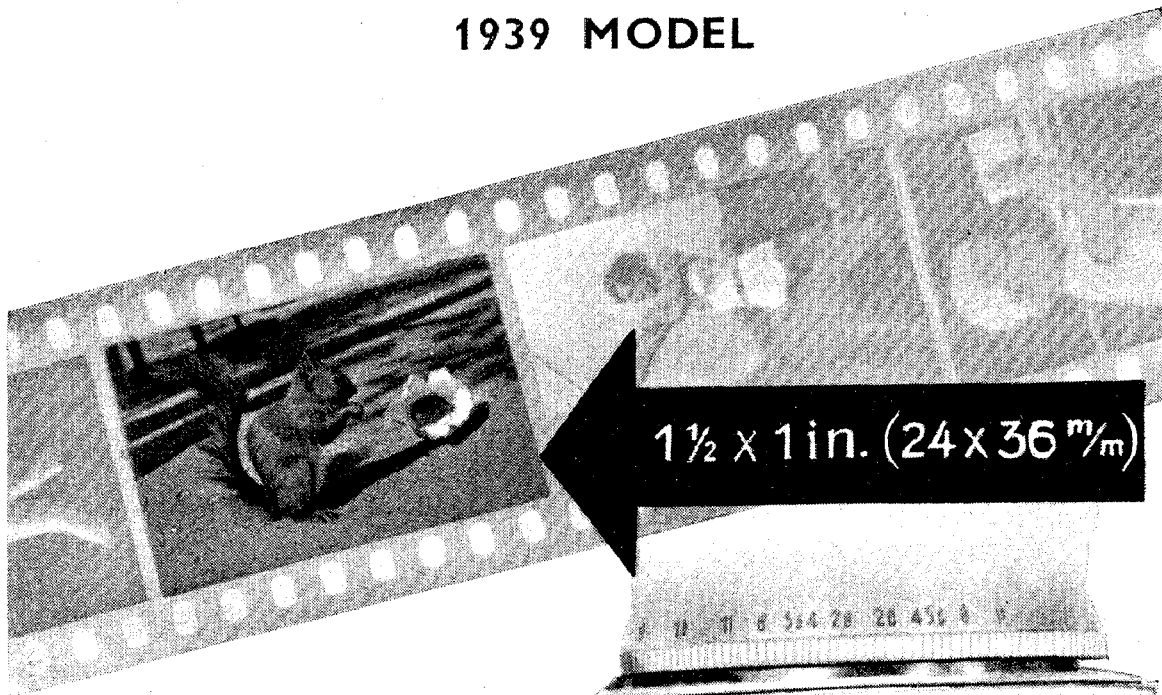
Kine-Exakta :
takes pictures
24 × 36 mm.
(1½" × 1")



Standard-Exakta : takes pictures
4 × 6.5 cm. (2½" × 1⅝")

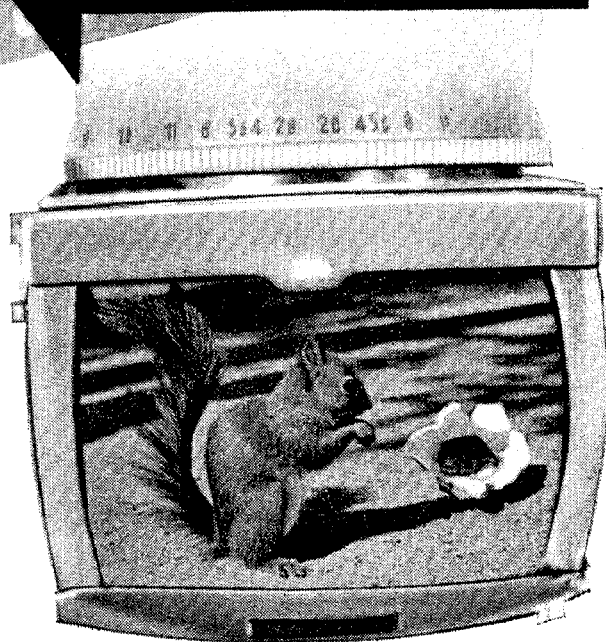
KINE-EXAKTA

1939 MODEL

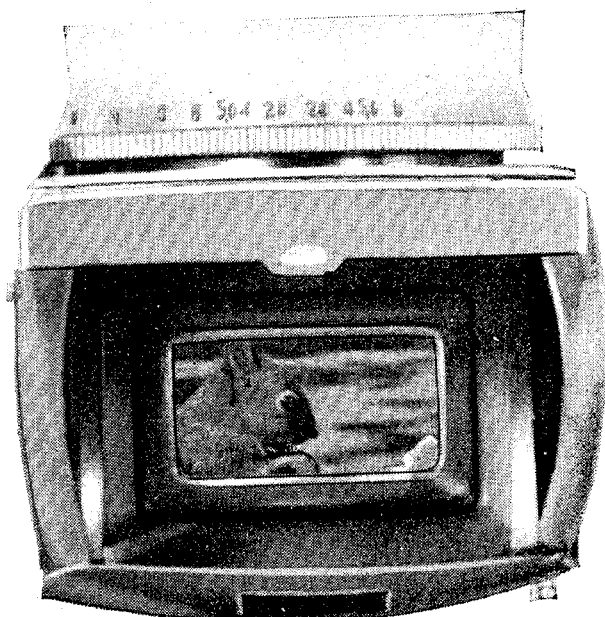


The KINE-EXAKTA

... is a single-lens reflex camera, the lens forming the image in the camera produces the focussing image on the ground-glass screen. Because of this fact, the ground glass shows an image that is always identical with that to be taken later by the camera, and one may focus on any object seen, observe depth of focus critically, and compose the scene, in full confidence that what appears there will be seen in the negative. To ensure reliability in focussing, the image seen is automatically enlarged by a magnifier, while a supplementary magnifier is included in the front of the finder hood, by means of which the central portion of the image can be viewed in still greater enlargement. Therefore the greatest accuracy in focussing becomes quite simple, and negatives are produced which will stand almost any degree of enlargement. (The illustrations show the enlargement of the focussed image by the magnifiers.) *Another important point :* The enlarged image seen is in its full colours, permitting an exact examination of the colour composition. For all those who are interested in colour work, the Kine-Exakta is the camera par excellence.



Approximate size of normal focussing image on ground glass



The effect of the supplementary magnifier

KINE-EXAKTA

1939 MODEL

Some of the technical advantages incorporated in the **KINE-EXAKTA are—**

Unified control by single winding lever (Fig. 1) gives the camera a strikingly rapid action, and promotes readiness for use in the shortest space of time.

A single push (Fig. 2) moves the winding lever across to the left, and this movement winds up the shutter, moves on the film to the next picture, sets the

reflex mirror inside the camera, and turns on the picture counter to the next number. The moment the winding lever is released, it springs back to its original position.

The picture counter (Fig. 1 and 2) is placed so that it can readily be seen from above when the camera is being used.

An exceedingly wide range of automatic shutter speeds is given by the Exakta focal plane shutter, the controls of which are also on top of the camera. The shorter exposures between $1/25$ and $1/1000$ th of a second, which serve for amateur snapshots and for rapid work on the fastest moving objects, are set by a single knob (Fig. 1 & 2). A further control knob (Fig. 3)

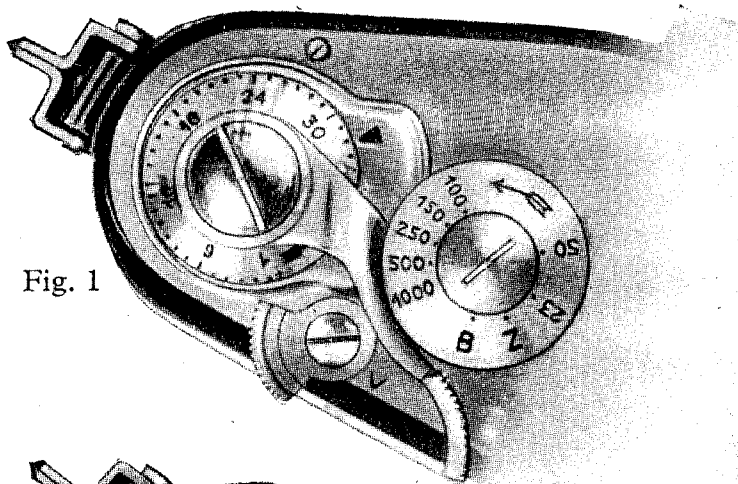


Fig. 1

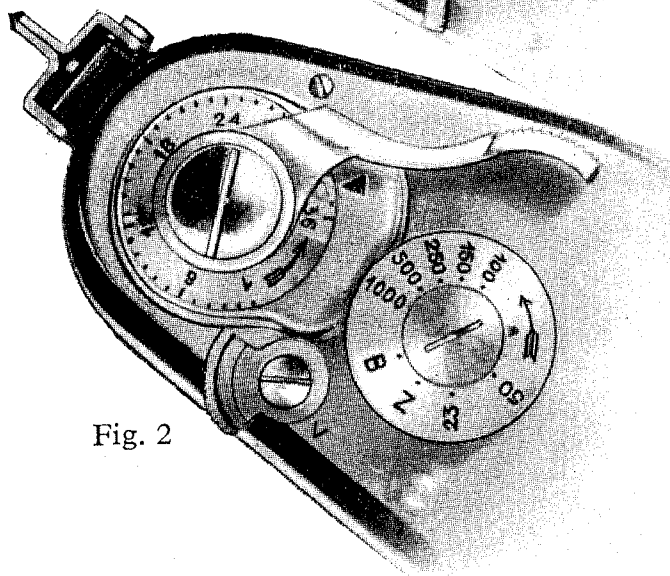


Fig. 2

gives the longer exposures between $1/10$ th sec and 12 full secs., and covers the times required for photography in the streets at night, in the theatre or at home in ordinary room lighting. A built-in delayed action shutter release (Fig. 3) can be used with any exposure time between $1/1000$ th of a second and 6 full seconds.

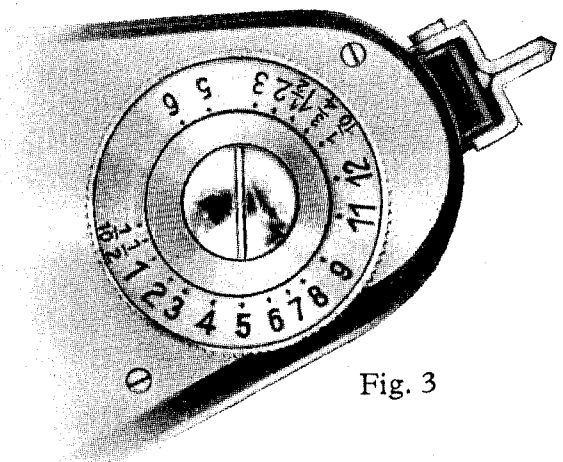


Fig. 3

KINE-EXAKTA

1939 MODEL

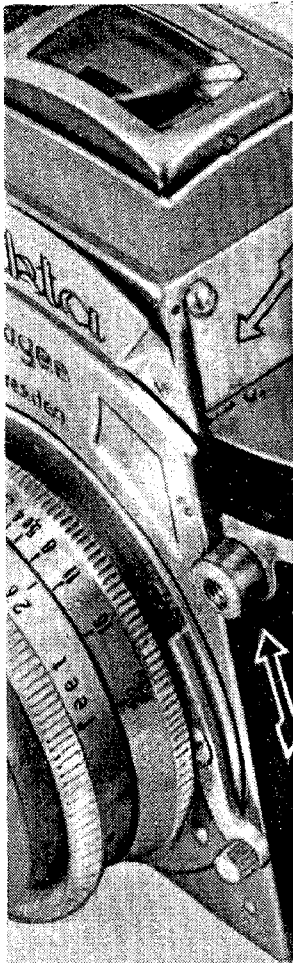


Fig. 4

The automatic safety lock (Fig. 4) makes it impossible to expose the film accidentally. When the finder hood is closed, the shutter cannot be released, so that as long as the subject to be taken cannot be seen in the view-finder, no exposure can be made.

The Kine-Exakta is also provided with a very useful and exclusive feature; there is no need to wait until all 36 exposures have been made, for a small knife (Fig. 5) inside the camera can be used to cut off the exposed section of the film and allow it to be given immediate development.

The depth of focus problem—a very real one in a miniature camera with an ultra-fast lens—is dealt with in the view-finder of the Kine-Exakta, but where rapid snapshot work is to be done a glance from above at the lens will indicate the depth of focus, for a special scale is provided on the focussing mount. By means of this scale (Fig. 6) the lens may be focussed to give any necessary depth of focus at a pre-determined aperture.

To supplement the advantages given by the camera, a special cassette (Fig. 7) is available.

This is loaded with ordinary cinema film, 35 mm. wide, which gives the lowest possible cost of negative material and allows film strips of any length up to 36 pictures to be used in the camera.

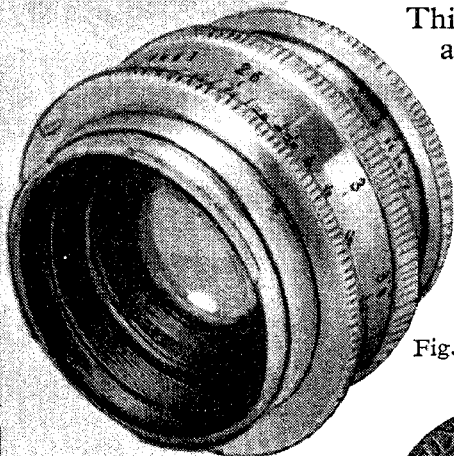


Fig. 6

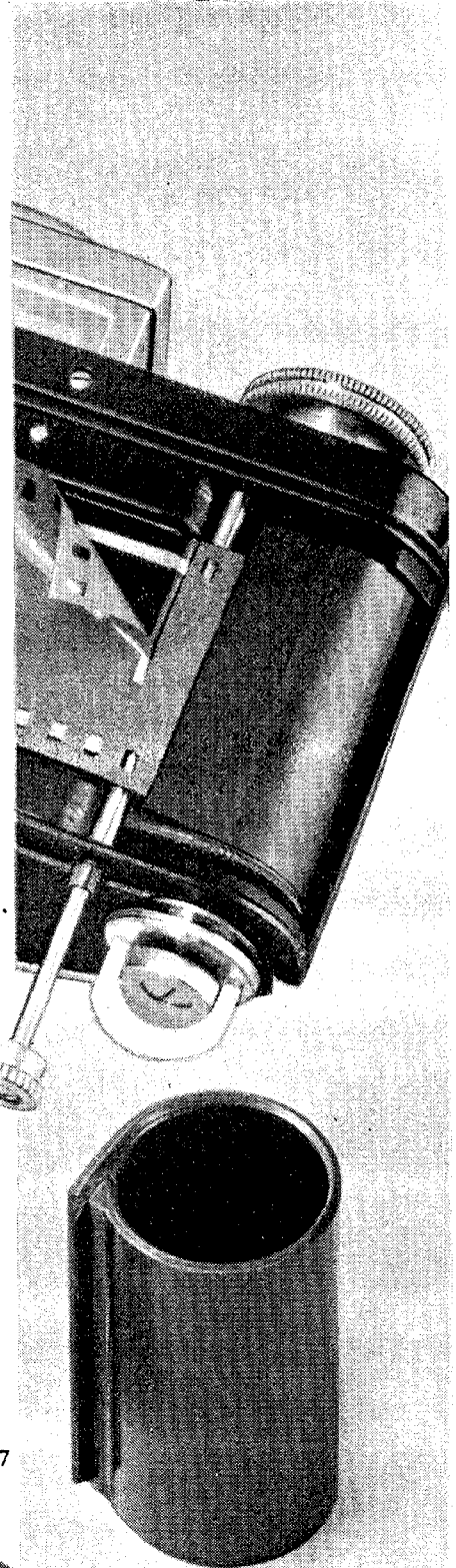
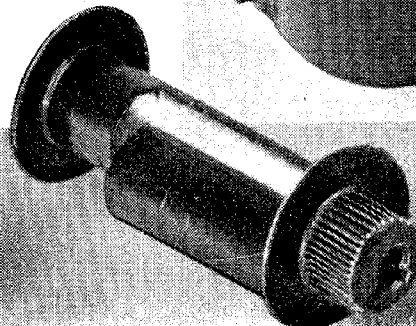
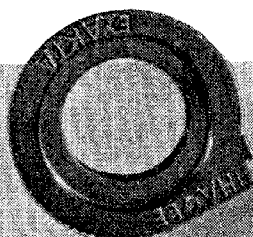


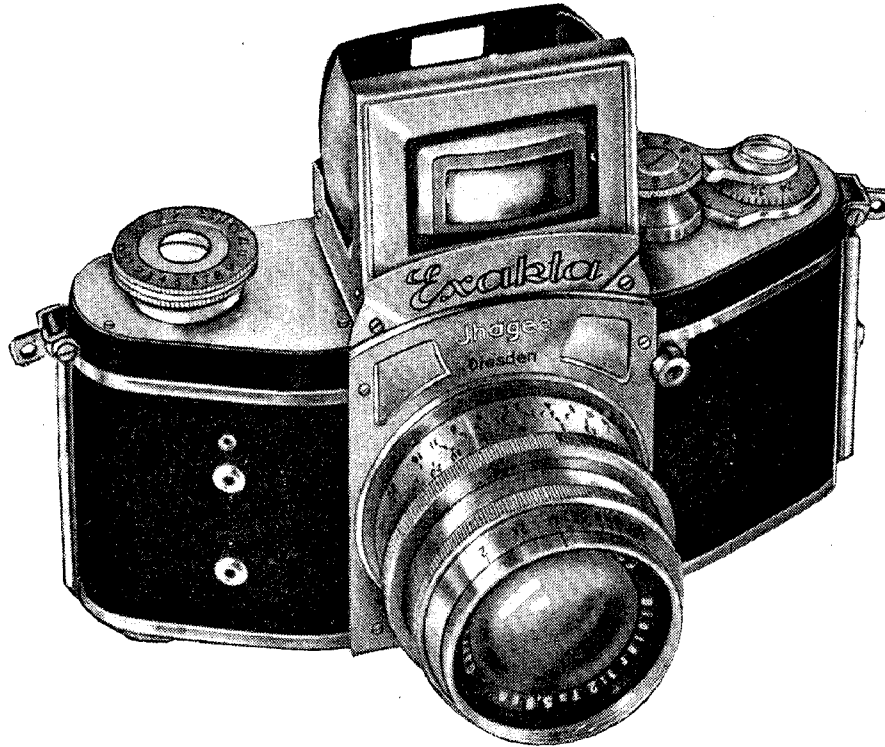
Fig. 5

Fig. 7



KINE-EXAKTA

The Kine-Exakta is popular among both amateurs and professionals, and is specially useful for those who make many exposures and who like series of pictures: once loaded it takes 36 exposures on 35 mm. perforated film which is low in cost.



Die-cast light metal body ; folding finder hood opening by pressure on a button ; frame finder ; built-in ground glass screen and combined magnifier ; second accessory magnifier for critical focussing ; rewinding and film-cutting devices ; mechanical inter-connection between shutter and film wind ; picture counter to 36 exposures. Focal-plane self-capping shutter, giving exposures between 12 seconds and 1/1000th second normally and 6 seconds and 1/1000th second with delayed action mechanism. The Delayed Action Control allows 12 seconds to elapse after the release has been pressed before the shutter operates. Interchangeable lenses in bayonet fitting. Precision helical focussing from infinity to 3 feet. Automatic shutter lock, which only allows the shutter to be released when the finder hood is erect. Tripod bush, leather neck sling, flexible wire release and connection sockets for flash-bulb work included.

Measurements : 6 × 3 $\frac{1}{4}$ × 3 ins. Weight : 35 ozs.

Prices :				£	s.	d.
8140 BR	Exaktar Anastigmat	<i>f</i> /3.5	focus 2 $\frac{1}{8}$ in. (5.4 cm.)..	..	27	10 0
8140 Q	Zeiss Tessar ..	<i>f</i> /3.5	.. 2 .. (5 ..)..	..	34	10 0
8140 E	<i>f</i> /2.8	.. 2 .. (5 ..)..	..	38	10 0
8140 PL	Hugo Meyer Primoplan	<i>f</i> /1.9	.. 2 $\frac{1}{4}$.. (5.8 ..)..	..	45	0 0
8140 LR	Zeiss Biotar ..	<i>f</i> /2	.. 2 $\frac{1}{4}$.. (5.8 ..)..	..	55	0 0
8140 O	Schneider Xenon ..	<i>f</i> /2	.. 2 .. (5 ..)..	..	45	0 0

KINE-EXAKTA ACCESSORIES

	£	s.	d.
Ever-ready Carrying Case	1	0	0
Attaché-shape Case, strongly sewn and well finished, for camera and complete range of accessories, with good lock and key	3	3	0
Wide Angle Lenses : Meyer Wide Angle Anastigmat $f/4.5$, focal length $1\frac{9}{16}$ in. (4 cm.)	14	14	0
Tessar Wide Angle $f/4.5$, focal length $1\frac{9}{16}$ in. (4 cm.)	18	0	0
Case for same	10	0	
„ „	10	0	

Long Focus and Telephoto Lenses :

Telephoto Lens "Dallan" $f/5.6$, 4 in.	7	10	0
„ „ „ $f/5.6$, 6 in.	10	15	0
Primoplan $f/1.9$, focal length 3 in. (7.5 cm.)	27	0	0
Triotar $f/4$, focal length $3\frac{3}{8}$ in. (8.5 cm.)	20	0	0
Trioplan $f/2.8$, focal length $4\frac{1}{4}$ in. (10.5 cm.)	16	0	0
„ $f/4.5$, „ „ $4\frac{3}{4}$ in. (12 cm.)	14	0	0
Triotar $f/4$, focal length $5\frac{3}{8}$ in. (13.5 cm.)	22	10	0
Tele-Megor $f/5.5$, focal length 6 in. (15 cm.)	16	0	0
„ „ $f/5.5$ „ „ $7\frac{1}{8}$ in. (18 cm.)	20	0	0
Tele-Tessar $f/6.3$, focal length $7\frac{1}{8}$ in. (18 cm.)	31	10	0
Tele-Megor $f/5.5$, focal length 10 in. (25 cm.)	30	0	0
Tele-Tessar $f/6.3$, focal length 10 in. (25 cm.)	39	10	0
Zeiss Long Distance Lens $f/8$, focal length 20 in. (50 cm.)	75	0	0
Supplementary Lenses, near or tele type* : 32 mm. Ø	10	6	
„ „ „ „ * 42 mm. Ø	16	6	

*The distance rings listed below are necessary with tele lenses.

Extension Tube C (0.5 cm.), chrome plated	8	6	
„ „ B (3 cm.), chrome plated	8	6	
Pair of Distance Rings (essential with extension tubes to fit the latter to the bayonet joints of lens and camera)	1	0	0
Special Extension Ring D for exposures between about 16 to 25 inches	1	10	0
Lens Hood, mount 32 mm. Ø	7	6	
„ „ 42 mm. Ø	10	6	
Filters in Yellow, Green, Blue and Red grades, mount 32 mm. Ø	12	6	
„ „ „ „ 42 mm. Ø	1	5	0
Duto Soft-focus Disc, Grade 0 or 1, mount 32 mm. Ø	1	10	0
„ „ „ „ 42 mm. Ø	2	0	0
Bernotar Polarisation Filter, mount 32 mm. Ø	3	12	6
„ „ „ „ 42 mm. Ø	4	10	0
Aviator's Shutter Release	2	0	
Finder Hood Extension with Magnifier built in	17	6	
Exakta Miniature Tripod with ball and socket head, in 12 sections (closed 8 in., open 46 in.)	3	0	0
Ball and Socket Head (needed for upright pictures from a tripod)	6	6	
Micro-Attachment	4	10	0
Large Flash-bulb Synchroniser Outfit	2	5	0
Reproduction Stand	6	15	0
Extension Piece for pillar of reproduction stand	1	10	0
Kine-Exakta Cassette, with Pan. film 36 exposures	3	6	
„ „ Lumimax Enlarger, no condenser or lens, with baseboard and metal pillar	6	0	0
Kine-Exakta Lumimax Enlarger with condenser, no lens, with baseboard and metal pillar	8	0	0
Lumimax Projector-Enlarger, complete with baseboard and pillar, no lens	11	11	0

STANDARD EXAKTA

Models A, B and C

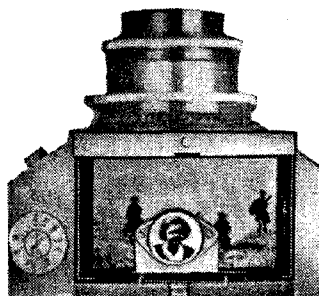


The Standard Exakta Camera is built to the same basic design as the Kine-Exakta in previous pages. Both are Focal Plane Shutter Reflex Cameras having a single lens which is used to form both an image on the ground glass focussing screen and to produce the actual image on the film in the camera back. As the camera is set a mirror is introduced into the path of the light from the lens to the film, diverting it to the focussing screen, and precisely the same focus and depth of focus is seen here as will appear in the negative image. The image on the screen is the right way up and before the actual exposure is made focus and depth of focus can be checked and adjusted and the composition of the picture arranged to give the best possible effect. Since the focussing screen image is identical with that taken by the camera, it is always a completely reliable indication of the field covered, irrespective of when normal, Tele, Wide Angle, Supplementary Lenses or Extension Tubes are in use. Parallax error does not exist in the Exakta Cameras.

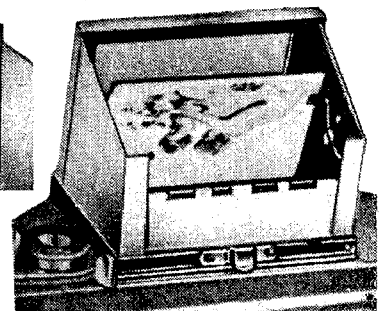
The Finder Hood of the Exakta can be converted into a Direct Vision Finder, as shown in Fig. B. Press photographers will find the Exakta specially useful, for it may be held above the head upside down and the image composed and focussed as usual (Fig. C). For upright pictures of detective and street studies the camera points at right angles to the direction in which the photographer is apparently looking and it is possible to get pictures without being observed (Fig. D.)

A Supplementary Magnifier built into the focussing hood can be used for ultra-critical focussing and shows a considerably enlarged portion of the subject to be photographed (Fig. E).

The front inner portion of the finder hood is a metal mirror and this can be bent backwards and the image can then be seen at eye level (Fig. F).



E

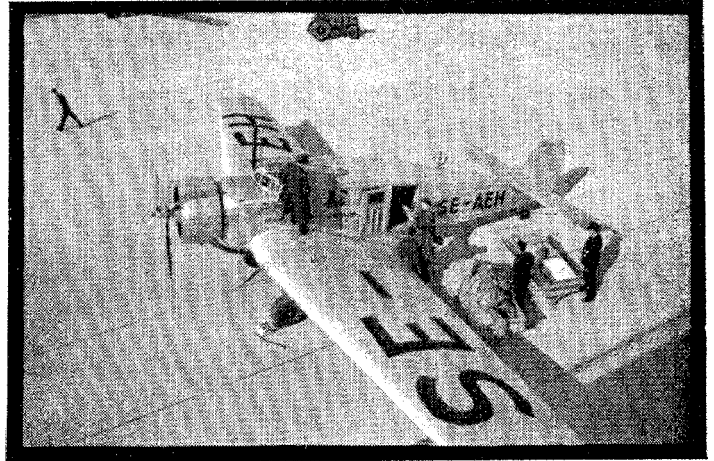
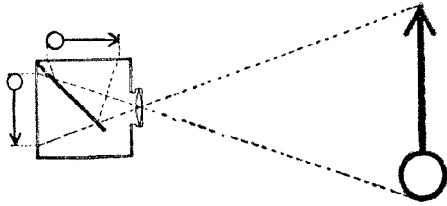


F

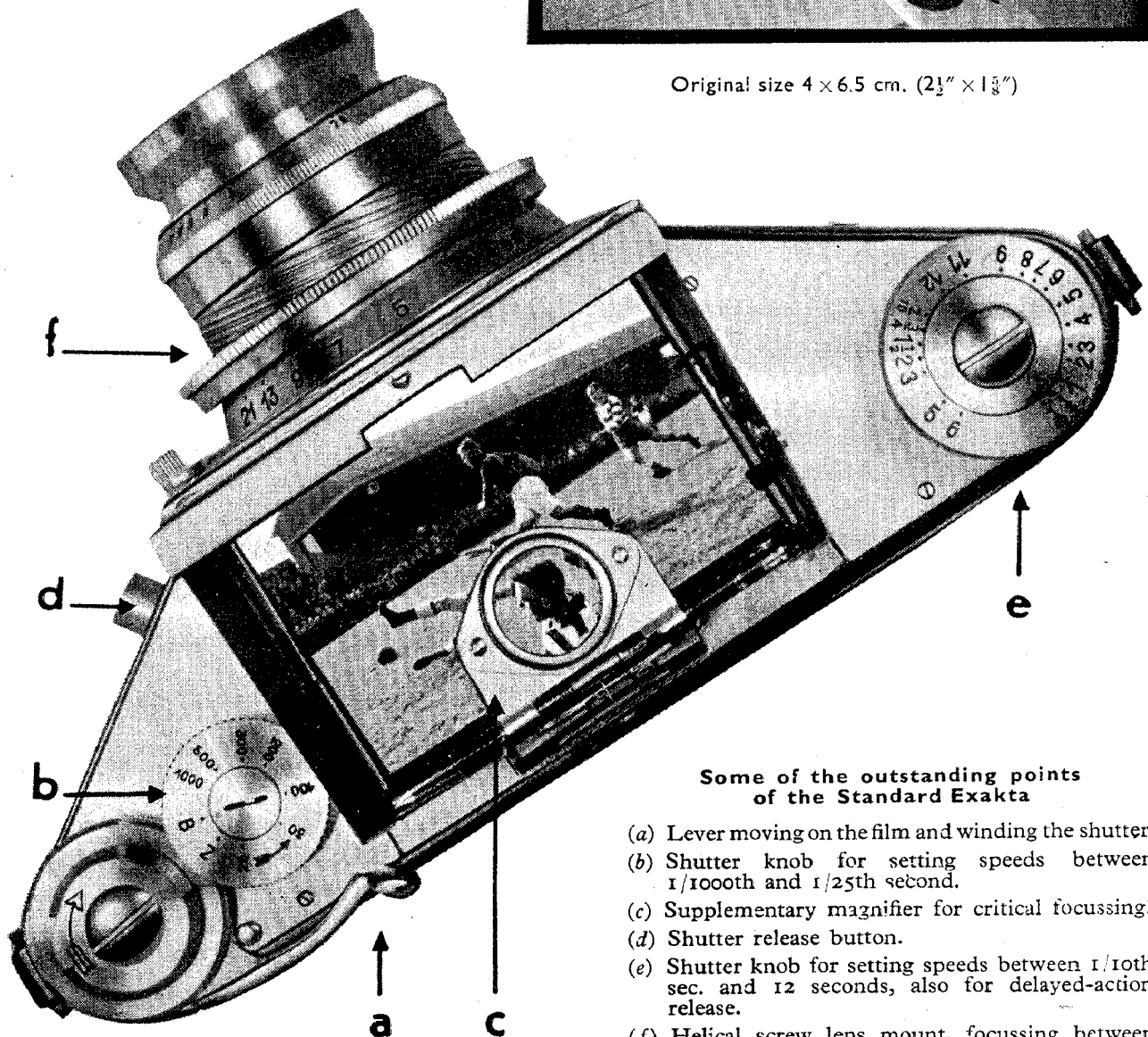
Standard Multi-Speed Exakta

taking V.P. roll-films—8 exposures 4×6.5 cm., $2\frac{1}{2} \times 1\frac{5}{8}$ in.

With the Exakta Focal Plane Reflexes there is no parallax. The picture seen in the top screen is the same as that which will appear on the film, identical in all respects. No cutting off heads or feet and no allowances to be made.



Original size 4×6.5 cm. ($2\frac{1}{2}'' \times 1\frac{5}{8}''$)



Some of the outstanding points of the Standard Exakta

- (a) Lever moving on the film and winding the shutter.
- (b) Shutter knob for setting speeds between $1/1000$ th and $1/25$ th second.
- (c) Supplementary magnifier for critical focussing.
- (d) Shutter release button.
- (e) Shutter knob for setting speeds between $1/10$ th sec. and 12 seconds, also for delayed-action release.
- (f) Helical screw lens mount, focussing between infinity and 3 feet.

Standard Multi-Speed Exakta

For V.P. Roll Films

4 × 6.5 cm. (2½ × 1⅝ in.)

MODEL B

DE LUXE CHROMIUM PLATED



This represents the most popular equipment of the Exakta. Instantaneous exposures of highest speeds from 1/25th to 1/1,000th second. Short and long time exposures from 1/10th, ½ to 12 seconds. Delayed action release for exposures from 1/1,000th to 6 seconds.

The Delayed Action Control allows 12 seconds to elapse after the release has been pressed before the shutter operates.

Body made entirely of metal, leather covered, with spring safety cover to the film-recording aperture for use with Panchromatic films, and fitted with Tripod Bush and Cable Release.

Size overall 6 × 3 × 2¾ ins. Weight, approximately, 26 ozs., according to lens fitted.

			£	s.	d.
8150 BBR	Fitted with Exaktar Anastigmat <i>f</i> /3.5, focal length 7.5 cm.	21	0	0
8150 BN	„ „ Schneider Xenar <i>f</i> /3.5, focal length 7.5 cm.	23	15	0
8150 BQ	„ „ Zeiss Tessar <i>f</i> /3.5, focal length 7.5 cm.	25	10	0
8150 BAX	„ „ Schneider Xenar <i>f</i> /2.8, focal length 7.5 cm.	27	15	0
8150 BE	„ „ Zeiss Tessar <i>f</i> /2.8, focal length 7.5 cm.	29	10	0
—	Brown Leather Ever-ready Case for camera	1	0	0
—	Pig-skin Ever-Ready Case for camera	1	10	0
—	Square Form Solid Leather Case for camera, telephoto lens and filters	1	5	0
—	Brown Leather Attaché-shape Case, strongly sewn and well finished, for camera and full range of accessories, with good lock and key	3	3	0

For interchangeable lenses and other accessories see page 13.

Multi-Speed Night Exakta

With Large Aperture Lenses

MODEL B

For V.P. Roll Films

4 × 6.5 cm. (2½ × 1⅝ in.)

DE LUXE MODEL. CHROMIUM PLATED



The lenses of the "Night Model" Exakta have naturally been specially designed with an eye to the maximum possible aperture value, but the definition given by such lenses still remains exceedingly satisfactory even at their full working aperture. Such ultra-rapid lenses are essential for photography in the streets at night, or where artificial light—or even weak light of any kind—must be used for exposure.

The Primoplan lens is a five-component unsymmetrical anastigmat ; the Xenon a six-component unsymmetrical anastigmat. The Biotar is also a six-component anastigmat having the advantage that the front combination alone can be used in conjunction with a special extension tube which increases the focal length to 155 mm. at an aperture of $f/5$. This necessitates the iris stop to be altered to $f/2.8$.

		£	s.	d.
8150 P.L.	Fitted with Hugo Meyer Primoplan $f/1.9$, focal length 8 cm.	42	0	0
8150 O.	„ „ Schneider Xenon $f/2$, focal length 8 cm.	42	0	0
8150 S.S.	„ „ Dallmeyer Super Six $f/1.9$, focal length 3¼ ins. (8 cm.)	37	10	0
8150 L.R.	„ „ Zeiss Biotar $f/2$, focal length 8 cm.	50	0	0
—	Brown Leather Ever-Ready Case	1	5	0
—	„ „ Case with divisions for telephoto lens and accessories	1	12	6
—	Attaché-shape Case, strongly sewn and well finished, for camera and full range of accessories, with good lock and key	3	3	0

For interchangeable lenses and other accessories see page 13.

Standard Multi-Speed Exakta

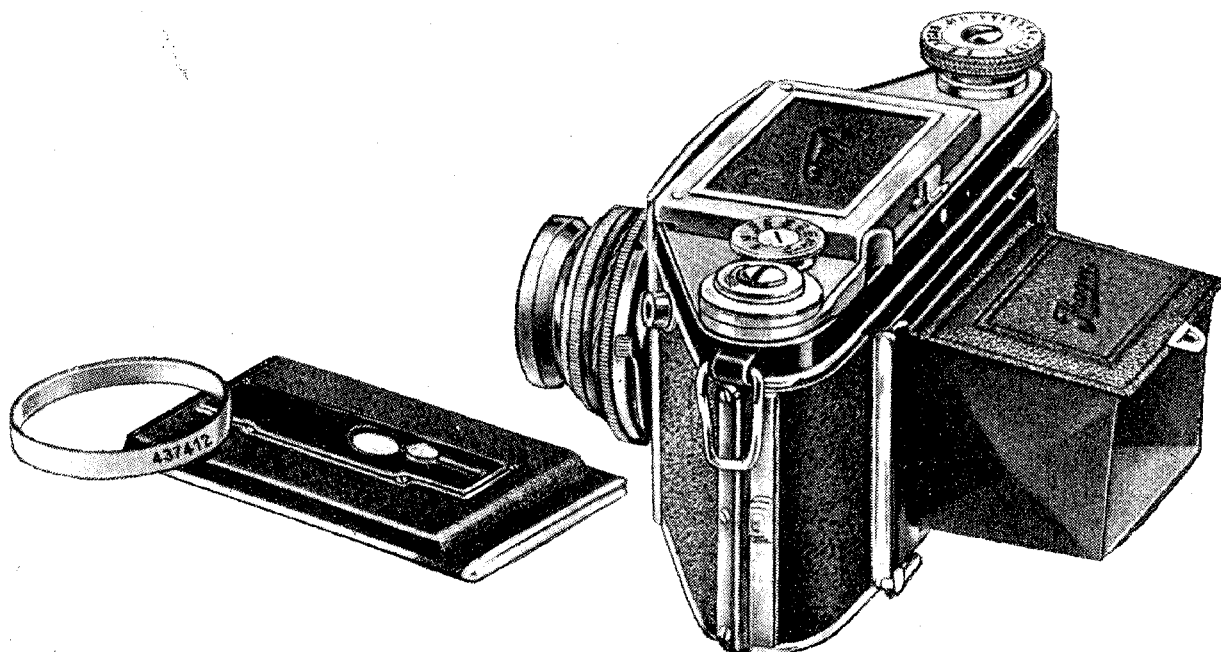
Focal Plane Reflex

MODEL C

FOR ROLL FILMS AND PLATES

Full Size Pictures on V.P. Films 4×6.5 cm. or Plates $4\frac{1}{2} \times 6$ cm.

DE LUXE MODEL. CHROMIUM PLATED



The "Plate Back" is an additional refinement to this versatile miniature Reflex Camera.

Many photographers wish to avail themselves of the use of plates for special purposes.

This model is fitted with a panel in the back which also carries the Film pressure plate. It can be taken out and the focussing screen inserted in its place.

A detachable ring is fitted on the lens mount which must be taken off *when using plates* to allow for the difference in register between plates and films.

Note. When using plates the picture must be focussed on the back screen. The reflex focussing screen is not in register for plates.

Three slides for 4.5×6 cm. plates and back focussing screen are provided.

Prices :

		£	s.	d.
8150 C.BR	Fitted with Exaktar Anastigmat $f/3.5$, focal length 7.5 cm. ..	24	0	0
8150 C.Q	„ „ Zeiss Tessar „ $f/3.5$, „ „ 7.5 „ ..	28	10	0
8150 C.E	„ „ „ „ „ $f/2.8$, „ „ 7.5 „ ..	32	10	0
—	Solid Leather Ever-Ready Case	1	2	6
—	Solid Leather Case with division for Telephoto lens, filters, dark slides, etc.	1	10	0
—	Attaché shape Case, strongly sewn and well finished for camera and accessories, with good lock and key	3	3	0
—	Extra Dark Slides each	2	3	

For Interchangeable Lenses and other accessories see page 13.

STANDARD EXAKTA

For V.P. Roll Films, 4×6.5 cm., $2\frac{1}{2} \times 1\frac{5}{8}$ ins.

MODEL A. CHROMIUM PLATED



This model is similar in construction to the Model B Standard Exakta except that the Focal Plane Shutter only allows for speeds from $1/25$ th to $1/1,000$ th second and time and bulb exposures.

Prices :

					£	s.	d.
8150 ABR	Exaktar Anastigmat $f/3.5$, 7.5 cm. focus	17	0	0
8150 AQ	Zeiss Tessar $f/3.5$, 7.5 cm. focus	21	10	0
8150 AE	Zeiss Tessar $f/2.8$, 7.5 cm. focus	25	10	0
—	Ever-Ready—Solid Leather Case for camera only	1	0	0
—	Square Solid Leather Case for Camera, Telephoto Lens and filters	1	5	0

For interchangeable lenses and other accessories see page 13.

EXAKTA HANDBOOKS

The Standard Exakta Handbook. A treatise on photography in general, and giving full details of the Standard Exakta Camera, and its general working .. 3/6

The Kine-Exakta Manual. A similar work but explaining the Kine-Exakta camera, and giving full particulars of the various branches of work that can be

carried out with this camera .. 5/-

Both these Manuals have been compiled by our expert, Gerhard Isert.

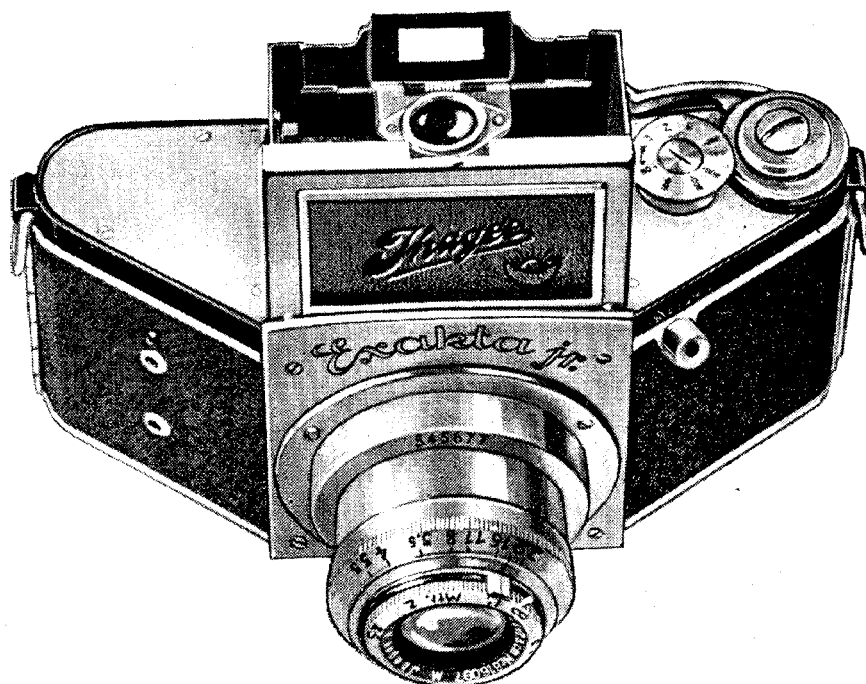


JUNIOR EXAKTA

NEW MODEL FOR 1939

All the desirable features of a Miniature Reflex are embodied in this simple model

For Standard size V.P. films 4×6.5 cm., $2\frac{1}{2} \times 1\frac{5}{8}$ ins.



Focal Plane Shutter with a range of speeds from 1/25th to 1/500th sec., also Time and Bulb.

It is fitted with f/4.5 Ihagee Anastigmat and focussing is effected by rotating the front component on which is engraved a distance scale.

The lens is mounted in a telescopic tube which is brought into position by drawing it out and is then fixed by slightly rotating it to the right into a bayonet slot.

The picture is seen on the ground glass screen similar to the other Exakta models and a magnifier is mounted in the hood for critical focussing.

The lever which winds the film also re-sets the shutter.

Sockets are provided for the Vacu-Blitz Flash Light Equipment and a Leather Sling and Cable Release are included in the outfit.

"Close-ups" can be made with Extension Tubes or with a special "Close-up" Lens, and a supplementary Telephoto Lens and Tube are also available.

Dimensions of Camera : $6 \times 2\frac{1}{2} \times 3$ inches. Weight : 27 ozs.

PRICE

								£	s.	d.
9150M, Chromium Finish	13	10	0
Extras :										
Extension Tube A for close-ups at 13 ins.	8	6	
" " B " " " 8 ins.	8	6	
Supplementary "Close-up" Lens	10	6	
" Telephoto Lens with adapting Tube	1	0	0
Ever Ready Solid Leather Case for Camera..	1	0	0

Standard Exakta Accessories

	£	s.	d.
Ever-ready Carrying Case (Model B 20/-, Model C 22/6), Night Exakta ..	1	5	0
Attaché-shape Case, strongly sewn and well finished, for camera and complete range of accessories, with good lock and key	3	3	0
Wide Angle Lenses :			
Meyer Wide Angle Anastigmat $f/6.8$, focal length $2\frac{1}{4}$ in. (5.6 cm.) ..	12	10	0
Wide Angle Tessar $f/8$, focal length $2\frac{3}{16}$ in. (5.5 cm.)	14	0	0
„ „ Dallmeyer $f/11$, focal length $2\frac{3}{8}$ in.	6	6	0

Telephoto Lenses and Long Focus Lenses :

Ihagee Anastigmat $f/4.5$, focal length $4\frac{1}{4}$ in. (10.5-11 cm.)	5	15	0
Telephoto Lens "Dallon," $f/5.6$, focal length 6 in.	8	15	0
Tele-Tessar $f/6.3$, focal length $4\frac{3}{4}$ in. (12 cm.)	15	10	0
Tele-Megor $f/5.5$ „ „ 6 in. (15 cm.)	12	0	0
Tele-Megor $f/5.5$ „ „ $7\frac{1}{8}$ in. (18 cm.) *	15	5	0
Tele-Tessar $f/6.3$ „ „ $7\frac{1}{8}$ in. (18 cm.) *	24	0	0
Tele-Megor $f/5.5$ „ „ 10 in. (25 cm.) *	28	15	0
Tele-Tessar $f/6.3$ „ „ 10 in. (25 cm.) *	30	0	0
Tele-Xenar $f/5.5$ „ „ $5\frac{7}{8}$ in. (15 cm.)	12	0	0
„ „ $f/5.5$ „ „ $7\frac{1}{8}$ in. (18 cm.)	14	10	0
„ „ $f/4.5$ „ „ $9\frac{1}{8}$ in. (24 cm.)	30	0	0
„ „ $f/5.5$ „ „ $11\frac{3}{4}$ in. (30 cm.)	25	0	0
„ „ $f/5.5$ „ „ $14\frac{1}{4}$ in. (36 cm.)	30	10	0

Supplementary Lenses** in Push-on Mounts :	Near-lens			Tele-lens		
	s.	d.		£	s.	d.
For $f/3.5$ Exaktar and $f/3.5$ Tessar lenses	10	6	Including lengthening tube	1	0	0
For Tessar $f/2.8$	10	6		1	2	6
„ Lenses of $f/2$ and $f/1.9$	16	6		1	10	0
Extension Tube "A" (1.5 cm.) Chromium				8	6	
„ „ "B" (3 cm.)				8	6	
Lens Hood** for all lenses apart from those of $f/2$ and $f/1.9$				7	6	
„ „ for Night Exakta with $f/2$ or $f/1.9$ lens				10	6	
Filters** in Yellow, Green, Blue or Red grades : Up to \varnothing 32 mm. ..				12	6	
Up to 37 mm.	£0	15	0			
Duto Soft-focus Disc** Grade 0 or 1, for lens of \varnothing 28.5 mm. ..				1	10	0
For lens of \varnothing 32 mm.	1	10	0			
„ „ \varnothing 42 mm.	1	17	6			
Bernotar Polarisation Filter**, for lens of \varnothing 28.5 mm.				3	0	0
For lens of \varnothing 32 mm.	£3	12	6			
„ „ \varnothing 42 mm.	4	10	0			
Aviator's Shutter Release				2	0	
Focussing Peg for ease in focussing (cannot be used with Night Exakta models)				2	6	
Leather Extension for finder hood				7	0	
„ „ „ with magnifier built in				17	6	
Exakta Miniature Tripod, with ball and socket head, in 12 sections (closed 8 in., open 46 in.)				3	0	0
Ball and Socket Tripod Head (needed for upright pictures from tripod) ..				6	6	
Micro-Attachment				4	4	0
Large Flash-bulb Synchroniser Outfit				2	5	0
Copying Stand				6	10	0
Exakta Lumimax Enlarger, no condenser, with baseboard and metal pillar ..				6	0	0
„ „ „ condenser model, with baseboard and metal pillar				8	0	0
Lumimax Projector-Enlarger, with metal pillar and baseboard, for either projecting or enlarging, without lens, to take Standard Exakta lens ..				11	11	0

* With the $7\frac{1}{4}$ and 10 in. focus lenses there is slight vignetting at the narrow sides of the image.

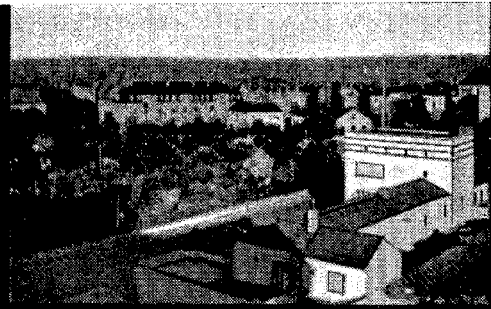
** When ordering state the lens, make, full aperture and focal length.

EXAKTA LENSES

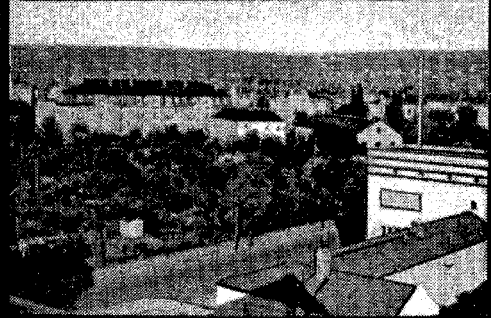


For prices of Kine-Exakta Lenses see page 5.
For prices of Standard Exakta Lenses see page 13.

For both models of Exakta Camera (Kine and Standard) various lenses are available, each in its special mounting, and both telephoto and wide-angle types can be used when desired. No special type of finder is required with any of these lenses, as the image on the ground glass focussing screen is identical with that recorded by the camera whatever lens is in place. This is a highly important point, and is only possible by the use of the single-lens reflex principle. Parallax error between the view-finder and the final picture does not exist. By using the interchangeable lenses available, the user of the Exakta is assured of universal flexibility in his equipment. Whether portraits, genre, landscapes, architecture, sports, scientific work, or any other field of photographic activity is in question, the Exakta will always give excellent service. The illustrations here show the effect of various lenses, assuming the same stand-point for the camera, and the wide variety of reproduction scales available can be seen at a glance. Whatever the subject, the Exakta will always record it.



Tessar $f/4,5$, $1\frac{9}{16}''$ (4 cm.) angle of field 55°



Exaktar $f/3,5$, $2\frac{1}{8}''$ (5,4 cm.) angle of field 43°



Tele-Megor $f/5,5$, $6''$ (15 cm.) angle of field 16°



Tele-Tessar $f/6,3$, $10''$ (25 cm.) angle of field 10°

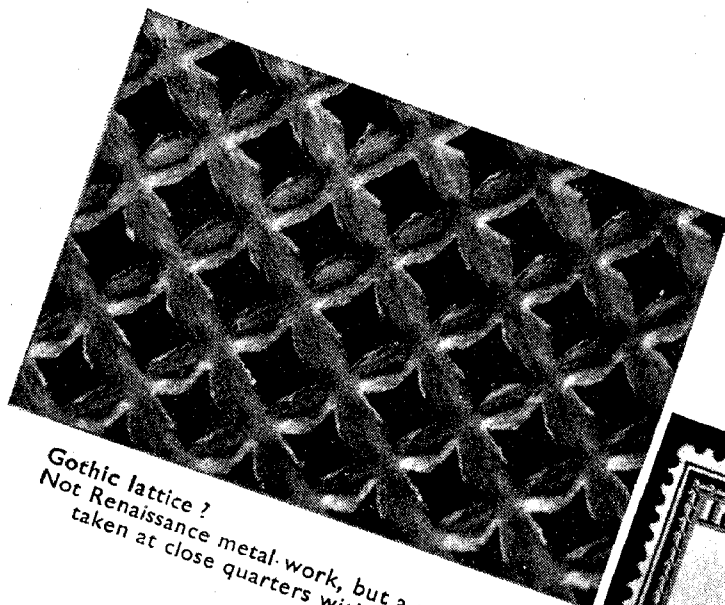


Zeiss-Distance lens $f/8$, $20''$ (50 cm.) angle of field 5°

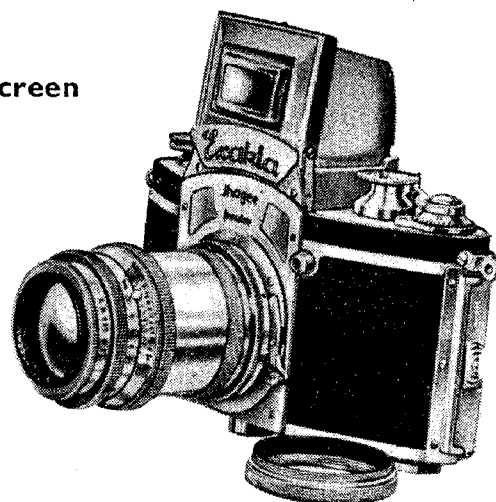
Two special fields in which the **EXAKTA** scores:

**PHOTO-MICROGRAPHY AND
PHOTO-MACROGRAPHY**

with full focussing on the ground-glass screen



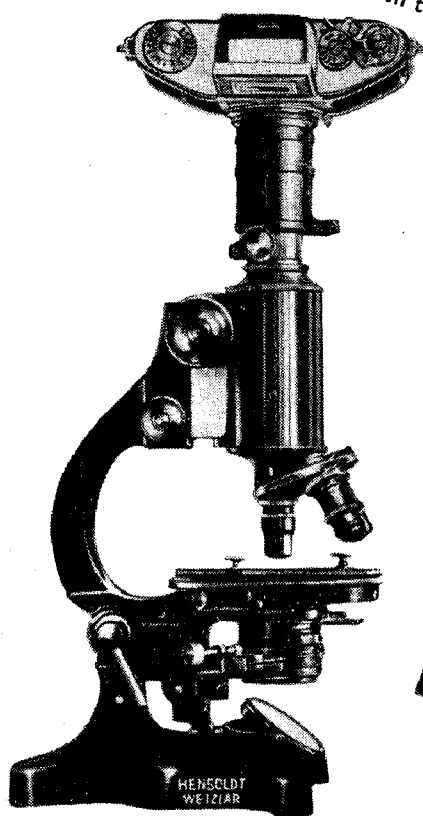
Gothic lattice ?
Not Renaissance metal work, but a metal sieve
taken at close quarters with the Exakta



Kine-Exakta with extension
tubes, for very close work



Photo-macrograph : Taken with the extension
tubes of the Exakta, so that already the image
on the negative is larger than the original



Kine-Exakta with Micro-attachment,
arranged for photo-micrography

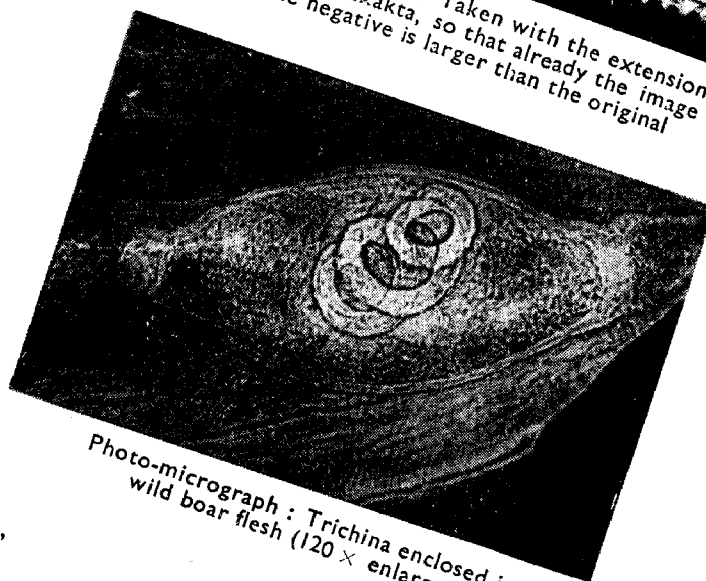


Photo-micrograph : Trichina enclosed in
wild boar flesh (120 × enlarged)

Micro Adapter for Standard Exakta	£4	4	0
„ „ „ Kine	£4	10	0

For particulars and prices of Extension Tubes see page 21

EXAKTA ACCESSORIES

No special view-finder is required with Exakta cameras either for Photo-micrography of Photo-macrography ; the normal image on the ground glass is used both for composing and focussing. Distance meters, tables for focussing, and special equipment in difficult cases are all unnecessary, for the direct reflex image seen in the finder hood does all the work automatically. Animalculae, small insects, and even bacteria, can be followed in their movements on the screen, and the exposure made at the most useful moment.

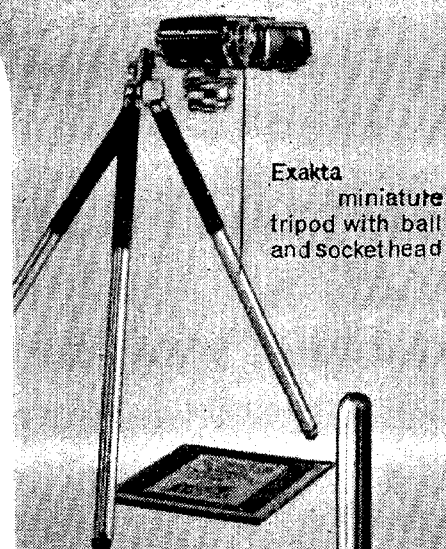
The only accessories needed for these special fields :

The Micro-attachment, for photo-micrography. Using this device, the Exakta can be attached to any desired microscope. The attachment has a hinge, so that the camera may be swung out of the way when the eyepiece—which is used as a camera lens—must be changed.

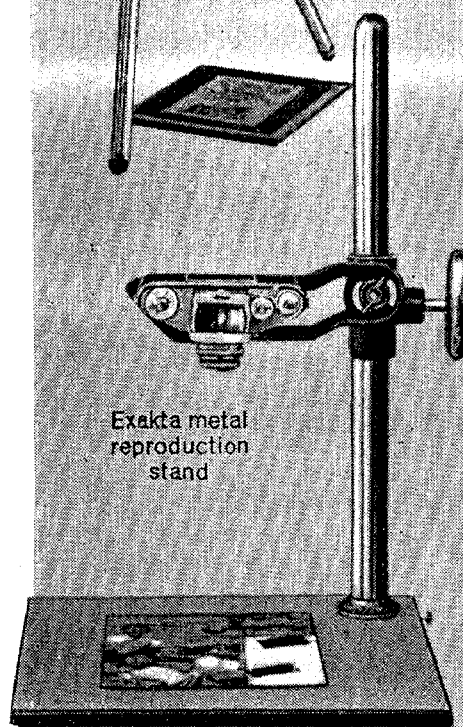
The extension tubes for photo-macrography. These tubes are made in two lengths, and attach to the camera and lens by special distance rings. Using both tubes together, objects an inch or two from the lens may be focussed on the screen, and when a supplementary lens is used as well, even greater magnification is possible.

In the special field of copying and reproduction work generally two important accessories are available. These are the Exakta metal reproduction stand and the

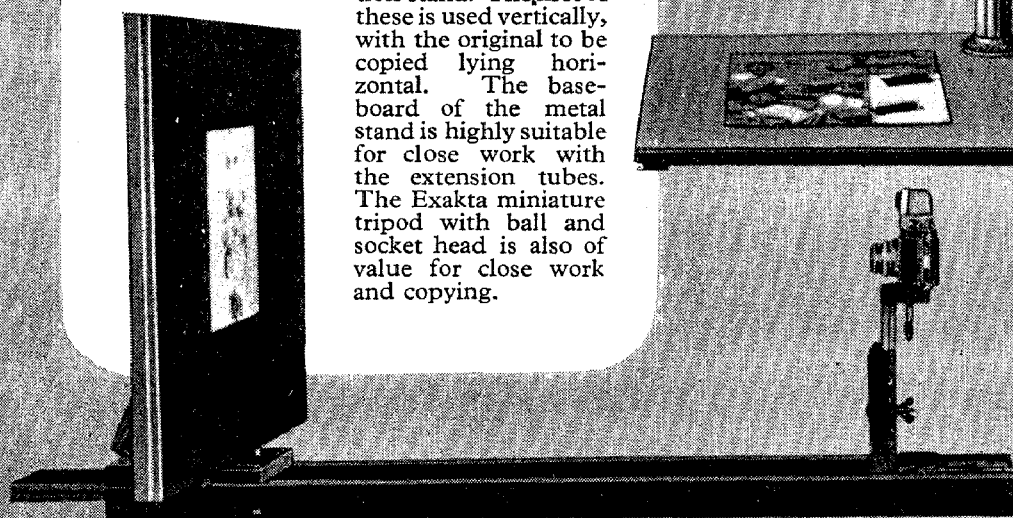
Lumimax reproduction stand. The first of these is used vertically, with the original to be copied lying horizontal. The base-board of the metal stand is highly suitable for close work with the extension tubes. The Exakta miniature tripod with ball and socket head is also of value for close work and copying.



Exakta
miniature
tripod with ball
and socket head



Exakta metal
reproduction
stand



Lumimax reproduction stand

7 draw metal tripod with ball and socket head	£1 17 6
12 draw metal tripod with ball and socket head	£3 0 0
Exakta metal reproduction stand	£6 15 0
Lumimax reproduction stand for Kine Exakta	£4 15 0

Everything has been thought of . . .

Here are a number of reliable accessories which are intended to make the use of the Exakta models even easier.

1 Finder hood extension, with built-in magnifier. This hood keeps strong side light from the focussing screen, while the magnifier enlarges the entire image **17/6**

2 Additional button-release. By screwing this accessory into the normal release button of the camera, the latter can be operated with ease even when heavy gloves are worn **2/-**

3 Lens hoods. These are specially important in against-light exposures, since they keep stray light out of the lens **7/6**

4 The ball and socket tripod head will hold the Exakta in any desired position on a tripod. It is essential for upright pictures from a tripod or stand . . **4/6**
Heavy model (see page 38) . . **6/6**

5 The Flash-bulb synchroniser converts any Exakta into a synchronised flash camera, and the release of the shutter itself automatically fires the flash-bulb.

£2 5 0





CASES FOR EXAKTA

The "Exakta" is worth careful protection. Therefore, when you buy a camera, purchase a case which will protect it from external damage. The case shown fully surrounds the camera without, however, interfering with its readiness to use. Open the case and your camera is ready for work. A bush holds camera and case together. You can also screw the "Exakta" with its case on to a stand, as the bush has the necessary outer thread.

Kine Exakta Ever-ready Case, Brown Leather	£1	0	0
" " " " Pigskin	1	10	0
Standard Exakta Ever-ready Case up to f2.8 Lenses	1	0	0
" " " " Pigskin	1	10	0
" " " " for Plate Back Exakta, Brown Leather	1	2	6
" " " " for Night Exakta, Brown Leather	1	5	0
Solid Leather Square Form Case for Models A and B, with divisions for camera, telephoto lens and filter, with lock and key	1	5	0
Ditto, ditto, for Model C	1	10	0



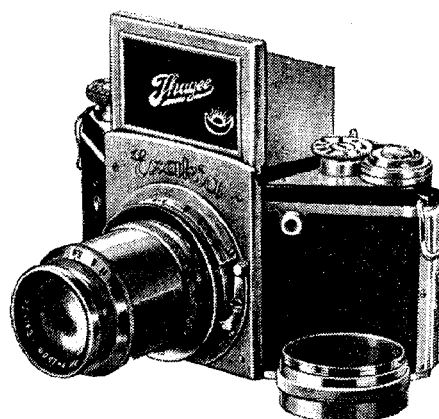
Attaché shape, solid brown leather, strongly sewn and well finished, lined velvet, for all models of Exakta cameras, with divisions for a complete range of accessories, with good lock and key £3 3 0

Accessories for Exakta Cameras

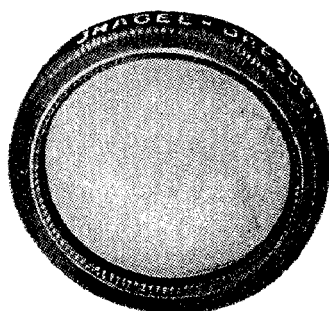
EXTENSION TUBES

Double Extension with Your EXAKTA

It may appear impossible, but it is nevertheless true! The Exakta Extension Tubes, screwed in between the focussing mount and the lens, produce a double extension. This makes it possible to obtain real close-ups of small objects, such as coins, stamps or insects, grass, flowers, etc. The extensions may be joined and the extension of the focussing mount and two tubes B produce double the normal focal length, and thus pictures of the actual size of the object. The image on the ground glass is always decisive for focussing.



							£	s.	d.
EXTENSION TUBES FOR STANDARD EXAKTA									
A.	1½ cm.	for photographing at a distance of 13 ins.	8	6	
B.	3 cm.	" " " " " 8 ins.	8	6	
EXTENSION TUBES FOR KINE EXAKTA									
C.	0.5 cm.	for photographing at a distance of 11½ ins.	8	6	
B.	3 cm.	" " " " " 8 ins.	8	6	
D.	For photographing at a distance of 1 ft. 4 ins. to 2 ft. 1 in. and can be used in conjunction with Tubes A and B						1	10	0
Pair of Distance Rings (necessary for Kine Exakta)							1	0	0



SUPPLEMENTARY LENSES

The Exakta Supplementary Lens for Close-ups shortens the focal length of the lens so that one may approach the object more closely. The Exakta Tele-Lens, on the other hand, lengthens the focal length to about 10.5 cm. The view-angle becomes smaller, but the size of the object increases compared with the normal optical system approximately 33-1/3 per cent. An extension tube is included in the price of Tele-Lens for Standard Exakta but for Kine Exakta the pair of Distance Rings only must be used.

For Standard Exakta

	Close-up Lens	Tele Lens and Tube
For f/3.5 Lenses ...	10 6	1 0 0
" f/2.8 ...	10 6	1 2 6
" f/1.9 or f/2 Lenses ...	16 6	1 10 0

For Kine Exakta

	Close-up Lens	Tele Lens
For f/3.5 and f/2.8 Lenses	10 6	10 6
" f/1.9 and f/2	16 6	16 6
Pair of Distance rings*	...	1 0 0

* Necessary for Tele Lens.

EXAKTA LIGHT FILTERS

When ortho- or panchromatic material is used, Exakta Filters help to bring out correct tone values.

The **Yellow Filter** for orthochromatic material.

The **Green Filter** for panchromatic material.

The **Blue Filter** for panchromatic material with strong sensibility to red, particularly for exposures by artificial light.

The **Red Filter** for panchromatic and infra-red material, especially for distant exposures, and also for night effects in daylight.

Filters with corresponding clip-on mounts are supplied for the various diameters of lens mounts. Complete in neat celluloid case.

YELLOW (Light or Medium) GREEN, YELLOW-GREEN, BLUE, RED

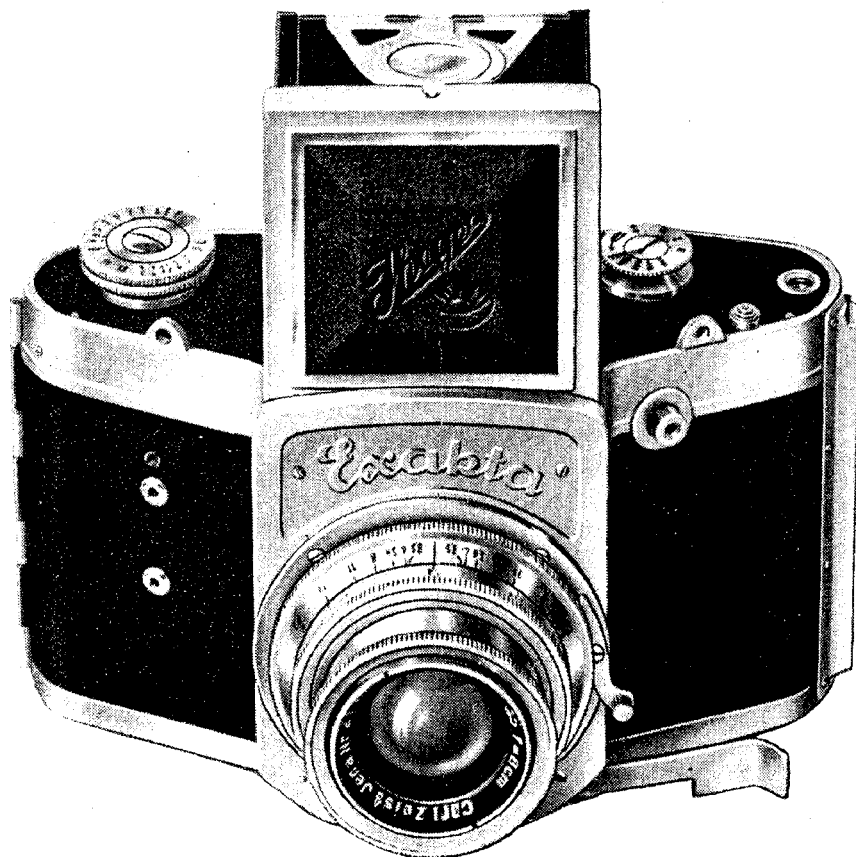
For f/3.5 Standard Exakta, f/3.5 and f/2.8 s.	d.
Kine-Exakta 32 mm.	12 6
For f/3.5 Standard Exakta Tessar, 28.5 mm.	12 6
" f/2.8 " " 37 mm.	15 0
" f/1.9 and f/2 Kine-Exakta, 42 mm.	25 0
" f/1.9 and f/2 Standard Exakta, 51 mm.	25 0

Always state for which lens and camera required.



The 6x6 EXAKTA

(Probable date for delivery Mid-June)



The 6×6 Exakta embodies all the dominant features of the "Standard" Model B. In addition it is designed to take the regular 6×9 film upon which 12 exposures are made, each 6×6 cm.

Every exposure is automatically recorded, the film is changed, and the shutter set, by turning the lever over to the left and then replaced in its original position.

The Lens is fitted in a bayonet socket and interchangeable with other lenses.

Precision workmanship.

Chromium finish.

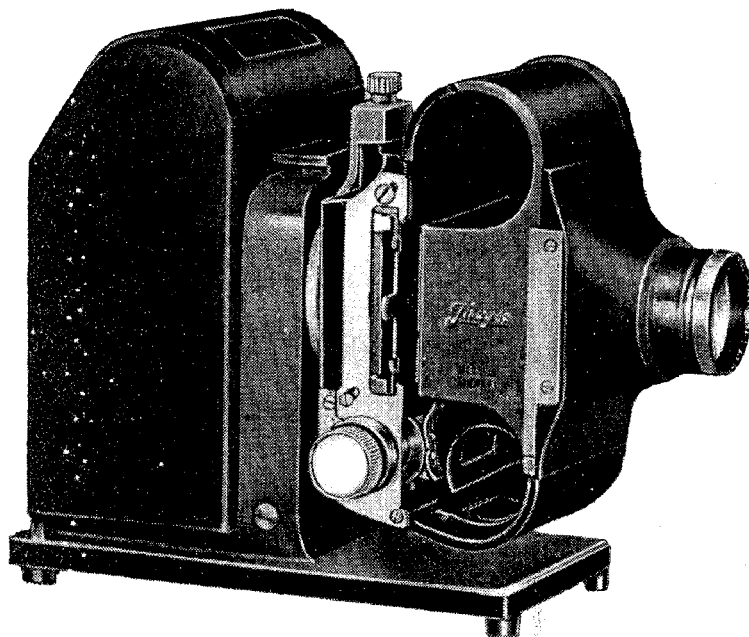
Prices :

				£	s.	d.
No. 8160 B.R.	Ihagee Anastigmat	f/3.5, focus 8.5 cm.	32	0	0
No. 8160 Q.	Zeiss Tessar Anastigmat	f/3.5, focus 8 cm.	38	10	0
No. 8160 E.	" "	f/2.8, " 8 cm.	42	0	0
No. 8160 P.L.	Primoplan	f/1.9, " 10 cm.	58	10	0

EXTRAS

Supplementary Lens for close-ups	10	6
" Tele-Lens and tube	1	10 0
Extension Tubes, F. 0.8 cm., G. 1.6 cm. each	16	6
" " H. 3.2 cm.	1	0 0
Pair of adapting rings to fit tubes into the bayonet mount	1	17 6
Yellow Filters. f/3.5 and f/2.8	.. 15/-	Green, Blue or Red	.. 1 0 0
" " f/1.9	.. 42/-	" " " "	.. 2 10 0
Lens Hoods. f/3.5 and f/2.8 7 6
" " f/1.9 17 6
Solid Leather Case, for f/3.5 and f/2.8 1 10 0
" " " " f/1.9 2 0 0

IHAGEE MINIATURE DIASCOPE



A projector for
miniature film
transparencies in
either film-strip
form or bound
up in glasses

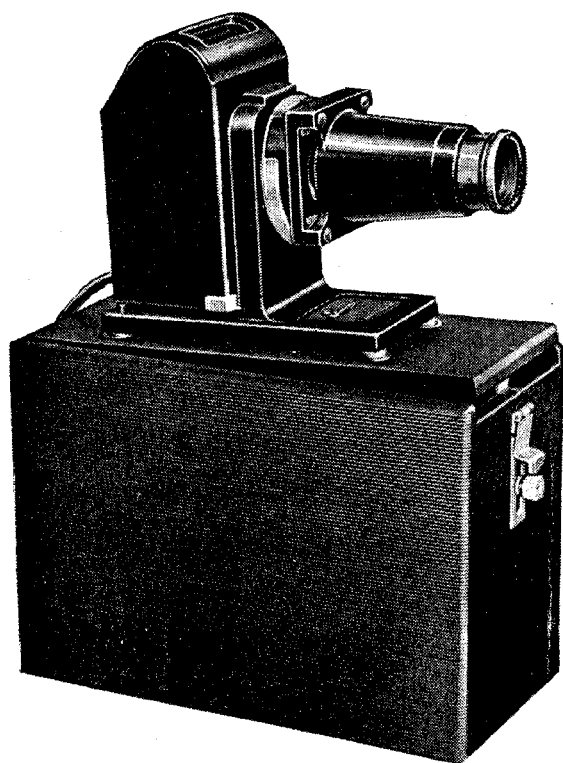
A new projection lantern which is specially suited to the projection of colour films on account of its great light output. It is designed to take 2 in. square glass slides or film strips in the $\frac{3}{4} \times 1$ in. and $1 \times 1\frac{1}{2}$ in. sizes. A triple condenser with heat screen, concave mirror, and rotating device for upright or longitudinal pictures are fitted, and a special device for moving the film strips continuously or picture by picture, completes the practical design. A large-aperture projection $f/2.5$ lens gives a very high light output on the screen, and makes the projector one of the most efficient on the market.

The inner lamp-house consists of a double-walled metal casing, covered with fireproof material, and over it is the outer casing in a synthetic material. The last has the special advantage of both ensuring that the projector never gets too hot externally, and that the external shape is neat and clean. A special system of ventilating ducts is provided, which conduct the warmed air away through vents on top of the lamp-house, and draws cool air in through the lower vents. Even the air between the condenser lenses is circulated in this way.

Complete Projector, including connecting cable with switch and projection anastigmat lens, focal length 3 in., aperture $f/2.5$, but without lamp	£	s.	d.
Ever-ready Carrying Case in wood, covered with synthetic leather	10	10	0
Slide Carrier for 2 in. square glass slides (used in place of the metal mask C)		8	6
Tilting Screw to attach to projector when used without special stand		12	0
100-watt Lamp		11	9

State voltage when ordering.

IHAGEE SIMPLEX DIASKOP



Similar to Ihagee Miniature Diaskop on previous page, but only takes positives mounted in 2×2 in. frames.

Including cable with built-in switch, but without lamp, and Ihagee	£	s.	d.
Projection Anastigmat Lens $f/3.5$, focal length 4 in. (100 mm.) ..	9	9	0
Simplex Carrying Case, in wood, with durable cover	1	12	6
Ever-ready Carrying Case, in wood, with durable cover	2	10	0
Metal Slide Carrier, to fit slot of stage		8	6
Tilting Table,* which screws on to the baseboard		12	0
Transparency Frames 2 in. (5 cm.) square, to take miniature transparencies in the $1\frac{1}{2} \times 1$ in. (24×36 mm.) size, of metal and synthetic material			
Box of 25		15	0
Case to hold 30 transparencies mounted in slides		2	6
Lamp, 100-volt		11	9

* Not required if either of the carrying cases is purchased.



KINE EXAKTA

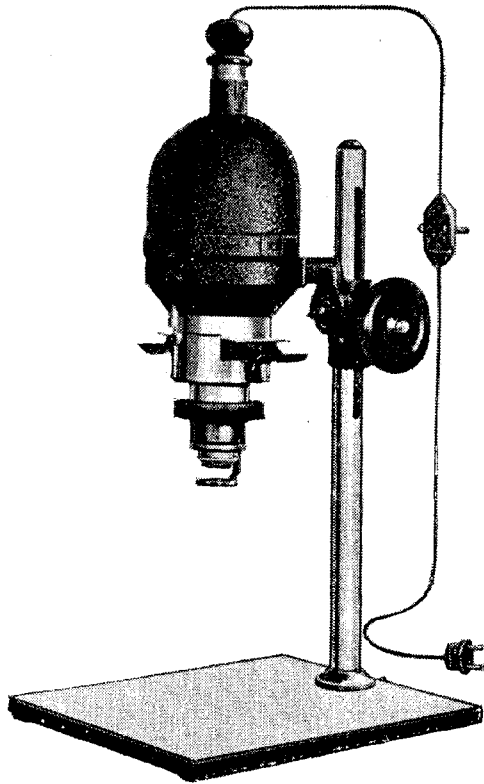
FILM PRINTER

A special miniature film printer is very convenient when printing film-strip transparencies, on positive film. The strips of positives are then shown in a suitable projector. The instrument is low in price, and particularly simple in use.

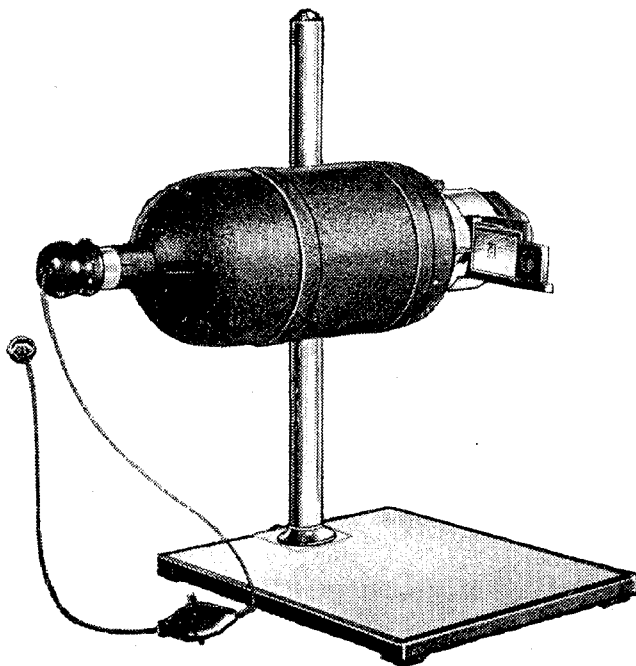
Price £3 0 0

PROJECTION-LUMIMAX

Enlarge and Project with PROJECTION LUMIMAX



Lumimax Projector-Enlarger
set up for enlarging



Duplex Lumimax as Projector

The Lumimax Projector-Enlarger is a reliable and efficient enlarger for negatives in $2\frac{1}{4}$ in. square and smaller sizes, and can also be used as a projection lantern in the home. For the latter purpose the lamp-house is swung round until it is horizontal. A rotating carrier stage is fitted so that both longitudinal and upright pictures can be projected. When used for enlarging, the instrument is vertically placed, and coarse focussing is arranged by a friction mechanism operated by a large hand wheel. Fine focussing is done by a long helical lens mount. Strips of negatives may be placed in the carrier, while special pressure frames are available for single cut negatives. A condenser, giving high light output, is fitted, and the lamp-house is specially well ventilated. For both projection and enlargement, the camera lenses of the Exakta models can be used, but the instrument can also be obtained with a special enlarging anastigmat.

One of the practical Universal Printing Frames is strongly recommended for use.

Projection Lumimax

COMBINATION ENLARGER AND PROJECTION LANTERN

For Exakta, Kine Exakta, 6 × 6 cm. and smaller sizes
enlarging to 15 times linear

Specification :

Lamp House. Aluminium. Crystalline finish, adjustable tube for adjustment of lamp, with flex and safety switch. Spring film stage, with bevelled glass plate.

Optical System. Four-inch Double Plano Condenser. Helicoidal fine adjustment, and ruby screen.

Baseboard. Made of hard wood for 12 × 10 in. paper.

Stand and Focussing. Heavy nickel-plated pillar support with rack adjustment for coarse focussing. Body swings at right angles, on a stout quadrant and fixed by heavy butterfly nut and bolt to allow for projection, or for enlargements of greater size than 12 × 10 inches.

Prices :

Complete Outfit , including connection to lighting circuit with switch (but without lamp), stand, baseboard and condenser :	£	s.	d.
Without objective, with mount for Exakta lens	11	11	0
With Ihagee Anastigmat <i>f</i> /4.5, 7.5 cm. with iris diaphragm	13	13	0
With Schneider Componar Lens <i>f</i> /4.5, 7.5 cm. with iris diaphragm	15	0	0
Lamps for enlarging, 100-watt	2	4	
„ „ projection, 100-watt	10	9	

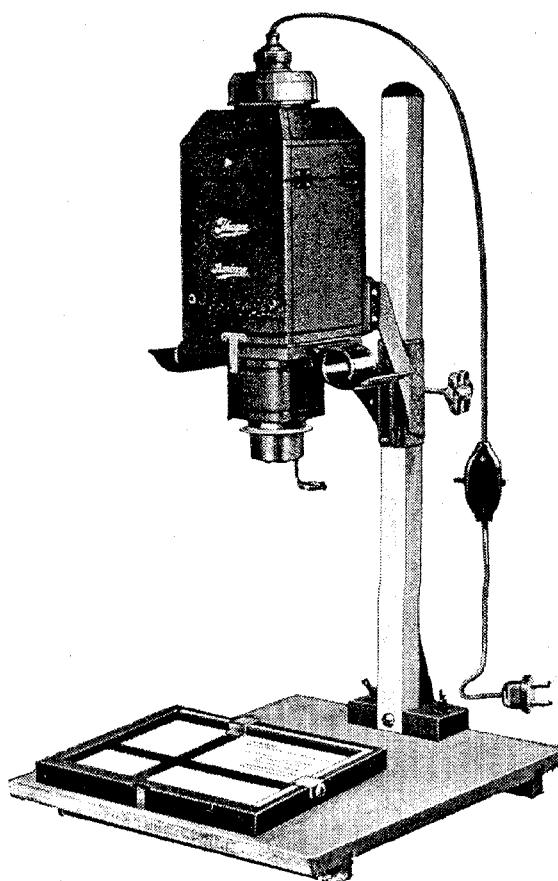
ACCESSORIES

Extension Tube for Projection , as illustrated. An important expedient if perfectly uniform illumination of screen picture is desired. Indispensable for projector lamps and should also be used with all slightly frosted lamps	17	6	
Spare Glass Masks , supplied in all sizes from substandard film up to 2½ × 2½ in. (6 × 6 cm.), in case each	7	6	
Glass Masking Frames for Cut Films , supplied in all sizes from substandard film up to 2½ × 2½ in. (6 × 6 cm.) each	7	0	
Sliding Carriers for Lantern Slides , suitable for 2 × 2 in. (5 × 5 cm.) or 2½ × 1½ in. (4.5 × 6 cm.) slides each	7	6	
Double Extension Connection for reducing to three-fourths of original size. Important for reducing 2½ × 2½ in. (6 × 6 cm.) negatives to 2 × 2 in. (5 × 5 cm.) lantern slides	10	0	
The Duplex Lumimax is also made for use with Kine-Exakta negatives 24 × 36 mm. without lens Price	11	11	0
Universal Enlarging Frames , white inside for sharp focussing, open like a book, and always keep the paper flat. The portions of the paper covered by the edge remain white to provide a nice border for the enlargement. Displaceable steel masks. For all sizes up to 14 × 11 in. (see page 26)	1	15	0

Standard Exakta Enlarger

This is used in conjunction with the lens of the Exakta, which is unscrewed from the camera and screwed into the front of the enlarger. Coarse focussing is effected by raising or lowering the lamp-house, and fine focussing by the helical mount. Films need not be cut into single pictures as a very practical book-form mask is provided. Films will not be affected by heat, as there is a hinged top, which can be left open for ventilation except when actually exposing. A glass mask is supplied for Exakta size (V.P.) negatives. A safety switch is embodied in the flex.

Enlargements from $4 \times 6\frac{1}{2}$ cm. (V.P.) negatives can be made up to 12×10 inches, or even larger. Baseboard and metal pillar are included in the price (lamp extra).



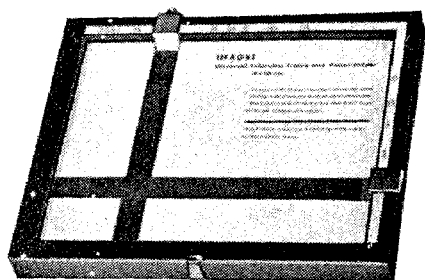
No. 5950, for use with lens of Exakta Camera	£	s.	d.
Extra Glass Masks 24×36 mm., 3×4 cm.	each	6	0	0
100-watt Opal Lamps (<i>state voltage when ordering</i>)	extra	7	0	
					2	4	

The Kine-Exakta Enlarger

This Enlarger is designed to take the lens of the Kine-Exakta, but it is otherwise identical with the Exakta Lumimax illustrated above.

No. 6040. For use with lens of Kine-Exakta Camera	£	s.	d.
Extra Glass Masks 24×36 mm.	6	0	0
100-watt Opal Lamp (<i>state voltage when ordering</i>)	7	0	
					2	4	

Universal Printing Frames

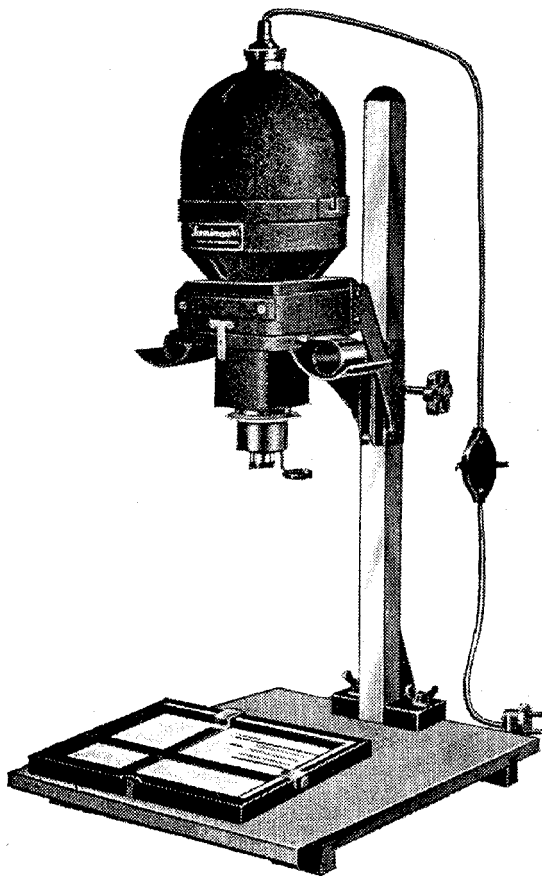


The Universal paper-holders are an essential part of the dark room equipment. They have adjustable border masks, and will take either standard paper or intermediate sizes as may be required. Special advantages include clearly visible scales showing the size of the enlargement, a device to give wide or narrow borders at will, and four special pointed pegs on the under side to prevent movement on the baseboard of the enlarger.

No. 5567. Size $9\frac{3}{8} \times 7\frac{1}{8}$ in. (18×24 cm.)	£	s.	d.
„ 5588. „ $11\frac{3}{4} \times 9\frac{3}{4}$ „	1	1	0
„ 5589. „ 14×11 „	1	7	6
					1	15	0

LUMIMAX ENLARGERS

New Model with Metal Lamphouse and Pillar, Condenser and Baseboard



M2

The Lumimax Enlargers M1 are specially designed to take the lenses of Exakta and Kine-Exakta cameras.

The Lumimax Enlarger M2 is supplied with a special $f/4.5$ Anastigmat of 3 inch focus, and an additional stop $f/6.3$.

It is suitable for all negatives 24×36 mm., 3×4 cm., 4×6.5 cm. and 6×6 cm.

The carrier takes cut or strip films and holds them truly flat, while spare masks can also be obtained. The lamp house moves up and down on its pillar for coarse focussing, and a helical focussing mount with extra long thread for fine focussing.

The lamp house is well ventilated, and can be completely opened by detaching the upper half on a special bayonet catch. As wood becomes hot less rapidly than metal, the mask carrier is made of wood.

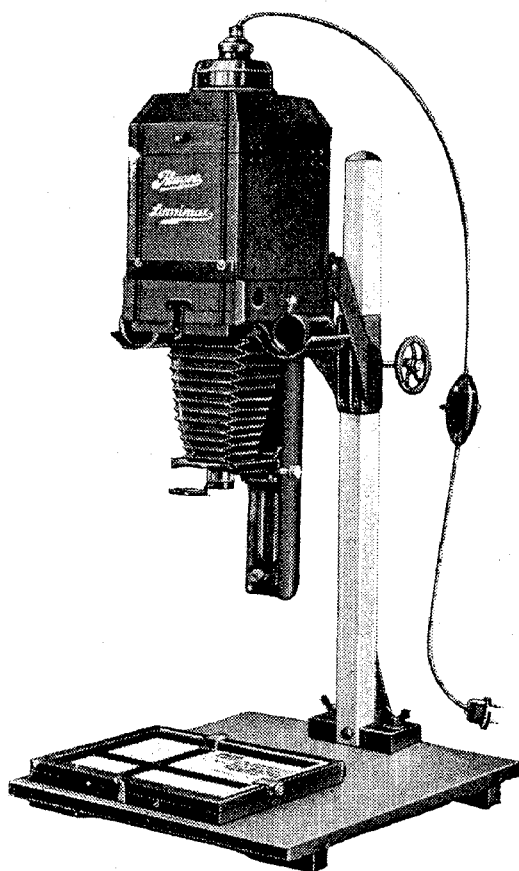
A condenser is provided to increase the light intensity, and collects scattered light which would otherwise be lost, and utilizes it to illuminate the negative. The contrast of the enlargement is also increased as a result, and the exposure considerably reduced.

The range of enlargement given by the Lumimax M1 is approximately $1\frac{1}{2}$ to 6 diameters on the baseboard, while if the lamp house is turned round on its pillar and the baseboard weighted, enlargements up to 14 diameters from 24×36 mm. negatives, may be made. Complete with baseboard, pillar, flex and safety switch, glass mask, but without lamp.

	£	s.	d.
M1 No. 6401. For use with lens of Exakta Camera 4×6.5 cm.	8	0	0
M1 No. 6402. Ditto. Ditto. Kine Exakta Camera 24×36 mm.	8	0	0
Extra Glass Masks 24×36 mm., 3×4 cm., 4×6.5 cm., 4.5×6 cm. and 6×6 cm.	7	0	
100-watt Opal Lamp	2	4	
M2 No. 6450. Complete with $f/4.5$ Ihagee Anastigmat Lens, 7.5 cm. and 3-inch condenser.. .. .	9	9	0
Extra Glass Masks, sizes as above each	7	0	
100-watt Opal Lamp (<i>state voltage when ordering</i>)	2	4	
M2 No. 6450S. Complete with Schneider Componar Lens /4.5, 7.5 cm., and 3-inch condenser	11	11	0

LUMIMAX ENLARGER

$3\frac{1}{4} \times 2\frac{1}{4}$ ins. (6×9 cm.)



This enlarger is constructed for negatives of all sizes up to $2\frac{1}{4} \times 3\frac{1}{4}$ ins. (6×9 cm.). The inclusion of the condenser increases the intensity of the printing light. It also increases the contrast of the enlargement, but if a negative is already sufficiently contrasty, the condensing lens can be removed, and an opal glass placed in the lamp house to diffuse the light. With dense flat negatives, the condenser has the great advantage of increasing contrast and reducing the time of printing.

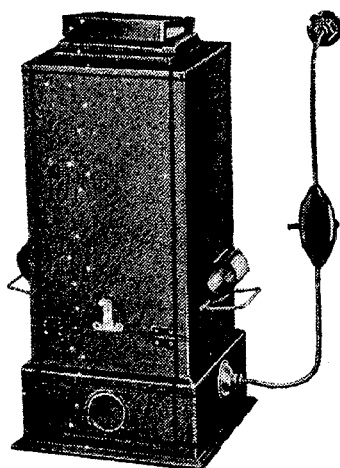
Glass negatives may also be enlarged if the glass mask holding the film is removed from the carrier.

Fine focussing is effected by rack and pinion. Complete with metal pillar, baseboard, flex and safety-switch, but without lamp.

	£	s.	d.
6260. With Ihagee Anastigmat $f/4.5$ and $f/6.3$ stop, 10.5 cm. focus	9	12	6
— Extra Glass Masks 3×4 cm., $4\frac{1}{2} \times 6$ cm., 6×6 cm., each	7	0	
— 100 Watt Opal Lamps (<i>state voltage when ordering</i>)	2	4	

FIXED FOCUS ENLARGER

For 24×36 mm. Film Negatives



This Enlarger is designed for producing enlargements of $3\frac{1}{2} \times 2\frac{1}{2}$ in. (6×9 cm.) $\frac{1}{4}$ -plate (9×12 cm.) and postcard (9×14 cm.) sizes from the miniature $1 \times 1\frac{1}{2}$ in. (24×36 mm.) negatives on cinema film. The film strip is placed uncut in the instrument and held flat with a special device. The image may be examined on a hinged ground-glass screen before exposing, while the printing paper rests on a plate-glass sheet and is pressed into contact with it by means of a rubber pad. A 40-watt opal lamp is used, and a condensing lens ensures efficient use of the light.

No.	Complete with Trioplan Anastigmat $f/4.5$ (2 in. focus), flex with switch and plug and interchangeable upper portion for the larger print sizes	£	s.	d.
40-watt Opal Lamp	extra	6	6	0
		1	10	

The AUTO-ULTRIX

1939 MODEL

WITH BODY RELEASE

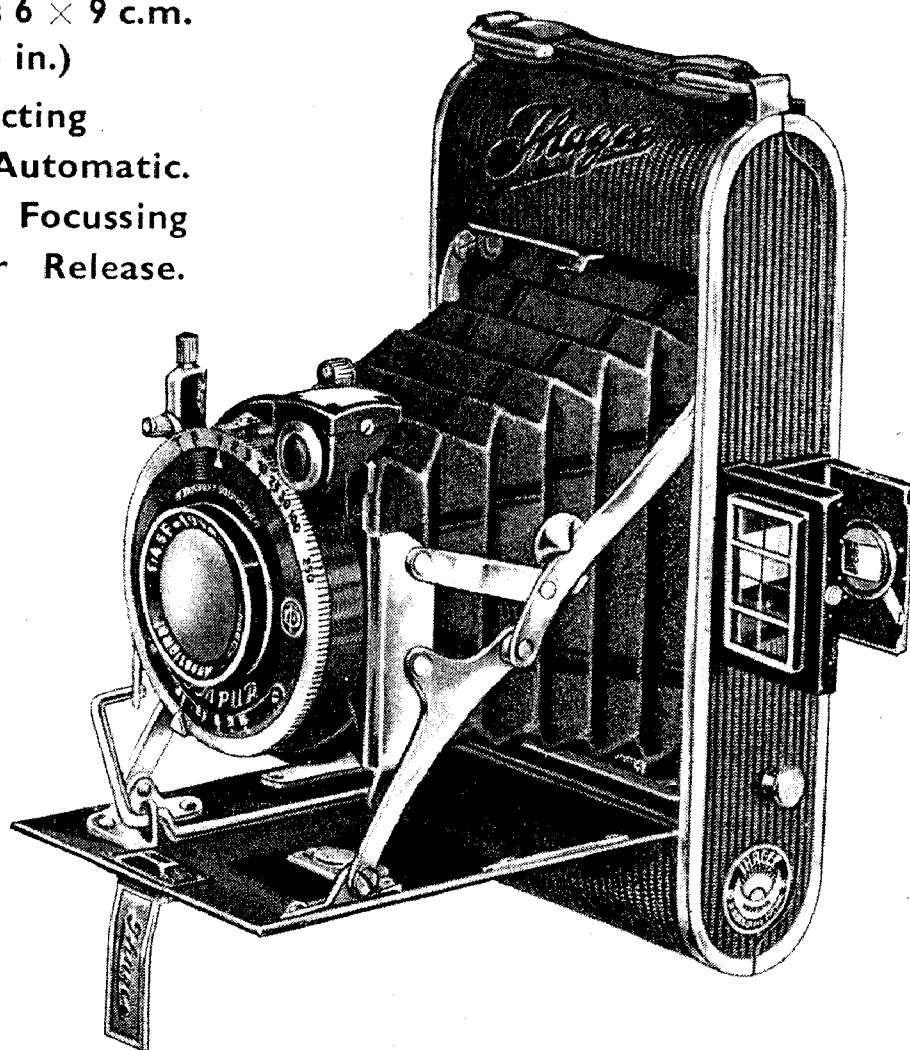
For Roll-films 6×9 c.m.
($2\frac{1}{4} \times 3\frac{1}{4}$ in.)

Self Erecting

Light. Rigid. Automatic.

Lever Helical Focussing

Body Shutter Release.



Specification :

Aluminium body, nickelled struts. Film pressure plate, double rollers ensuring absolute flatness of film. Body release to shutter.

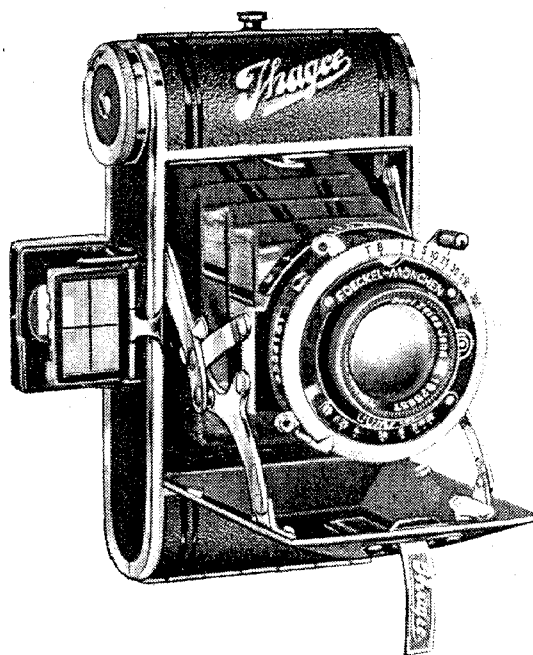
Hinged back, 2 tripod bushes, Cable release, Brilliant and folding frame finders. Covered leatherette, leather bellows. Safety cover to window for Pan. films.

Prices :

No. 4860 M.V. With $f/4.5$ Ihagee Anastigmat Lens and 3-speed Shutter, $1/25$, $1/50$, $1/100$ th second and T. and B. exposures	£	s.	d.
	5	0	0
No. 4860 M.S.P. With $f/4.5$ Ihagee Anastigmat Lens and Prontor II shutter with delayed action—speeds 1 second to $1/150$ th second and T. and B. exposures	6	5	0
No. 4860 M.S.C. With $f/4.5$ Ihagee Anastigmat Lens and Compur Shutter with delayed action—speeds 1 second to $1/250$ th second and T. and B. exposures	7	5	0
Solid Leather Case	7	6	
Yellow Filter	12	6	

The "AUTOLETTE"

Precision Made—V.P., $2\frac{1}{2} \times 1\frac{5}{8}$ ins. (4.5×6 cm.)



The appearance of the "Autolette" may easily lead one to imagine that it would only make pictures 3×4 cm., like so many of the small cameras in use, but nevertheless it is a self-erecting roll film camera and will make the standard size pictures— $2\frac{1}{2} \times 1\frac{5}{8}$ in. (4.5×6 cm.). This is a size that yields beautiful direct pictures suitable for albums, frames or silhouettes, without enlarging.

These pictures are twice the size of those made in the 3×4 camera and owing to the superiority of the longer focus lens in the "Autolette" they are in every respect infinitely better for enlarging.

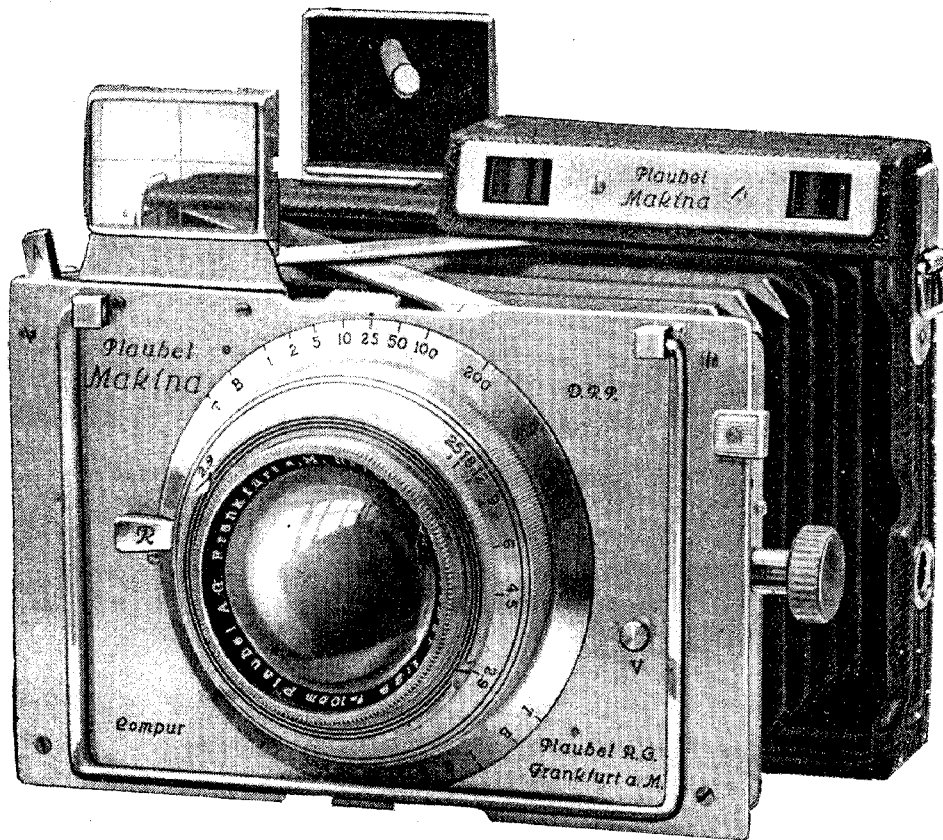
Specification :

Automatic action (self-erecting) and the Optical View Finder opens with the camera, the lens panel opens out parallel and so eliminates any strain on the bellows. The focussing scale is over the objective and is easily read from above. The body is made of one piece of aluminium with hinged back. Size $4\frac{1}{2} \times 2\frac{3}{8} \times 1\frac{1}{8}$. Weight only 11 ozs.

No. 2850 M.S.P. With Ihagee Anastigmat $f/4.5$, 7 cm. focus, and	£	s.	d.
Prontor I Shutter, speeds 1/25, 1/50, 1/100th sec. and T. and B. . .	5	0	0
No. 2850 P.S.P.T. With Ihagee Anastigmat $f/3.5$, 7 cm. focus, and Pron-			
tor II Shutter, speeds 1 second to 1/175th second, and delayed action			
release	6	6	0
No. 2850 N.C. With Schneider Xenar Anastigmat $f/3.5$, 7 cm. focus, in			
Compur Shutter, speeds 1 sec. to 1/100th sec., also T. and B. . .	8	15	0
Soft Leather Case		6	6
Light Filters—yellow, light or medium	10	6	

PLAUBEL MAKINA IIS. 6.5×9 ($2\frac{1}{4} \times 3\frac{1}{4}$ in.)

The only Camera with Coupled Range Finder
For plates, flat films or roll films



Photographs of today that claim to be life like must necessarily include an impression of the bustle of modern life. To make the rapid interchanging of lenses still more rapid, the new IIS Makina has been designed and produced, in which the lens is mounted in a special ring in front of the shutter. The ring is cut with a helical thread of new type which always engages in the shutter ring grooves without the least delay, and the new lens mount combines the optical accuracy of the helical focussing mount with the rapid interchanging of other systems.

The Makina IIS stands out on this account alone from other cameras with rapid interchangeable lenses.

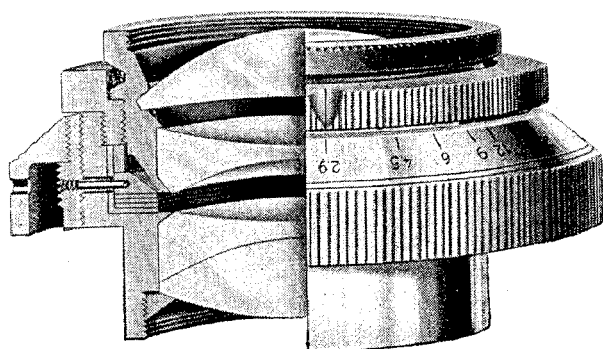
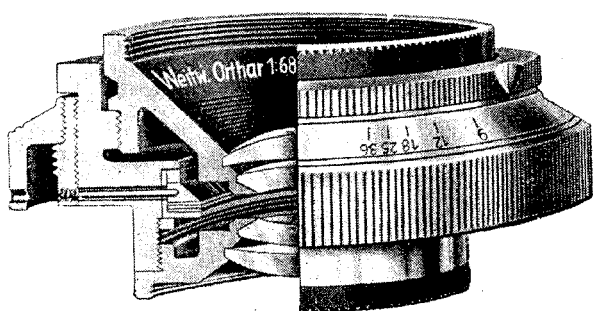
The new type of lens mount is naturally of the greatest value to the press-photographer, and the owner of a Makina IIS will find that it opens up many new opportunities and makes it possible to get the utmost from the lenses supplied for the camera. In the new model Makina, the lenses available include the new Tele-Makinar with full aperture $f/4.8$ and focal length $7\frac{1}{2}$ " (19 cm.). This lens gives semi-automatic focussing with the coupled distance meter, and has the double advantage of rapid interchanging and very large full aperture.

The new Makina IIS is a true instrument for rapid snapshot work, taking a ($6\frac{1}{2} \times 9$ cm.) $3\frac{1}{2} \times 2\frac{1}{2}$ negative, and having the twin advantages of very wide range and simplicity in handling.

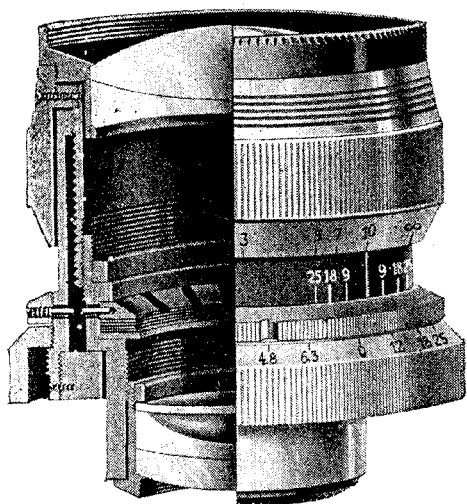
Price £47 10 0

NOTE. Always use $6\frac{1}{2} \times 9$ cm. plates for this camera.

PLAUBEL MAKINA IIS. 6.5×9 ($2\frac{1}{4} \times 3\frac{1}{4}$ in.)

Anticomar *f*2.9

Wide Angle $f6.8$



Tele-Makinar S. f4.8

THE MAKINA LENSES

Just as the Makina camera is original in design and construction, so also are its lenses of special and original design.

THE STANDARD LENS.

The Plaubel Anticomar of full aperture $f2.9$ and focal length 4" (10 cm.) is extremely fast, and produces brilliant images of high plastic effect. This lens may be used universally for day or night photography, and in brilliant sunshine as well as dull weather.

THE WIDE-ANGLE LENS.

The Rapid Wide-angle Orthar lens has an angle of field of some 70°, and has a full aperture of $f/6.8$ with a focal length of 2 7/8" (7.3 cm.). It is specially useful for interior exposures, for photographing tall buildings and for snapshot work. In the last case, the very great depth of focus is a distinct advantage.

THE TELE-MAKINAR S.

This is a special lens with a rapid-changing adapting ring, and has a full aperture of $f4.8$ with a focal length of $7\frac{1}{2}$ " (19 cm.). It is specially designed for use with the new Makina IIS. The accuracy of detail is very high, and the lens is specially useful for news-photography, sporting events, natural history photography in the open, and—to be brief—for all occasions where good definition of a distant object is required. Under these circumstances, the Tele-Makinar S. will come through all tests with flying colours.

Specification :

The front of camera range finder and all fittings are chromium plated, coupled Focussing Range Finder, Parallax adjustment to Newton Finder, and Frame Finder. F/2.9 Plaubel Anticomar Lens, 10 cm. focus. Compur shutter, giving 1/200, 1/100, 1/50, 1/25, 1/10, 1/5, 1/2 and

1 second, also T. and B. with delayed action. Three first quality metal dark slides.

Price £47 10 0

Interchangeable Lenses for Makina II S.

Tele-Makinar S, $f/4.8$, 19 cm., in Leather Case	£22 10 0
Rapid Wide Angle Orthar $f/6.8$, 7.3 cm., in Leather Case	12 12 0

Supplementary Lenses in Leather Cases

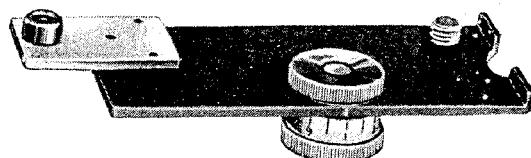
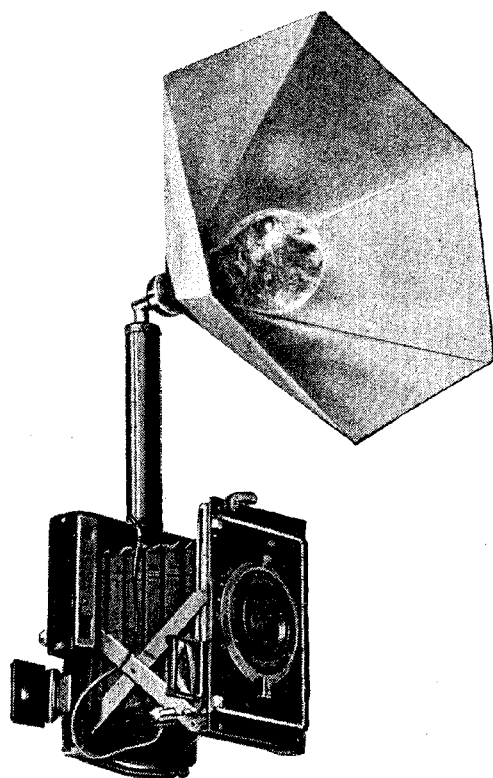
T. 1.5, for photographs at a distance of about 60 cm.	£1	6	6
R 0.1, for photographs of small objects (stamps, etc.) in natural size . .	1	11	6
Yellow Filter, Light, Medium or Dark each	2	0	0
Green, Red or Blue Filters	2	10	0
Finder Frame for use with Tele-Makinar Lens		4	0
Ditto, for use with Newton Finder		4	0
Lens Hood	1	0	0

Accessories for the Makina

PLAUBEL FOCAL PLANE SHUTTER

A new type of focal plane shutter which fits in the back of Makina cameras and then the dark slide or roll holder goes in the back of shutter frame. Speeds up to 1/1000th second. This is a very useful adjunct to these cameras.

	Prices								£	s.	d.
For Makina II	6	10	0
„ Makina II S	5	15	0



PANORAMA HEAD

A very useful piece of apparatus, giving a rotation of 360°. Price £2 5 0

VACUBLITZ

This fitting is screwed into the camera bush, giving a synchronous flash up to 1/50th second. Price £1 2 6

Plaubel Roll Film Holder

3¼ × 2¼ in. (6 × 9 cm.)

Giving 8 or 16 pictures on standard size 3¼ × 2¼ in. film.

Precision made, with Automatic Counter which shows on a dial the number of the exposure without uncovering the red window. This feature makes the Roll Holder perfectly safe for Pan. films.

Covered in real leather with nickel-plated fittings.

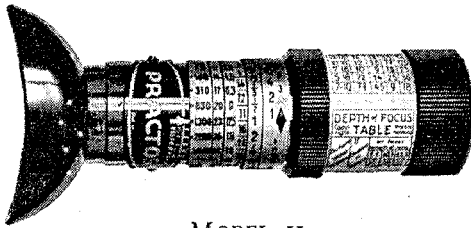
	£	s.	d.
No. 1. For Makina II and II S Cameras	2	12	6
No. 2. For Cameras taking standard size 3½ × 2½ dark slides, i.e. Zeiss Ikon, Voigtländer and Ihagee Cameras	2	12	6

State make of camera when ordering.

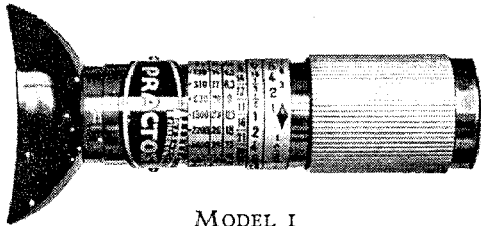
Solid Leather Case for camera slides and roll holder, with lock and key	1	15	0
„ „ Ever-ready Case to carry camera and roll holder	2	15	0
Film Pack Adapter		17	6
Dark Slides		5	0

"Practos" Exposure Meters

For "Still" and "Cine" Photography



MODEL II
Actual View Crystal Clear in Sky
Blue Screen



MODEL I

The MODEL I is simplified by omission of the View Finder and depth of focus Scales.

In Leather Pouch Price £1 2 6

The New Model "Practos" II is the most efficient and simplest of all Exposure Meters, and is a beautiful piece of optical precision work.

The actual view is seen in a perfect optical View Finder, which renders it extremely simple to gauge the light that is reflected from the subject.

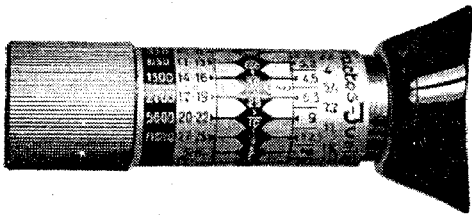
Speeds.—Film and Plate Speeds in both H. & D. and "Scheiner" are legibly engraved on the instrument.

"Practos" is scaled for both "Still" and "Cine."

Filter Factors are also engraved on the scale.

In Leather Pouch Price 27/6

The Junior "Practos" Exposure Meter



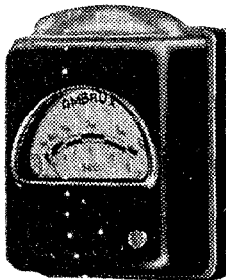
The Junior "Practos" is the simplest of all Optical Exposure Meters. Inside the body is a scale, physiologically adapted to suit normal vision. The darkest number in the instrument that is readable is the correct time of exposure in seconds or minutes respectively at $f6.3$ and 2,700 H. & D. (-26° Scheiner) and no calculations are necessary for other speeds of plates and films.

It is not only extremely simple but absolutely true, and is therefore always ready and always sure.

Film and Plate speeds are given in H. & D. and Scheiner.

In Leather Pouch Price 15/-

Photo-Electric Exposure Meters



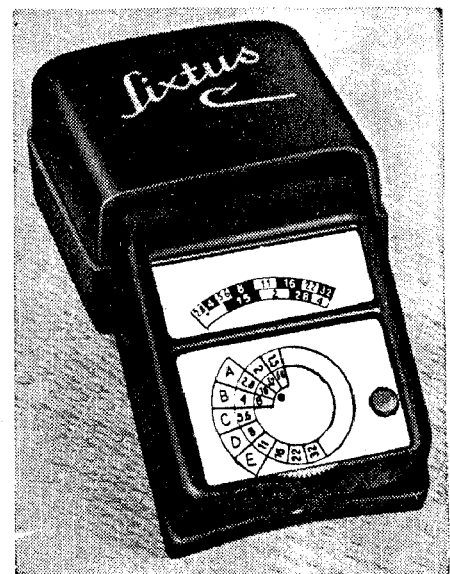
OMBRUX Photo - Electric
Exposure Meter for Still
Camera use .. £3 7 6

BLENDUX Photo - Electric
Exposure Meter for Cine
Camera use .. £3 7 6

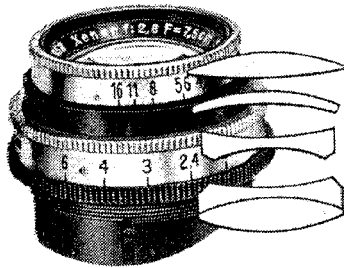
Both models are complete in Ever-ready leather case with instruction book and tables.

SIXTUS. Gives the correct time of exposure for any, even the most difficult photographic subjects, indoor, or outdoor against the light photographs, snow landscapes, or high mountain scenes.

Price in bakelite or Ever-Ready case with £ s. d.
full instructions 5 5 0



SCHNEIDER LENSES



The primary merits of the Xenar design are an exceedingly brilliant image, complete sharpness up to the negative edges and universal suitability for widely differing purposes; consequently the photos taken with Xenar lenses are distinguished by hair-line sharpness and great brilliance.

XENAR F/2.8 AND 3.5

Aperture	Focal length			Price in Normal mount			Price in Focussing mount			Price in Compur shutter		
	in.	cm.		£	s.	d.	£	s.	d.	£	s.	d.
2.8	2	5.0	..	8	2	6	11	5	0	8	17	6 *
2.8	2 $\frac{15}{16}$	7.5	..	8	17	6	11	17	6	10	0	0 *
3.5	2	5.0	..	5	17	6	8	5	0	6	12	6 *
3.5	2 $\frac{15}{16}$	7.5	..	6	5	0	9	12	6	7	0	0 *
3.5	4 $\frac{1}{8}$	10.5	..	8	12	6	10	12	6	10	17	6 *

XENAR F/4.5

Aperture	Focal length			Price in Normal mount			Price in Focussing mount			Price in Compur shutter		
	in.	cm.		£	s.	d.	£	s.	d.	£	s.	d.
4.5	2	5.0	..	5	10	0	6	15	0	6	5	0 *
4.5	2 $\frac{15}{16}$	7.5	..	5	10	0	6	15	0	6	5	0 *
4.5	4 $\frac{1}{8}$	10.5	..	5	12	6	7	0	0	6	7	6 *
4.5	6 $\frac{1}{2}$	16.5	..	9	5	0	12	17	6	13	0	0
4.5	8 $\frac{1}{4}$	21.0	..	14	0	0	16	17	6	18	5	0
4.5	9 $\frac{7}{16}$	24.0	..	21	7	6	24	5	0	26	10	0 †
4.5	10 $\frac{5}{8}$	27.0	..	26	10	0	30	7	6	32	12	6 †
4.5	11 $\frac{13}{16}$	30.0	..	32	2	6	—	—	—	38	5	0 †
4.5	14 $\frac{3}{8}$	36.0	..	51	15	0	—	—	—	—	—	—

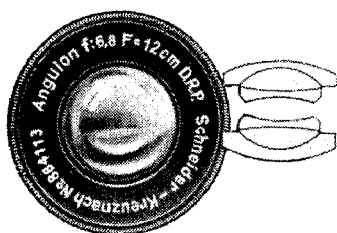
Available in the following aperture values : $f/2.9$, $f/3.5$ and $f/4.5$ and produce an image of extremely high quality.

RADIONAR F/2.9 AND 3.5

Aperture	Focal length			Price in Normal mount			Price in Focussing mount			Price in Compur shutter		
	in.	cm.		£	s.	d.	£	s.	d.	£	s.	d.
2.9	2	5.0	..	6	0	0	8	2	6	6	10	0 *
2.9	2 $\frac{15}{16}$	7.5	..	6	12	6	8	15	0	7	7	6 *
3.5	2	5.0	..	4	15	0	6	10	0	5	10	0 *
3.5	2 $\frac{15}{16}$	7.5	..	5	0	0	6	15	0	5	15	0 *

ANGULON F/6.8

The Angulon is a convertible wide-angle anastigmat. It is used with special advantage for indoor and architectural photography. The maximum angle of view is to 105° . Front and back components can also be used separately. Detailed leaflets sent on request.



Aperture	Focal length			Price in Normal mount			Price in Compur shutter		
	in.	cm.		£	s.	d.	£	s.	d.
6.8	3 $\frac{9}{16}$	9		7	15	0	9	0	0 *
6.8	9 $\frac{1}{16}$	12		8	15	0	11	15	0
6.8	6 $\frac{1}{2}$	16.5		13	0	0	15	2	6
6.8	8 $\frac{1}{4}$	21.0		16	7	6	19	10	0 †

* In Compur-Rapid.

† In Compound.

SCHNEIDER LENSES

The Xenon is designed as a large aperture lens with the highest possible resolving power and definition. This lens has both the qualities of a universal miniature lens as well as those of an extreme practical rapidity for professional film cameras.

XENON F/1.5, 2.0 AND 2.3

Aper- ture	Focal length			Price in			Price in			Price in		
	in.	cm.		Normal mount			Focussing mount			Compur shutter		
				£	s.	d.	£	s.	d.	£	s.	d.
1.5	2	5.0	..	21	5	0	24	7	6	—		
2.0	2	5.0	..	13	15	0	15	12	6	—		
2.3	2	5.0	..	—			15	0	0	—		
2.0	3 $\frac{1}{8}$	8.0	..	21	17	6	22	10	0	23	15	0

XENAR TELE-LENSES

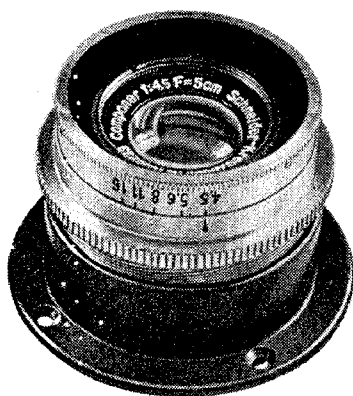
FOR EXAKTA (2 $\frac{1}{2}$ × 1 $\frac{5}{8}$ in.)

Type				Aper- ture	Focal length		Price in Focussing		
					in.	cm.	mount		
							£	s.	d.
Tele-Xenar	5.5	5 $\frac{7}{8}$	15.0	12	0	0
Tele-Xenar	5.5	7 $\frac{1}{16}$	18.0	14	10	0
Tele-Xenar	4.5	9 $\frac{7}{16}$	24.0	30	0	0
Tele-Xenar	5.5	11 $\frac{13}{16}$	30.0	25	0	0
Tele-Xenar	5.5	14 $\frac{3}{16}$	36.0	30	10	0

Tele-Xenar lenses can be delivered for every size of camera. The resulting negatives show excellent definition, great brilliance as well as a very good plastic effect.

COMPONAR F/3.5 AND F/4.5

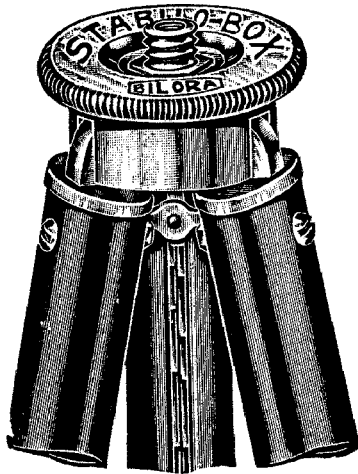
A specially constructed lens for enlarging



Aper- ture	Focal length		Price in Focussing Mount		
	in.	cm.	With iris diaphragm	Without iris diaphragm	
			£ s. d.	£ s. d.	
3.5	2	5.0	4 7 6	3 15 0	
3.5	2 $\frac{15}{16}$	7.5	4 15 0	4 2 6	
4.5	2	5.0	2 17 6	2 5 0	
4.5	2 $\frac{15}{16}$	7.5	3 0 0	2 7 6	
4.5	4 $\frac{1}{8}$	10.5	3 5 0	2 12 6	
4.5	4 $\frac{3}{4}$	12.0	3 12 6	3 0 0	
4.5	5 $\frac{5}{16}$	13.5	5 12 6	5 0 0	
4.5	3	7.5	3 10 0	In special mount for Lumimax Enlarger With flange to fit Leica Ditto	
3.5	2	5.0	5 0 0		
4.5	2	5.0	3 10 0		

A complete catalogue of Schneider Lenses will be sent post free on request.

“Stabilo” Tripods



The sections of these tripods are of D-shape telescopic tubes, designed in a novel and ingenious manner giving great rigidity and ensuring absence of whip.

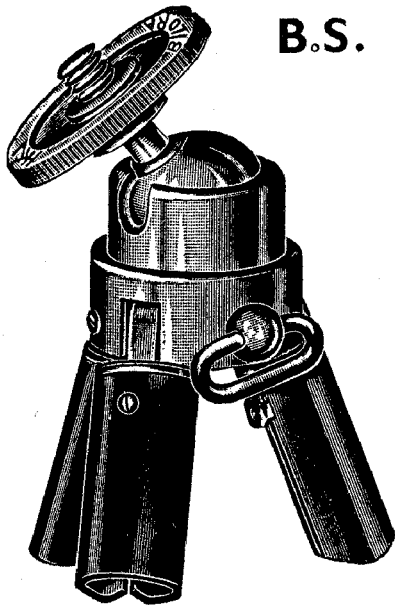
Beautifully finished, outer tubes black enamelled, inner tubes nickel-plated, and superior to any previously offered.

No. 1103. 3-section. Length closed 15½ ins. extended 38 ins. Weight 16 ozs. . . . Price 6/6

No. 1104. 4-section. Length closed 15½ ins., extended 48 ins. Weight 20 ozs. . . . Price 8/6

No. 1105. 5-section. Length closed 14 ins., extended 49 ins. Weight 20 ozs. . . . Price 10/6

B.S. “Stabilo” Tripods

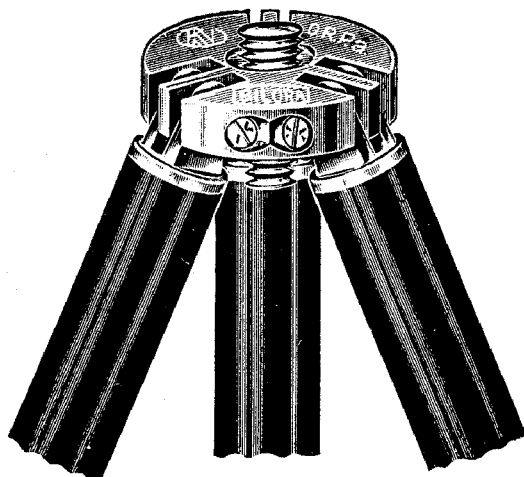


Similar model as described above fitted with a Ball and Socket Revolving Head, enabling the camera to be easily fixed in any position, adjusted by a slight turn of the locking screw.

No. 1104K. 4-section. Length closed, including ball and socket, 17 ins.; extended 49 ins. Price 13/6 Weight 22 oz.

No. 1105K. 5-section. Length closed 14 ins.; extended 49 ins. . . . Price 15/- Weight 24 oz.

“Bilora” Tripods



Machine finished strong brass tubes, with reversible head for either British or Continental threads. Sections fitted in by screws, not rivets. The joints in the head are evenly held by a steel ball on each side of the leg, and all backlash is obviated.

	s.	d.
No. 240. 4-section. Closed 14½ ins, extends 45 ins., height 48 ins., weight 22 ozs. . . .	11	6
No. 250. 5-section. Closed 15½ ins., extends 52 ins., height 51 ins., weight 26 ozs. . . .	13	6

BILORA TRIPODS FIVE FEET HIGH

No. 254. 5-section. Particularly useful for small Cine cameras, as the height is 5 feet, the tubes extra stout and extremely rigid.	s.	d.
Size closed 16 ins. weight 32 ozs.	16	0
No. 654. 5-section. A similar tripod but fitted with strong ball and socket head. Size closed 17½ ins., weight 34 ozs.	21	0

“Stabilo” “Pochette” Tripod

The most elegant and best of all pocket tripods. Special light, strong alloy (not aluminium).

Exceptionally Steady — very light and strong. Suitable for any camera. Outer tubes are ribbed and are fixed by screws into the hinged members. £ s. d.

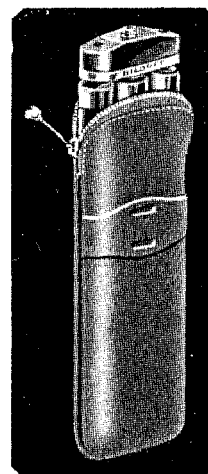
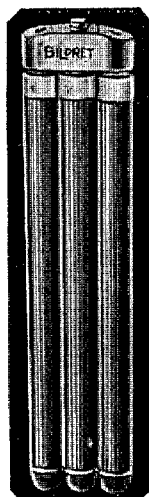
No. 1007. 7 - draw. Size closed 9 ins., extends 45 ins. Weight 11 ozs. .. 1 12 6

No. 1007K. Ditto, ditto, with Ball & Socket head 1 17 6

No. 1010. 10 - draw. Size closed 7½ ins., extends 48 ins. Weight 12 ozs. .. 1 17 6

No. 1009. 9-draw. Very tall when extended. Size closed 10 ins., extends 60 ins. Weight 15½ ozs. .. 2 2 0

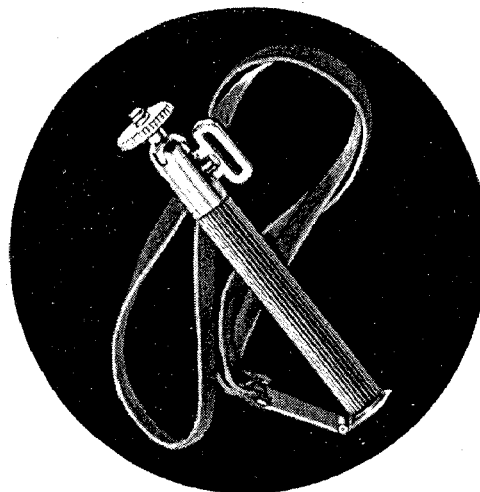
Each Tripod supplied with rubber toes and leather case.



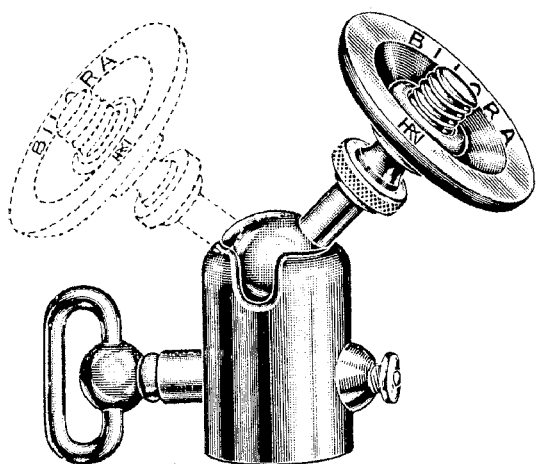
Bilora Chestpod

Made of light metal and fitted with ball and socket. Particularly useful with miniature cameras. The bending device of the ball and socket allows the taking of photographs at eye level either horizontally or vertically. The Chestpod extends to treble its length and is supplied with neck straps and a leather purse.

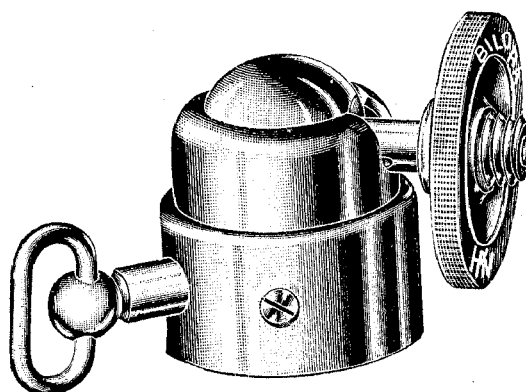
Price .. 13/6



Ball and Socket Heads



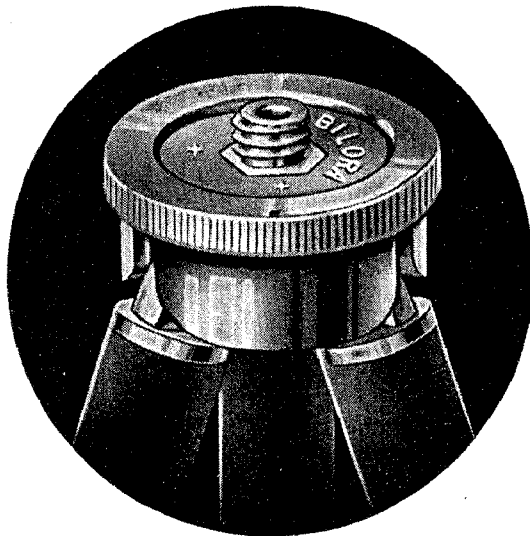
No. 1



No. 2

No. 1.	For Small Cameras	Price 3/6
„ 2.	Heavy Pattern for large cameras and also Panorams for Horizontal pictures	„ 6/6

LIGHT METAL TRIPODS

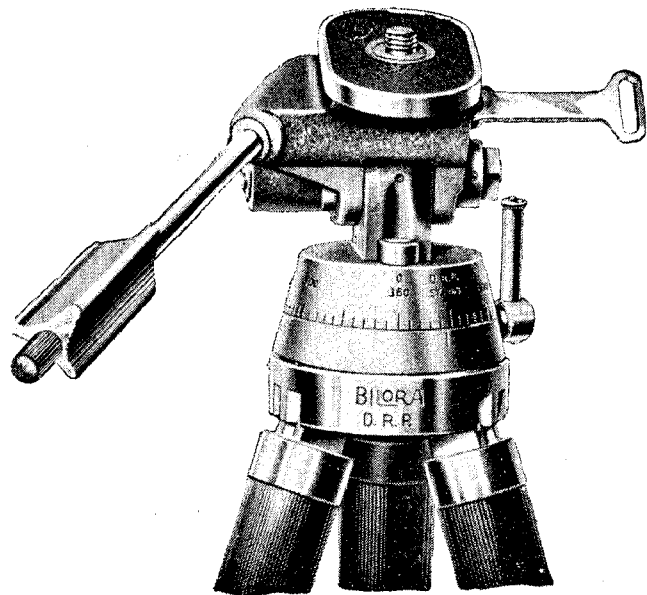


A new series of tripods made from hard white metal (not aluminium). Very strong and light but very efficient. The inner tubes are polished and the outer tube is dull enamelled.

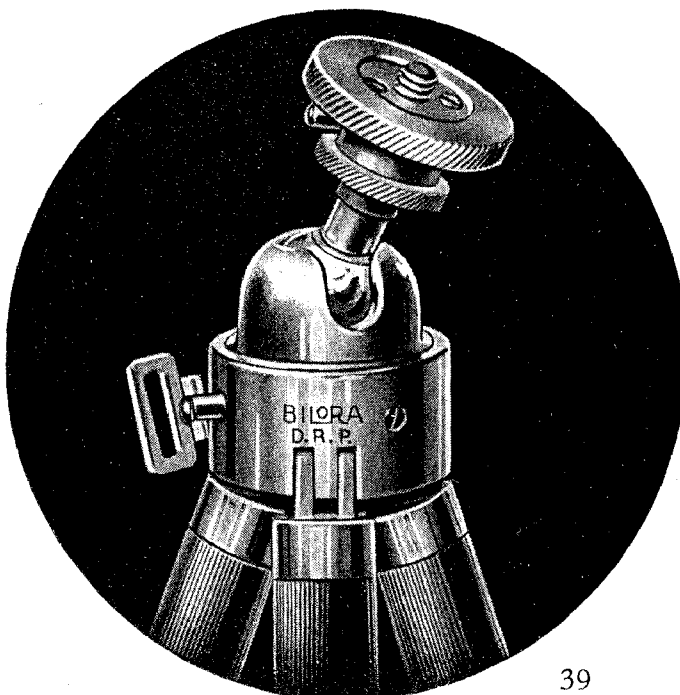
No.		s.	d.
544	4-draw, closed, 15 $\frac{1}{4}$ ins. ; open 49 $\frac{1}{2}$ ins. Weight 11 $\frac{1}{2}$ ozs. ..	13	6
555	5-draw, closed 14 $\frac{1}{2}$ ins. ; open 53 ins. Weight 12 oz. ..	15	6
577	7-draw, closed 11 $\frac{1}{2}$ ins. ; open 49 $\frac{1}{2}$ ins. Weight 14 ozs. ..	18	0

Kine Tripods

Made in hard light metal, giving great stability, although light in weight. The outer tubes with ribbed finish and the inner tubes chromium plated. Fitted with panoramic head, giving a complete circle and also tilting action, so that camera can be used either horizontally or vertically. The metal toes have also rubber fittings for use on slippery surfaces.



No.		£	s.	d.
401	4-draw, size closed 20 ins., extends 60 ins. Weight 3 $\frac{3}{4}$ lbs	5	15	0
301	3-draw, extra heavy model, size closed 27 ins., extends 70 ins. Weight 5 lbs. ..	7	7	0
—	Cloth Case for 401	12	6	
—	„ „ „ 402	13	6	



Universal Ball and Socket Tripod

Made of the same tubes as Kine Tripod, hardened light metal with ribbed permanent coating and reversible feet. A special ball and socket of high precision, revolving horizontally and allowing for panoramic movement on any oblique plane. This last movement is made possible by a platform pivoting on the ball axis. This will be appreciated by the advanced photographer.

No. 404 ..	£4 0 0
------------	--------

EISENBERGER PANCHROMATIC FILM

27° Sch. = 3500 H. & D. $\frac{17}{10}^{\circ}$ DIN



*The latest production from the renowned Eisenberger
factory*

For all miniature cameras.

Special fine grain

PERFECT GRADATION

WITHOUT YELLOW FILTER

BRILLIANT NEGATIVES

ANTI-HALATION

In spite of its high speed, the Eisenberger panchromatic film has a grain the fineness of which was only known formerly in low speed emulsions. For enlarging purposes this quality is of the highest importance. Owing to the great care taken in coating the film, the structure of the emulsion is of remarkable uniformity. While the fine grain is already a good means in itself to prevent halation caused by diffusion, the halation deriving from reflection is eliminated completely by a green coating on the back of the film. This protective coating disappears in the fixing bath. If however a light shade of green remains, this does not interfere with the good printing quality of the negative, it is rather an advantage.

Prices:

$3\frac{1}{4} \times 2\frac{1}{4}$ in. (6 × 9 cm.)	..	1/6	V.P. ($4\frac{1}{2} \times 6$ cm.)	..	1/6
24 × 36 mm. (in cassette) for 36 exposures	3/6

All other sizes at current prices.

GARNER & JONES LTD.

**POLEBROOK HOUSE, GOLDEN SQUARE
LONDON, W.I.**

Telephone and Telegrams : GERRARD 2300