

Ihagee=Cameras



Ihagee=Cameras

24, Schandauer Str.
Dresden=A. 19

Objective-Shutters of the Ihagee-Cameras

In the following we give a short description of the most usual shutters used for our cameras:



Shutters for time-exposures and snapshots, $\frac{1}{25}$ to $\frac{1}{100}$ second, series V

The above shown shutters are automatic shutters, i. e. they are always ready for use and need no setting. The exposure is made by pressing the finger-release or, if preferred, the wire release which can be screwed into the small socket. These automatic shutters are arranged for "bulb" and "time" exposures and for snapshots of $\frac{1}{25}$, $\frac{1}{50}$ and $\frac{1}{100}$ second.



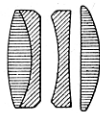
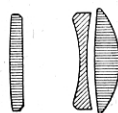
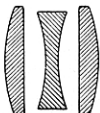
The Ibsor-Shutter is likewise an automatic shutter i. e. it is always ready for use and needs no setting. The exposure is made by pressing the finger-release or, if preferred, the wire release which can be screwed into the small socket. The Ibsor-Shutter is arranged for "bulb" time-exposures and snapshots of 1 , $\frac{1}{2}$, $\frac{1}{5}$, $\frac{1}{10}$, $\frac{1}{25}$, $\frac{1}{50}$, $\frac{1}{100}$ and $\frac{1}{125}$ second as per size of the shutter. With smaller shutters the speed reaches as far as $\frac{1}{125}$ second, with larger ones as far as $\frac{1}{100}$ second.



The Compur-Shutter (also called "Compound-Shutter") is a most ingeniously constructed clockwork. The exposure is made by pressing the finger-release or, if preferred, the wire release which can be screwed into the small socket. The Compur-Shutter is arranged for "bulb" and time-exposures and snapshots of 1 , $\frac{1}{2}$, $\frac{1}{5}$, $\frac{1}{10}$, $\frac{1}{25}$, $\frac{1}{50}$, $\frac{1}{100}$, $\frac{1}{200}$, $\frac{1}{250}$ and $\frac{1}{300}$ second as per size of the shutter. With smaller shutters the speed reaches as far as $\frac{1}{300}$ second, with larger ones it is correspondently less.

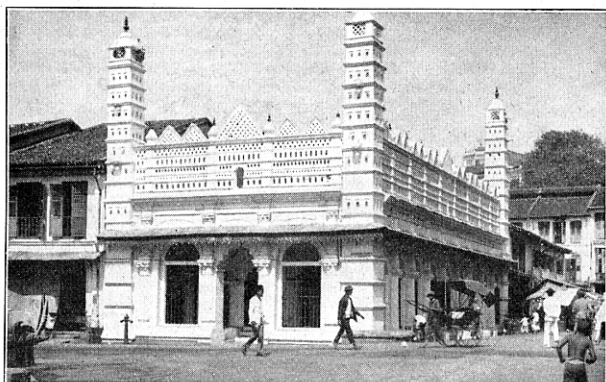
The optical equipment of "Ihagee"-cameras

Achro- matic lens 1:11	Periscopic double objectif 1:11	3-lensed Triplex or Trioplan-Anast. 1:6,8 1:6,3, 1:4,5, 1:3,8, 1:3,5	4-lensed symmetri- cal Veraplan-Anast. 1:6,8, 1:4,5	3-lensed Triotar-Anast. 1:6,3	Zeiss-Tessar 1:6,3 1:4,5
------------------------------	---------------------------------------	--	---	-------------------------------------	--------------------------------



The optical equipment of our cameras is chosen in the most careful way. In accordance with the desires of the customers we are equipping our cameras both with an achromatic lens and periscopic double objectives and with the most sensitive anastigmats. The aplanats which were formerly frequently used have entirely been replaced by the anastigmats having three lenses, since the efficiency and the sensitiveness of the anastigmats are considerably greater. It is a matter of course that one may not claim the same efficiency from the three-lensed anastigmat as from the anastigmat consisting of 4 lenses. The three-lensed anastigmats cannot be corrected to the same extent as the four-lensed, and this is the advantage of the Veraplans and Tessars. Any of our objectives represents in its sphere of price the best that can be offered.



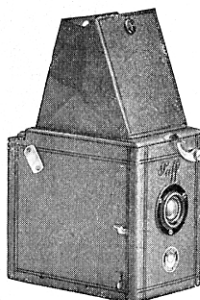


Ihagee Plan Paff Reflex

For film packs $4\frac{1}{2} \times 6$ cm ($1\frac{3}{4} \times 2\frac{5}{16}$ ins.)

The Paff Reflex is a most reliable reflex-camera, showing a full size image right way up until release of shutter. The camera can be loaded and unloaded at day-light.

Details: Camera body made of wood and covered with best leatherette. Focusing-screen above mirror with tall hood. Three stops. Leather-handle. Time and instantaneous shutter.



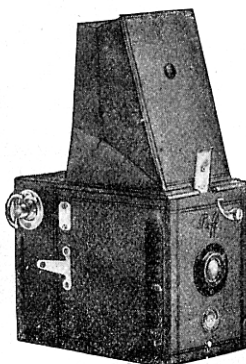
	For film packs $4\frac{1}{2} \times 6$ cm ($1\frac{3}{4} \times 2\frac{5}{16}$ ins.)	For film packs 6×9 cm ($2\frac{1}{4} \times 3\frac{1}{4}$ ins.) and plates $6\frac{1}{2} \times 9$ cm ($2\frac{1}{2} \times 3\frac{1}{2}$ ins.)
Achromatic lens	3	7
Anastigmat Trioplan 1:6,8	4	—
Anastigmat Trioplan 1:6,8 in focusing jacket	4H	9
Best leatherette case	7251	7253
Portrait attachment	7331	7336
3 metal slides $4\frac{1}{2} \times 6$ cm for using the camera with dry plates	7141/3	7143/3
Clamping device for using the camera with tripod	7351	—

Ihagee Roll Paff Reflex

For rollfilms 6×6 cm ($2\frac{1}{4} \times 2\frac{1}{4}$ ins.)

The Roll Paff Reflex shows a full size image of the picture until release of shutter. The Roll Paff can be loaded and unloaded at full day-light.

Details: Camera body made of wood and covered with best leatherette. Focusing-screen above mirror with light hood. Three stops. Leather-handle. Shutter for time and instantaneous exposures.



Achromatic lens	20
Anastigmat Trioplan 1:6,8	21
Anastigmat Trioplan 1:6,8 in focusing jacket	21H
Clamping device for using the camera with tripod	7353
Best leatherette case	7256
Portrait attachment	7331

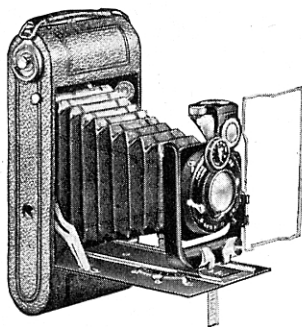
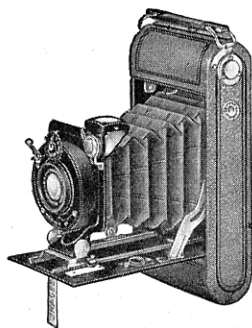


Ultrix Simplex

For rollfilms 6×9 cm ($2\frac{1}{4} \times 3\frac{1}{4}$ ins.) and $6\frac{1}{2} \times 11$ cm ($2\frac{1}{2} \times 4\frac{1}{4}$ ins.)

Notwithstanding its very low price the Ultrix-Simplex is constructed with care precision and finish; an ideal camera for the beginners and capable of splendid results. Such value could not be offered but for the quantity production made possible by the huge demand for this model.

Details: Body of camera made of metal, covered with best leatherette. Leather-bellows, black enamelled base-board and front. Adjustment according to focusing scale. Cable release. Irisdiaphragm. Brilliant-finder. Tripod-sockets. Shutter for time and instantaneous $\frac{1}{25}$ — $\frac{1}{100}$ second.



	6×9 cm ($2\frac{1}{4} \times 3\frac{1}{4}$ ins.)	$6\frac{1}{2} \times 11$ cm ($2\frac{1}{2} \times 4\frac{1}{4}$ ins.)
Periscopic lens 1:11 . . .	1360 FV	1370 FV
Ihagee Anastigmat 1:6.8 . . .	1360 HV	1370 HV
Ihagee Anastigmat 1:6.3 . . .	1360 KV	1370 KV
Ihagee Anastigmat 1:4.5 . . .	1360 MV	1370 MV
Best leatherette case . . .	7273	7276

Ihagee Ultrix

For rollfilms 6×9 cm ($2\frac{1}{4} \times 3\frac{1}{4}$ ins.), $6\frac{1}{2} \times 11$ cm ($2\frac{1}{2} \times 4\frac{1}{4}$ ins.), $8 \times 10\frac{1}{2}$ cm ($3\frac{1}{8} \times 4\frac{1}{8}$ ins.), $7\frac{1}{4} \times 12\frac{1}{2}$ cm ($2\frac{7}{8} \times 4\frac{7}{8}$ ins.), 8×14 cm ($3\frac{1}{4} \times 5\frac{1}{2}$ ins.)

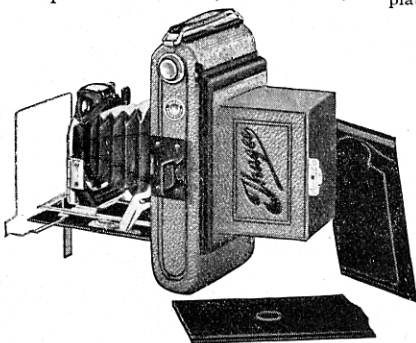
Focusing by new radial lever. The Ihagee Ultrix is a rollfilm camera of the highest class. Its construction combines portability lightness and rigidity in a remarkable degree while the finish leaves nothing to be desired.

Details: Metal-body drawn in one piece of aluminium, covered with genuine leather. Leather-bellows. Aluminium-base-board and front black enamelled. Brilliant-finder with spirit level. Wire-view-finder with sight. Patent release. Irisdiaphragm. Tripod-sockets.

	6×9 cm ($2\frac{1}{4} \times 3\frac{1}{4}$ ins.)			$6\frac{1}{2} \times 11$ cm ($2\frac{1}{2} \times 4\frac{1}{4}$ ins.)			$8 \times 10\frac{1}{2}$ cm ($3\frac{1}{8} \times 4\frac{1}{8}$ ins.)		
	V	I	C	V	I	C	V	I	C
Ihagee Anastigmat 1:6.8	1460 HV	—	—	1470 HV	—	—	1475 HV	—	—
Ihagee Anastigmat 1:6.3	1460 KV	1460 KI	—	1470 KV	1470 KI	—	1475 KV	1475 KI	—
Ihagee Anastigmat 1:4.5	1460 MV	1460 MI	1460 MC	—	1470 MI	1470 MC	—	1475 MI	1475 MC
D.-Anast. Veraplan 1:6.8	1460 RV	1460 RI	1460 RC	1470 RV	1470 RI	1470 RC	1475 RV	1475 RI	1475 RC
D.-Anast. Veraplan 1:4.5	—	—	—	—	—	—	—	—	1475 TC
Zeiss Tessar 1:6.3	—	—	1460 WC	—	—	1470 WC	—	—	1475 WC
Zeiss Tessar 1:4.5	—	—	1460 ZC	—	—	1470 ZC	—	—	1475 ZC
Leather-case	7301	—	—	7303	—	—	7285	—	—
				$7\frac{1}{4} \times 12\frac{1}{2}$ cm ($2\frac{7}{8} \times 4\frac{7}{8}$ ins.)			8×14 cm ($3\frac{1}{4} \times 5\frac{1}{2}$ ins.)		
Model V: Automatic shutter series V	Ihagee Anastigmat 1:6.8	1490 HV	—	—	—	—	1485 KV	1485 KI	—
	Ihagee Anastigmat 1:6.3	1490 KV	1490 KI	—	—	—	—	—	—
	Ihagee Anastigmat 1:4.5	—	—	—	—	—	—	—	—
Model I: Ibsorshutter	D.-Anastigm. Veraplan 1:6.8	1490 RV	1490 RI	1490 RC	1485 RV	1485 RI	1485 RC	1485 TC	1485 WC
	D.-Anastigm. Veraplan 1:4.5	—	—	—	—	—	—	—	—
Model C: Compurshutter	Zeiss Tessar 1:6.3	—	—	1490 WC	—	—	—	—	—
	Zeiss Tessar 1:4.5	—	—	—	—	—	—	—	—
	Leather-case	7306	—	—	—	—	7284	—	—

Ihagee Ultrix

For rollfilms 6×9 cm ($2\frac{1}{4} \times 3\frac{1}{4}$ ins.) and plates $6\frac{1}{2} \times 9$ cm ($2\frac{1}{2} \times 3\frac{1}{2}$ ins.)



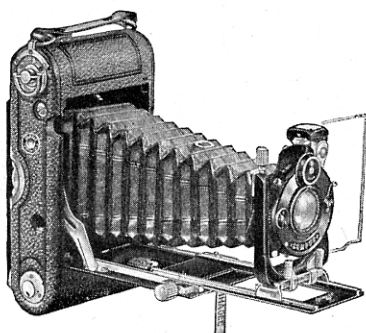
Focusing through radial lever!

The same camera as the preceding "Ultrix" with the exception that this camera is also fitted with a ground-glass-frame and three metal slides in a case, so that it can be used alternatively for rollfilms 6×9 cm ($2\frac{1}{4} \times 3\frac{1}{4}$ ins.) and plates $6\frac{1}{2} \times 9$ cm ($2\frac{1}{2} \times 3\frac{1}{2}$ ins.).

Details: Metal-body drawn in one piece of aluminium, covered with leather. Leather-bellow. Aluminium-base-board and front black enamelled. Brilliant-finder with spirit level. Wire-view-finder with sight. Wire release. Irisdiaphragm. Tripod-sockets. Plate-adaptor with focusing-screen and three metal slides. — Model V: Automatic shutter series V. Model I: Ibsorshutter. Model C: Compurshutter.

	Mod. V	Mod. I	Mod. C
Ihagee Anast. 1:6.8	2960 HV	—	—
Ihagee Anast. 1:6.3	2960 KV	2960 KI	—
Ihagee Anast. 1:4.5	2960 MV	2960 MI	2960 MC
D.-A. Veraplan 1:6.8	2960 RV	2960 RI	2960 RC
Zeiss Tessar 1:6.3	—	—	2960 WC
Zeiss Tessar 1:4.5	—	—	2960 ZC
Extra slide	7143	—	—
3 metal slides in case	7143/3	—	—
Filmpack-adaptor	7203	—	—
Leather-case	7308	—	—





Ultrix Duplex

For rollfilms 6×9 cm ($2\frac{1}{4} \times 3\frac{1}{4}$ ins.)
and plates $6\frac{1}{2} \times 9$ cm ($2\frac{1}{2} \times 3\frac{1}{2}$ ins.)

With double extension and covered rack and pinion.

The Ultrix Duplex is fitted with adapter to enable the use of metal slides for plates $2\frac{1}{2} \times 3\frac{1}{2}$ ins. ($6\frac{1}{2} \times 9$ cm). It is the most complete universal camera of its type. Equally useful for rollfilms or plates and fitted with every movement and refinement including double extension. It is of de Luxe finish and appearance and notwithstanding its complete range of movements is remarkably compact and neat.

Model V: Automatic shutter series V

Model I: Ibsorshutter

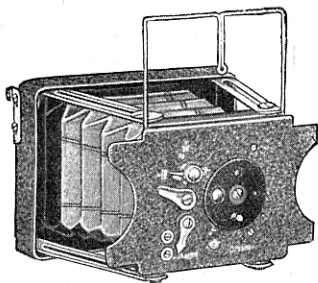
Model C: Compurshutter

Details: Camera body covered with genuine leather. Leather-bellows. Aluminium-base-board and front black enamelled. Rising, falling and sliding front. Infinity stop with automatic release, when adjusted to nearness. Cable release. Irisdiaphragm. Brilliant-finder with spirit level. Tripod-sockets. Plate adapter with focusing-screen and three metal slides.

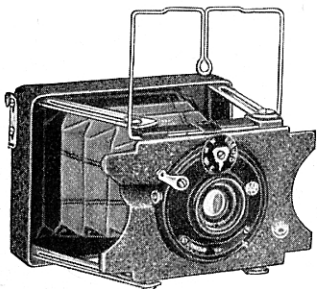
	Model V	Model I	Model C
Ihagee Anastigmat 1:6,8*	1560 HV	—	—
Ihagee Anastigmat 1:6,3*	1560 KV	1560 KI	—
Ihagee Anastigmat 1:4,5*	1560 MV	1560 MI	1560 MC
H. Meyer Double-Anastigmat Veraplan 1:6,8	1560 RV	1560 RI	1560 RC
H. Meyer Double-Anastigmat Veraplan 1:4,5	—	—	1560 TC
Zeiss Tessar 1:6,3*	—	—	1560 WC
Zeiss Tessar 1:4,5*	—	—	1560 ZC
Extra slide	7143	—	—
3 metal slides in case	7143/3	—	—
Filmpack-adaptor	7203	—	—
Leather-case	7308	—	—

* Unsymmetrical anastigmat, back-lens cannot be used alone.

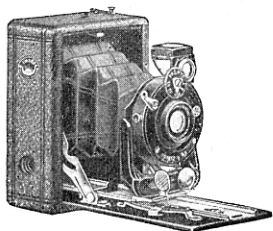




Model A



Model B



Ihagee-Photoknips

For plates and film packs $4\frac{1}{2} \times 6$ cm
($1\frac{3}{4} \times 2\frac{5}{16}$ ins.)

This is a wonderful little camera for the waistcoat pocket, light rigid and excellent finished.

Details: Camera body and lens front are made of aluminium. Leather-bellows. Wire-view-finder. Shutter for time and snapshots $\frac{1}{25}$ — $\frac{1}{100}$ second.

Model A: First-class achromatic lens. Diaphragm with 3 openings. One metal slide.

Model B: Anastigmat, Irisdiaphragm, 3 metal slides and wire release.

Model A:	
Achromatic lens	100
Wire release	7363

Model B:	
Ihagee-Anastigmat 1:6,3	200 K
Portrait attachment	7333

Accessories for both models:	
Extra slide	7141
3 metal slides in case	7141/3
Film-pack-adaptor	7201
Pouch of suede leather	7321
Clamping device for using the camera with tripod	7356

Ihagee-Vest-Pocket

Mikrobie For plates and film packs
 $4\frac{1}{2} \times 6$ cm ($1\frac{3}{4} \times 2\frac{5}{16}$ ins.)

A fully equipped camera in the Vest-Pocket size, of excellent construction and finish and fitted with radial focusing.

Details: Body of camera covered with real leather, leather-bellows. Aluminium-base-board and lens standard black enamelled. Focusing-screen with light-hood. Cable-release. Irisdiaphragm. Brilliant-finder. Tripod-sockets. Three metal slides.

Model V: Automatic shutter series V.

Model C: Compurshutter.

	Mod. V	Mod. C
Ihagee-Anastigmat 1:6,8	500 HV	—
H. Meyer D.-Anast. Veraplan 1:6,8	500 RV	500 RC
H. Meyer D.-Anast. Veraplan 1:4,5	—	500 TC
Extra slide	7141	—
3 metal slides in case	7141/3	—
Film-pack-adaptor	7201	—
Leather-case	7278	—
Pouch of suede leather	7323	—

Ihagee-Derby

For plates and film packs $6\frac{1}{2} \times 9$ cm ($2\frac{1}{2} \times 3\frac{1}{2}$ ins.)

A nicely made and well finished model efficient and of good appearance it is wonderful value at the very moderate price at which it is offered.

Details: Metal body covered with best grained leatherette. Leather-bellows. Focusing-screen with light-hood. Irisdiaphragm. Wire release. Brilliant-finder. Tripod-sockets. One metal slide. Shutter for time and instantaneous $\frac{1}{25}$ — $\frac{1}{100}$ second.

Periscopic lens 1:11	310 FV
Ihagee-Anastigmat 1:6,8	310 HV
Ihagee-Anastigmat 1:6,3	310 KV
Ihagee-Anastigmat 1:4,5	310 MV
Extra slide	7143
Film-pack-adaptor	7203
Best leatherette case for camera and three slides	7266



Ihagee Venus

For plates and filmpacks $6\frac{1}{2} \times 9$ cm
($2\frac{1}{2} \times 3\frac{1}{2}$ ins.)

A horizontal model of best construction fitted with all movements including the new radial focusing lever. An ideal camera for landscape and general photography.

Details: Body of camera covered with genuine leather, leather-bellows, Aluminium-base-board, and lens standard black enamelled. Rising and falling front. Focusing-screen with lighthouse. Patent release. Irisdiaphragm. Brilliant-finder. Wire-view-finder. Tripod-sockets. Three metal slides.

Model V:
Automatic shutter series V

Model I:
Ibsorshutter

Model C:
Compurshutter

	Mod.V	Mod.I	Mod.C
Ihagee Anastigmat 1:6,8	610 HV	—	—
Ihagee Anastigmat 1:6,3	610 KV	610 KI	—
Ihagee Anastigmat 1:4,5	610 MV	610 MI	610 MC
D.-Anast. Veraplan 1:6,8	610 RV	610 RI	610 RC
D.-Anast. Veraplan 1:4,5	—	—	610 TC
Zeiss Tessar 1:6,3	—	—	610 WC
Extra slide	7143	—	—
3 metal slides in case	7143/3	—	—
Film-pack-adaptor	7203	—	—
Best leatherette case for camera and 3 slides	7266	—	—

Ihagee Derby

For plates and filmpacks 9×12 cm ($\frac{1}{4}$ plate)

A nicely made and well finished model efficient and of good appearance it is wonderful value at the very moderate price at which it is offered.

Details: Metal-body covered with best grained leatherette. Leather-bellows. Focusing-screen with light hood. Irisdiaphragm. Wire release. Brilliant-finder. Tripod-sockets. One metal slide. Shutter for time and snapshots $\frac{1}{25}$ — $\frac{1}{100}$ second.

Periscopic lens 1:11	320 FV
Ihagee Anastigmat 1:6,8	320 HV
Ihagee Anastigmat 1:6,3	320 KV
Extra slide	7146
Film-pack-adaptor	7206
Best leatherette case for camera and 3 slides	7268

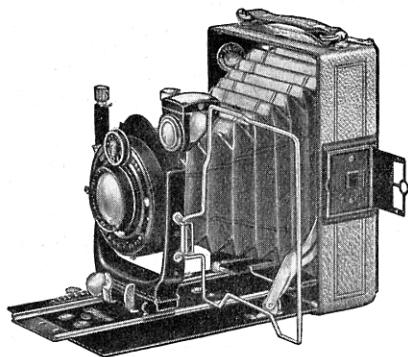
Ihagee Ama

For plates and filmpacks 9×12 cm ($\frac{1}{4}$ plate)

This camera is similar to the above model "Derby", but it is fitted with the new radial focusing lever.

Details: Metal-body covered with best grained leatherette. Leather-bellows. Base-board and front black enamelled. Rising, falling and sliding front. Focusing-screen with light hood. Irisdiaphragm. Wire release. Brilliant-finder with spirit level. Tripod-sockets. One metal slide. Shutter for time and snapshots $\frac{1}{25}$ — $\frac{1}{100}$ second.

Periscopic lens 1:11	420 FV
Ihagee Anastigmat 1:6,8	420 HV
Ihagee Anastigmat 1:6,3	420 KV
Extra slide	7146
Film-pack-adaptor	7206
Best leatherette case for camera and 3 slides	7268



Ihagee Viktor

For plates and filmpacks $6\frac{1}{2} \times 9$ cm ($2\frac{1}{2} \times 3\frac{1}{2}$ ins.), 9×12 cm ($\frac{1}{4}$ plate) and 10×15 cm (postcard)

A really well designed and beautifully finished camera at a moderate figure, fitted with the new radial focusing lever.

Details: Metal-body covered with finest grained leatherette ($\frac{1}{4}$ plate model is covered with genuine leather). Aluminium base-board and front black enamelled. The sizes 9×12 cm ($\frac{1}{4}$ plate) and 10×15 cm (postcard) are fitted with rising, falling and sliding front. Focusing screen with light-hood. Patent-release. Iris-diaphragm. Brilliant-finder with spirit level. Tripod-sockets. Three metal slides.

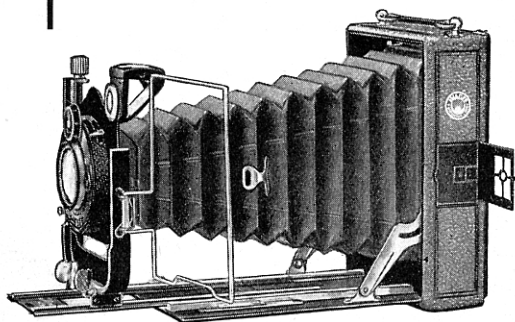
Model V: Automatic shutter series V.

Model I: Ibsorshutter.

Model C: Compurshutter.

Periscopic lens 1:11	
Ihagee Anastigmat 1:6,8	
Ihagee Anastigmat 1:6,3	
Ihagee Anastigmat 1:4,5	
Ihagee Double-Anastigmat 1:4,5	
H. Meyer Double-Anastigmat Veraplan 1:6,8	
Extra slide	
3 metal slides in case	
Film-pack-adaptor	
Best leatherette case for camera and 3 slides	

$6\frac{1}{2} \times 9$ cm ($2\frac{1}{2} \times 3\frac{1}{2}$ ins.)		9×12 cm ($\frac{1}{4}$ plate)		10×15 cm (postcard)	
V	I	V	I	V	I
510FV	—	—	—	—	—
510HV	—	520 HV	—	530 HV	—
510 KV	510 KI	520 KV	520 KI	530 KV	—
510MV	510MI	—	520MI	—	—
—	—	—	520 GI	—	—
510RV	510 RI	520 RV	520 RI	530 RV	530 RI
7143	—	7146	—	7148	—
7143/3	—	7146/3	—	7148/3	—
7203	—	7206	—	7208	—
7266	—	7268	—	7271	—



Ihagee Duplex

For plates $6\frac{1}{2} \times 9$ ($2\frac{1}{2} \times 3\frac{1}{2}$ ins.), 9×12 ($\frac{1}{4}$ plate), 10×15 (postcard) and 13×18 cm ($\frac{1}{2}$ plate)

With double extension and covered rack and pinion. A real camera de Luxe and excelled only by our Luxus-model. It is replete with every possible movement and is an outstanding example of modern camera construction.

Details: Body made of light metal, in size 13×18 cm ($\frac{1}{2}$ plate) = wooden body, covered with finest morocco leather. Base-board black enamelled. Leather bellows. Front black enamelled. Rising, falling and sliding front. Focusing screen with light hood. Patent-release. Irisdiaphragm. Brilliant-finder with spirit level. Wire views finder with sight. Infinity stop with automatic release. Tripod sockets. Three metal slides.

Model V: Automatic shutter series V. Model I: Ibsorshutter. Model C: Compurshutter.

	6½×9 cm (2½×3½ ins.)			9×12 cm (¼ plate)		
	V	I	C	V	I	C
Ihagee Anastigmat 1:6,8*	710 HV	—	—	720 HV	—	—
Ihagee Anastigmat 1:6,3*	710 KV	710 KI	—	720 KV	720 KI	—
Ihagee Anastigmat 1:4,5*	710 MV	710 MI	710 MC	—	720 MI	720 MC
Ihagee Double-Anastigmat 1:4,5	—	—	—	—	720 GI	720 GC
Ihagee Trioplan 1:3,5*	**	—	710 PC	—	—	720 PPC
H. Meyer Double-Anastigmat Veraplan 1:6,8	710 RV	710 RI	710 RC	720 RV	720 RI	720 RC
H. Meyer Double-Anastigmat Veraplan 1:4,5	—	—	710 TC	—	—	720 TC
Zeiss - Tessar 1:6,3*	—	—	710 WC	—	—	720 WC
Zeiss - Tessar 1:4,5*	—	—	710 ZC	—	—	720 ZC
Extra slide	7143	—	—	7146	—	—
3 metal slides in case	7143/3	—	—	7146/3	—	—
Film-pack - adapter	7203	—	—	7206	—	—
Leather - case for camera and three slides	7281	—	—	7283	—	—
	10×15 cm (postcard)			13×18 cm (½ plate)		
Ihagee Anastigmat 1:6,8*	730 HV	—	—	—	—	—
Ihagee Anastigmat 1:6,3*	730 KV	—	—	—	—	—
Ihagee Anastigmat 1:4,5*	—	—	730 MC	—	—	—
Ihagee Double-Anastigmat 1:4,5	—	—	—	—	—	—
Ihagee Trioplan 1:3,5*	—	—	—	—	—	—
H. Meyer Double-Anastigmat Veraplan 1:6,8	730 RV	730 RI	730 RC	740 RV	740 RI	740 RC
H. Meyer Double-Anastigmat Veraplan 1:4,5	—	—	730 TC	—	—	—
Zeiss - Tessar 1:6,3*	—	—	730 WC	—	—	—
Zeiss - Tessar 1:4,5*	—	—	730 ZC	—	—	—
Extra slide	7148	—	—	7151	—	—
3 metal slides in case	7148/3	—	—	7151/3	—	—
Film-pack - adapter	7208	—	—	7211	—	—
Leather - case for camera and three slides	7286	—	—	7288	—	—

* Unsymmetrical anastigmat, back-lens cannot be used alone. ** In size $6\frac{1}{2} \times 9$ ($2\frac{1}{2} \times 3\frac{1}{2}$ ins.) = 1:3,8.

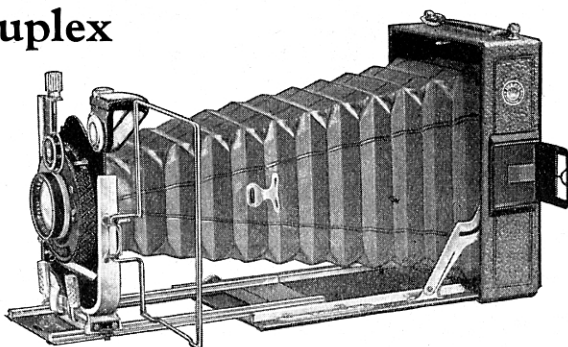


Ihagee Luxus Duplex

For plates and film packs 6 1/2 x 9 cm (2 1/2 x 3 1/2 ins.), 9 x 12 cm (1/4 plate), 10 x 15 cm (postcard), 13 x 18 cm (1/2 plate)

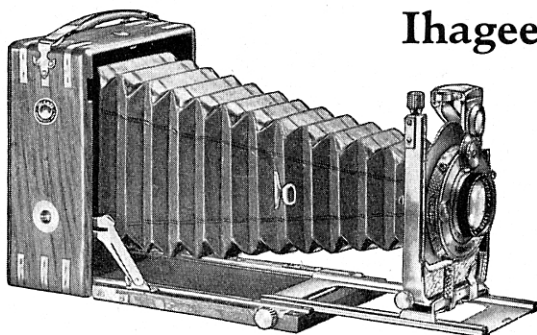
With double extension and covered rack and pinion. The "Luxus-Duplex" represents the very last word in refinement; perfect in appearance finish and performance it makes a special appeal to those who desire the best.

Details: Body of camera made of light metal, in size 13 x 18 cm (1/2 plate) = wooden body, and covered with finest morrocco leather. Leather-bellows. Aluminium-base-board black enamelled. Lens standard of solid brass, heavily nickelled. Rising, falling and sliding front. Focusing-screen with light hood. Patent release. Irisdiaphragm. Brilliant-finder with spirit level. Wire-view-finder with sight. Infinity stop with automatic release. Tripod-sockets. Three metal slides covered with leather. Compurshutter.



	6 1/2 x 9 cm (2 1/2 x 3 1/2 ins.)	9 x 12 cm (1/4 plate)	10 x 15 cm (postcard)	13 x 18 cm (1/2 plate)
Ihagee Anastigmat 1:4.5*	810 MC	820 MC	830 MC	—
Ihagee Trioplan 1:3.5*†	810 PC	820 PPC	—	—
H. Meyer Double Anastigmat Veraplan 1:4.5	810 TC	820 TC	830 TC	840 TC
Zeiss Tessar 1:4.5*	810 ZC	820 ZC	830 ZC	840 ZC
Zeiss Tessar 1:3.5*	—	820 QC	—	—
Extra slide covered with leather	7171	7173	7176	7179
3 metal slides in case covered with leather	7171/3	7173/3	7176/3	7179/3
Film-pack-adaptor covered with leather	7231	7233	7239	7239
Leather-case for camera and 3 slides	7281	7283	7286	7288

* Unsymmetrical anastigmat, back-lens cannot be used alone. † In size 6 1/2 x 9 cm (2 1/2 x 3 1/2 ins.) = 1:3.8



Ihagee Tropen Neugold

For plates and film packs 6 1/2 x 9 cm (2 1/2 x 3 1/2 ins.), 9 x 12 cm (1/4 plate) and 10 x 15 cm (postcard)

With double extension and covered rack and pinion. The tropical "Neugold" is the Luxus-Duplex in tropical form. In addition to the special refinements of the regular Luxus model it is constructed of selected teak wood reinforced by brass binding and will withstand the worst climatic conditions. Specially recommended for travellers, expeditions or colonial use.

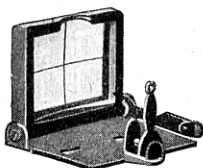
Details: Camera body made of best teak brilliantly polished, with countersunk brass angles. Bellows of finest brown leather. Brass-front U-shaped.

Rising, falling and sliding front. Focusing-screen with light hood. Brass fittings. Patent release. Irisdiaphragm. Brilliant-finder with spirit level. Infinity stop with automatic release when adjusted to nearness. Tripod-sockets. Three German silver slides. Compurshutter.

	6 1/2 x 9 cm (2 1/2 x 3 1/2 ins.)	9 x 12 cm (1/4 plate)	10 x 15 cm (postcard)
Ihagee Anastigmat 1:4.5*	910 MC	920 MC	930 MMC
Ihagee Trioplan 1:3.5*†	910 PC	920 PPC	—
Hugo Meyer Double Anastigmat Veraplan 1:6.8	910 RC	920 RC	930 RC
Hugo Meyer Double Anastigmat Veraplan 1:4.5	910 TC	920 TC	930 TC
Zeiss Tessar 1:4.5*	910 ZC	920 ZC	930 ZC
Extra German silver slide	7161	7163	7166
3 German silver slides in case	7161/3	7163/3	7166/3
German silver film-pack-adaptor	7221	7223	7226
Leather-case for camera and 3 slides	7281	7283	7286

* Unsymmetrical anastigmat, back-lens cannot be used alone.

† In size 6 1/2 x 9 cm (2 1/2 x 3 1/2 ins.) = 1:3.8.

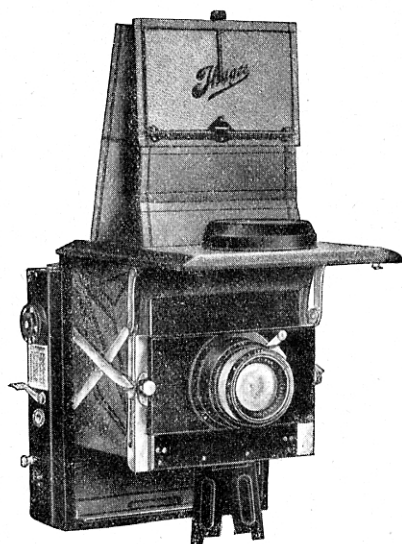


Newton Finder

No. 7081

When opening the finder the sighter automatically sets up and is closing itself as well automatically when the finder is shut. For camera up to 13 x 18 cm (1/2 plate).





Ihagee Patent Folding Reflex

For plates and film packs $6\frac{1}{2} \times 9$ cm ($2\frac{1}{2} \times 3\frac{1}{2}$ ins.), 9×12 cm ($\frac{1}{4}$ plate) and 10×15 cm (postcard)

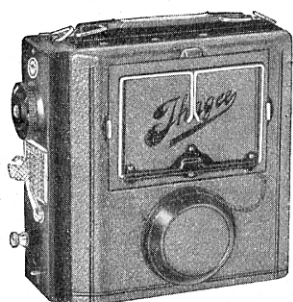
Our Ihagee Patent Folding Reflex is only slightly larger than an ordinary folding-camera. The camera can be opened ready for exposure with one movement and at the same time is automatically focused for "infinity". The shutter (several times patented), giving speeds from $\frac{1}{15}$ — $\frac{1}{1000}$ second, has a covered mechanism a self-capping blind and works entirely without a shock. The mirror rests on a base thus ensuring that it maintains an angle of 45° . The camera is covered with best morocco leather and equipped with leather bellows. A shoulder strap is supplied. The Ihagee Patent Folding Reflex is an instrument of the very highest class, absolutely rigid, when extended. It is beautifully finished and of elegant appearance and very compact when closed.

Equipment: 3 metal slides covered with leather in leather-case. Film-pack-adaptor covered with leather. Shoulder strap. Patent release. Wire-view-finder with sight.

Size	$6\frac{1}{2} \times 9$ cm ($2\frac{1}{2} \times 3\frac{1}{2}$ ins.)	9×12 cm ($\frac{1}{4}$ plate)	10×15 cm (postcard)
Focusing distance	12 cm	15 cm	16,5 cm

Ihagee Trioplan 1:3,5	—	1120 P	—
Hugo Meyer Double Anast. Veraplan 1:4,5	1110 T	1120 T	1130 T
Meyer Plasmatt 1:4,5	1110 Y	1120 Y	1130 Y
Zeiss Tessar 1:4,5	1110 Z	1120 Z	1130 Z
Extra slide covered with leather	7171	7173	7176
3 metal slides covered with leather in leather-case . .	7171/3	7173/3	7176/3
Leather-case for camera and 3 slides	7291	7293	7296
Yellow-screen for Veraplan . . .	7383	7386	7388
Yellow-screen for Tessar	7393	7396	7398

Further details on demand!



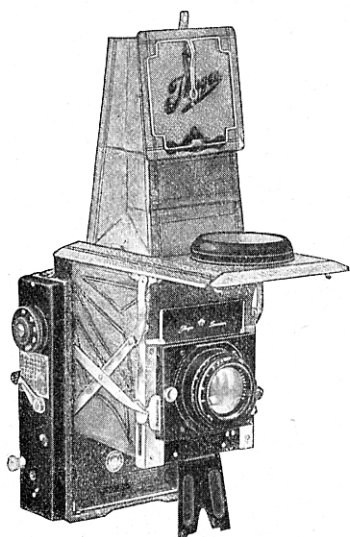
Ihagee Patent Folding Reflex

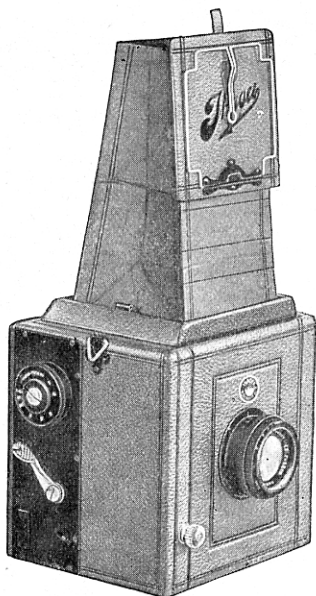
(with revolving back) For plates and film packs $6\frac{1}{2} \times 9$ cm ($2\frac{1}{2} \times 3\frac{1}{2}$ ins.) and 9×12 cm ($\frac{1}{4}$ plate)

The Square Folding Reflex differs from the previous model in so far as the back focusing-glass-frame can be rotated for oblong or upright pictures without any alteration in the position of the camera. For this reason the camera is more oblong in shape.

Size	$6\frac{1}{2} \times 9$ cm ($2\frac{1}{2} \times 3\frac{1}{2}$ ins.)	9×12 cm ($\frac{1}{4}$ plate)
Focusing distance . . .	15 cm	16,5 cm

D.-Anastigmat Veraplan 1:4,5	1910 T	1920 T
Hugo Meyer Plasmatt 1:4,5	1910 Y	1920 Y
Zeiss Tessar 1:4,5	1910 Z	1920 Z
Extra slide covered with leather	7171	7173
3 metal slides covered with leather in leather-case . .	7171/3	7173/3
Leather-case for camera and 3 slides	7292	7295





Ihagee Serien Reflex

For plates and filmpacks $6\frac{1}{2} \times 9$ cm ($2\frac{1}{2} \times 3\frac{1}{2}$ ins.) and 9×12 cm ($\frac{1}{4}$ plate)

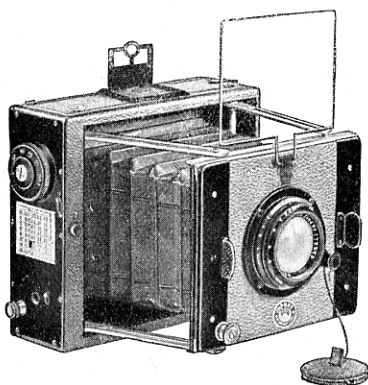
A High-Quality-Reflex-Camera at a popular price!

With rotating ground-glass-frame!

Specification:

Wooden body covered with real leather. Focusing screen with light-hood at the back of the camera and over the reflector. Focal-plane-shutter with self-capping blind for time, "bulb" and instantaneous exposures from $\frac{1}{15}$ — $\frac{1}{1000}$ second. Direct vision-finder with sighter. Lens in focusing-mount. 3 metal slides. Shoulder-strap. Tripod-screw-nut.

Size	$6\frac{1}{2} \times 9$ cm ($2\frac{1}{2} \times 3\frac{1}{2}$ ins.)	9×12 cm ($\frac{1}{4}$ plate)
Focusing distance . . .	12 cm	15 cm
Ihagee Anastigmat 1:4,5	2110 M	2120 M
Ihagee Trioplan 1:3,5	2110 P	2120 P
Hugo Meyer Double Anastigmat Veraplan 1:4,5	2110 T	2120 T
Hugo Meyer Plasmal 1:4,5	2110 Y	2120 Y
Zeiss Tessar 1:4,5	2110 Z	2120 Z
Zeiss Tessar 1:3,5	2110 Q	2120 Q
Extra slide	7143	7146
3 metal slides in case	7143/3	7146/3
Film-pack-adaptor	7203	7206
Leather-case for camera and 3 slides	7290	7294



Ihagee Sport Kamera

For plates and filmpacks 9×12 cm ($\frac{1}{4}$ plate)

The best camera for sport and press photographs! Simple in construction. Reliable in action.

One touch and the camera is ready for work and sharply focused at infinity. Close focusing is done by the focusing mount of the lens.

Details: Wooden body covered with real leather. Metal-lens-support fitted with rising movement. The focal-plane-shutter for time, "bulb" and instantaneous exposures of $\frac{1}{15}$ — $\frac{1}{1000}$ second has a selfcapping blind and works reliably without vibration. Direct vision-finder with sight. 3 metal slides in case. Tripod-sockets.

Focusing distance 15 cm

Ihagee Anastigmat 1:4,5	1820 M
Ihagee Trioplan 1:3,5	1820 P
Hugo Meyer Double-Anastigmat Veraplan 1:4,5	1820 T
Hugo Meyer Plasmal 1:4,5	1820 Y
Zeiss Tessar 1:4,5	1820 Z
Zeiss Tessar 1:3,5	1820 Q
Extra slide	7146
3 metal slides in case	7146/3
Film-pack-adaptor	7206
Leather-case for camera and 3 slides	7289



Ihagee Focal Plane Duplex

For plates and film packs 6 1/2 x 9 cm (2 1/2 x 3 1/2 ins.), 9 x 12 cm (1/4 plate) and 10 x 15 cm (postcard)

A horizontal model with double extension and covered rack and pinion. The Focal Plane Duplex is constructed with the same care and finish as our regular Duplex. The addition of a first class focal-plane-shutter is a great advantage, giving a combined range of speeds from 1 second to 1/1000 of a second. The Focal Plane Duplex is therefore a truly universal instrument, capable of every class of photographic work. This model is fitted with a Central-shutter as well as with a focal-plane-shutter (several times patented). The latter has covered mechanism, self-capping blind and allows exposures for time and snap-shots (1/15 to 1/1000 second) and works entirely without a vibration.

Details: Camera body made of well seasoned wood covered with genuine leather. Aluminium-base-board black enamelled. Leather-bellows. Focusing-screen with light hood. Rising, falling and sliding front. Patent release. Irisdiaphragm. Brilliant-finder with spirit level. Wire-view-finder with sight. Infinity stop with automatic release. Tripod-sockets. 3 metal slides covered with leather.

Model I: Focal-plane-shutter and Ibsorshutter. Model C: Focal-plane-shutter and Compurshutter

	6 1/2 x 9 cm (2 1/2 x 3 1/2 ins.)		9 x 12 cm (1/4 plate)		10 x 15 cm (postcard)
	I	C	I	C	C
Ihagee Anastigmat 1:4.5*	1010 MI	1010 MC	1020 MI	1020 MC	1030 MC
Ihagee Trioplan 1:3.5*	—	1010 PPC	—	1020 PPC	1030 PPC
Hugo Meyer Double Anastigmat Veraplan 1:4.5	1010 TI	1010 TC	1020 TI	1020 TC	1030 TC
Zeiss Tessar 1:4.5*	1010 ZI	1010 ZC	1020 ZI	1020 ZC	1030 ZC
Zeiss Tessar 1:3.5*	—	1010 QC	—	1020 QC	1030 QC
Extra slide covered with leather	7171	—	7173	—	7176
3 metal slides covered with leather in leather-case	7171/3	—	7173/3	—	7176/3
Filmpack-adaptor covered with leather	7231	—	7233	—	7236
Leather-case for camera and 3 slides	7311	—	7313	—	7315

* Unsymmetrical anastigmat, back-lens cannot be used alone

Ihagee Focal Plane Stereo

For plates and film packs 10 x 15 cm (postcard).

The Focal Plane Stereo is fitted both with a Central-lens-shutter and with a Focal-plane-shutter. The latter has a self-capping blind and is adapted for time, "bulb" and instantaneous exposures of 1/15—1/1000 second.

Details: Wooden body covered with real leather. Leather-bellows. Rising, falling and sliding front. Wire release. Irisdiaphragm. Direct vision-finder with sighter. Infinity stop automatically released when not in use. 3 metal slides covered with leather. Tripod-sockets.

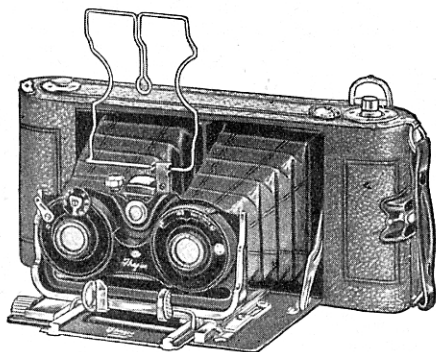
Model V: Focal-plane-shutter and automatic shutter series V

Model I: Focal-plane-shutter and Ibsoshutter

Model C: Focal-plane-shutter and Compurshutter

Focusing distance 12 cm	V	I	C
Ihagee Anastigmat 1:6.3	2430 KV	2430 KI	—
Hugo Meyer Double Anastigmat Veraplan 1:4.5	—	—	2430 TC
Zeiss Tessar 1:4.5	—	—	2430 ZC
Extra slide covered with leather	7176	—	—
3 metal slides covered with leather	7176/3	—	—
Filmpack-adaptor covered with leather	7236	—	—
Leather-case for camera and 3 slides	7315	—	—





Ihagee Ultrix Stereo

For rollfilms $7\frac{1}{4} \times 12\frac{1}{2}$ cm ($2\frac{7}{8} \times 4\frac{7}{8}$ ins.)

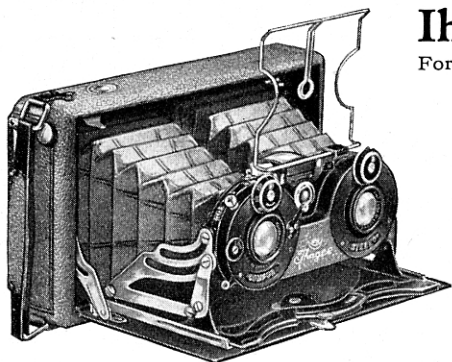
With covered rack and pinion. The Ultrix Stereo should make a special appeal to the Stereoscopic worker. Hitherto an efficient roll film camera for stereo pictures has been entirely lacking, but the demand for such an instrument is now completely met by the Ultrix Stereo. In every way a first class instrument, it is beautifully finished and is fitted with every necessary movement.

Details: Camera body covered with genuine leather. Leather-bellows. Base-board black enamelled. Front of solid brass, heavily nickelled. Brilliant-finder. Wire view finder. Irisdiaphragms. Patent release. Infinity stop with automatic release, when adjusted to nearness. Tripod socket.

Model V: Automatic shutter series V.

Model C: Compurshutter.

	Model V	Model C
Ihagee Anastigmat 1:6,8	1690 HV	—
Hugo Meyer Double-Anastigmat Veraplan 1:4,5	—	1690 TC
Zeiss Triotar 1:6,3	—	1690 UC
Zeiss Tessar 1:6,3	—	1690 WC
Leather-case	7306	—



Ihagee Stereo Automat

For plates and film packs 6×13 cm ($2\frac{1}{2} \times 5\frac{1}{8}$ ins.)

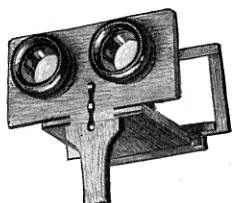
Adjustment with new radial lever. The smallest and most convenient Stereo-camera taking the popular 6×13 size. Very flat for the pocket. The automatic opening of this camera is a great advantage, and this coupled with its beautiful finish should make it a first favourite with stereoscopic enthusiasts. When opening the camera the lenses are automatically focused for "infinity", the camera is therefore immediately ready for exposure.

Details: Body covered with genuine leather. Leather-bellows. Base-board black enamelled. Nickel fittings. Focusing screen with light hood. Brilliant-finder with spirit level. Wire views finder. Patent release. Irisdiaphragms. Tripod socket. Three metal slides.

Model V: Automatic shutter series V.

Model C: Compurshutter.

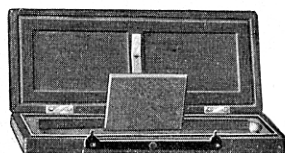
	Model V	Model C
Ihagee Anastigmat 1:6,8	1715 HV	—
Hugo Meyer Double-Anastigmat Veraplan 1:4,5	—	1715 TC
Zeiss Triotar 1:6,3	—	1715 UC
Zeiss Tessar 1:6,3	—	1715 WC
Extra slide	7153	—
Three metal slides in case	7153/3	—
Film-pack-adaptor	7213	—
Leather-case for camera and three slides	7316	—



Hand Stereoscopes

The quality of the reproduction is not only depending on the camera. For the viewing of stereo-pictures a good stereoscope is necessary. Our "Stereoviewer" is a stereoscope of best workmanship with first-class achromatic lenses. It may be used for transparencies of the correct size or for paper-pictures any size. The apparatus are made of mahogany. The picture-holder is adjustable to different distances.

Size: 6×13 cm ($2\frac{1}{2} \times 5\frac{1}{8}$ ins.) 7091
Size: $7\frac{1}{4} \times 12\frac{1}{2}$ cm ($2\frac{7}{8} \times 4\frac{7}{8}$ ins.) 7093



Stereo Printer

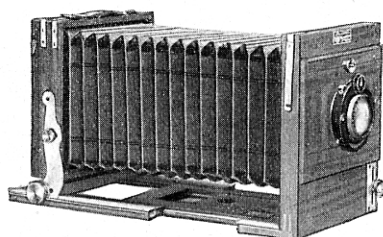
The use of this printer obviates the necessity of cutting the negative or print, stereograms on paper or glass being obtained simply by transposing the ends of both negative and copy.

Size: 6×13 cm ($2\frac{1}{2} \times 5\frac{1}{8}$ ins.) 7101
Size: $7\frac{1}{4} \times 12\frac{1}{2}$ cm ($2\frac{7}{8} \times 4\frac{7}{8}$ ins.) 7103



Ihagee Corona

For plates and Filmpacks 10×15 cm (postcard), 12×16,5 cm (1/2 plate), 13×18 cm and 18×24 cm (1/1 plate)



Our Corona is a master-piece of wood-working!

Details:

The camera is built square. Polished mahogany. Stone cloth-bellows with leather-edges. Rising, falling and sliding lens-board. Brass-fittings. Double base-extension. Double slanting rack and pinion. Tilting focusing-screen frame. Adjusting frame for vertical and horizontal. Tripod-socket. 3 double wooden slides with aluminium sheaths.

	10×15 cm (postcard)	12×16½ cm (½ plate)	13×18 cm	18×24 cm (1/1 plate)
Without lens and shutter	2030	2035	2040	2045
With lens and Compurshutter:				
Hugo Meyer Double Anastigmat Veraplan 1:6,8	2030 RC	2035 RC	2040 RC	2045 RC
Hugo Meyer Double Anastigmat Veraplan 1:5,4	2030 SC	2035 SC	2040 SC	2045 SC
Hugo Meyer Double Anastigmat Veraplan 1:4,5	2030 TC	2035 TC	2040 TC	2045 TC
Extra-lens-board	2030 a	2035 a	2040 a	2045 a
Double wooden slide	7181	7183	7186	7188
Sailcloth-case	7511	7513	7516	7518

Ihagee-set

An optical miracle!

The Ihagee Outfit trebles the usefulness of your camera. It is a first class quality and is made by the originators of this invaluable accessory. The set consists of a spring holder which fits any ordinary lens hood without any adjustment, and into which can be slipped at will any one of the four lenses supplied. These are (1) Wide angle; (2) Portrait; (3) copying, and (4) telephoto lens. These lenses are correctly worked and give a beautifully sharp image without any of the distortion present with inferior sets. Ihagee sets are made in three sizes. Size I has a lens diameter of 31 mm, size II has a diameter of 40 mm and size III has a diameter of 52 mm. Size III can also be recommended for projectors, epidiscopes and cinematographs in order to change the enlargement at will during a performance or demonstration. Each Ihagee-set is furnished with our trade-mark and the firm "Ihagee". Besides each Ihagee-lens has our trade-mark on the packing.



	Size I	Size II	Size III
Holder with lenses in case	7003	7006	7008
Single Ihagee-lenses	7013	7016	7018
Single Ihagee-holders	7023	7026	7028
Yellow-screens fitting into above holders (light, medium, dark)	7033	7036	7038

Our lens sets were originally introduced by us under the name "Vera" set. Inferior sets having been sold under a name closely approximating to the word Vera. We now list these sets under our trade-mark "Ihagee" which is protected by law.

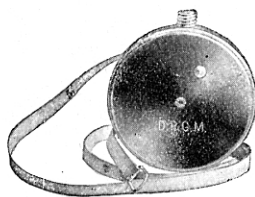


Ihagee Rapid Yellow Screens

Yellow-screens serve the purpose of reproducing the light values of natural colours in their various degrees of intensity. Only the so-called orthochromatic plates can be used for this purpose. Photographic plates are sensitive to blue, i. e. blue objects appear blackest in the negative and consequently whitest in the picture. On the other hand yellow-coloured objects which, to our eye, appear the lightest-coloured of all, come out black in the photographic print. The effect of yellow screens is to render yellow brighter than blue in the picture and so on. This is owing to the fact that the yellow-screen absorbs the blue rays, thus allowing the yellow colours to assert themselves better. The Ihagee Rapid Yellow Screens are in the highest degree permeable to light, so that only a short increase in the exposure is necessary, whereas many of yellow-screens sold in the trade are of such a deep-brown colour as to require an exposure three times as long as that needed with our screens. — The Ihagee Rapid Yellow Screens are supplied in three shades: light, medium and dark.

	Size I	Size II	Size III
Holder with 3 Rapid Yellow Screens in case	7004	7007	7009
Single Ihagee Rapid Yellow Screens . . .	7014	7017	7019
Single Holders see page 14			

Ihagee Distance-Meter "Dipho"



Estimating the distance of persons or objects to be photographed correctly is the main condition for the production of sharp pictures. Particularly in the case of rollfilms in which it is not possible to check the sharpness of the image on a ground-glass-plate, a wrong estimate of distance has often led to failures. — The "Dipho" Distance-Meter is an unfailing remedy. — This small instrument is, in truth, the Egg of Columbus. How many distance-meters are there not already on sale every-one of which suffers from excessive complexity of structure! None of them are anything like as simple and accurate as the "Dipho". The "Dipho" is fastened by a bolt-screw

into the tripod-screw-nut. The person to be photographed takes the end of the measuring-tape with him or her to the point where they propose to stand, thereby enabling the photographer to read off the exact distance. A pressure on a button allows the tape to snap back automatically into the case. The measuring-tape is 5 metres long, the half and whole metres are clearly marked off. Particularly with rapid-lenses and rollfilm cameras the "Dipho" is an indispensable device for ensuring sharply-focused pictures. No. 7780

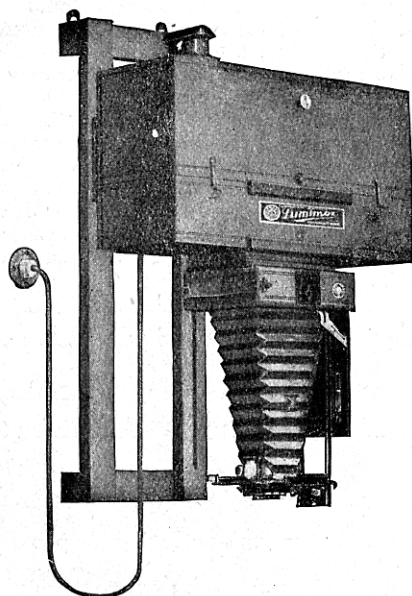
Ihagee Multimax



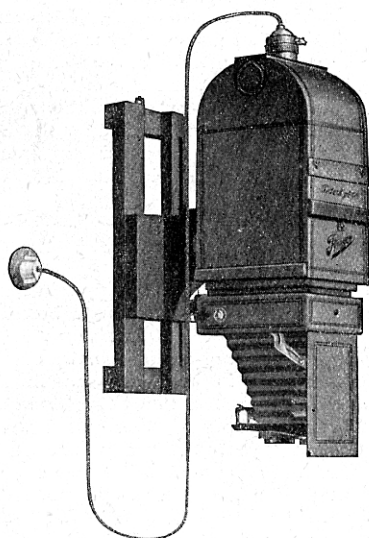
The Multimax is a High-Speed Copying Apparatus enabling photographers to make contact-prints on bromide or gaslight-paper with greater speed and accuracy than is possible with the ordinary copying-frame. As the source of light remains constant, it is easy to ascertain the correct exposure for every negative, this being done by means of a strip of bromide paper on which various exposures are made. On development it is apparent which part of the strip was correctly exposed. When the correct time has once been established, it is easy even for amateurs to make copies in large numbers. The Multimax can be connected to any electric circuit. It is fitted with an adaptor and switch, as well as with threads for the electric bulbs in use.

9×12 cm (1/4 plate)	10×15 cm (postcard)	13×18 cm (1/2 plate)
7782	7784	7786





Enlargements made easy with "LUMIMAX"



The make of enlargements with the "Lumimax" is very easy and does not cause one more trouble than the make of a contact print. The "Lumimax" apparatus makes you independent on the size of your camera and you are able to make prints from your negatives in every size you like. "Lumimax" enlargements are beautiful mural ornaments. The "Lumimax" is used in conjunction with one's own camera, so that the lens, with which the picture was made, is applied to the enlargement. Accordingly natural perspectives and perfect sharpness are guaranteed. Please ask for our special "Lumimax" prospectus in which "Lumimax" apparatus are exactly described.

