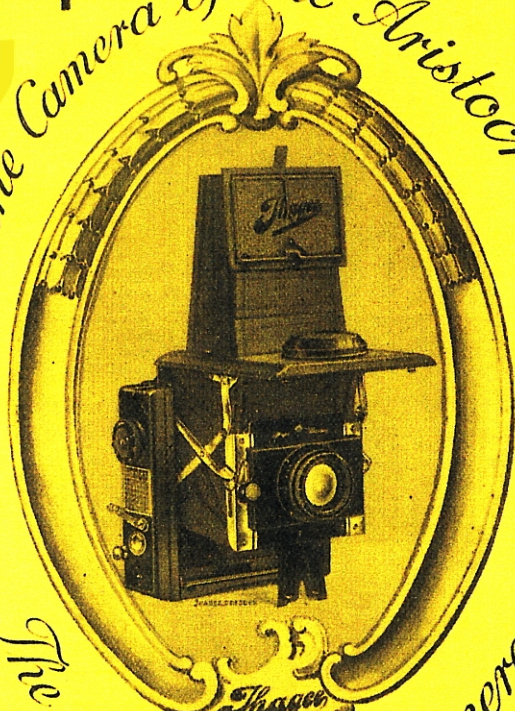


IHAGEE CAMERAS



IHAGEE PATENT-FOLDING-REFLEX

The Camera of the Aristocrat



The Aristocrat of cameras

AUTO. ULTRIX No. 2860

For Roll Films $3\frac{1}{2} \times 2\frac{1}{4}$,
6 × 9 cm.

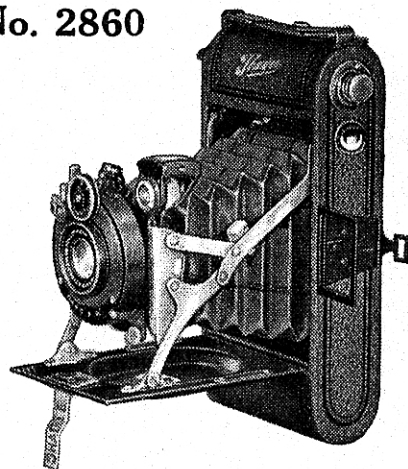
The Easiest Roll Film Camera
to load and unload

A newly-designed model that opens automatically on pressing a button and brings the lens into focus for infinity. Focussing "close-ups" is provided for by a Helical Mount.

Very light and extremely rigid.

All aluminium body, and nickelled struts. Film pressure plate. Covered leatherette and leather bellows.

Cable release. Brilliant and wire frame finders.



No.		£	s.	d.
2860 KV	Ihagee Anastigmat F/6.3, Zenith 3-speed Shutter	3	7	6
2860 MI	Ihagee Anastigmat F/4.5, Ibsor 7-speed Shutter	5	5	0
2860 ZSC	Zeiss Tessar Anastigmat F/4.5 in Compur Shutter, with self Time release	8	15	0
—	Leather Case	0	7	6
—	Leather Case, velvet lined with lock and key	0	12	6
	The Auto Ultrix cameras can be supplied fitted with a plate back and focussing screen.			
	The additional price including 3 Single Metal Slides is ..	1	5	0

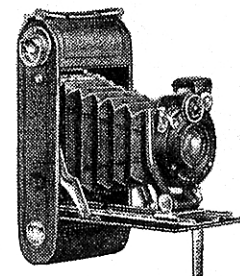
ULTRIX SIMPLEX

For Roll Films $3\frac{1}{2} \times 2\frac{1}{4}$ ins.—6 × 9 cm.

" " $4\frac{1}{2} \times 2\frac{1}{4}$ ins.—6½ × 11 cm.

Notwithstanding its very low price the Ultrix-Simplex is constructed with care, precision and finish: an ideal camera for beginners, and capable of splendid results. Such value could not be offered but for the quantity production made possible by the huge demand for this model.

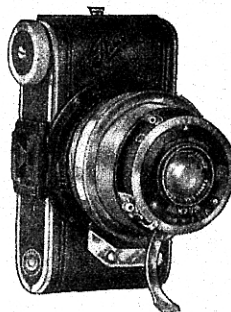
Details: Body made of metal, covered with best leatherette. Leather bellows, black enamelled base-board and front focussing adjustment to scale. Cable release. Iris diaphragm. Brilliant finder. Tripod sockets. Shutter for time and instantaneous, 1/25th to 1/100th second, 3 speeds.



	$3\frac{1}{2} \times 2\frac{1}{4}$ ins.	£	s.	d.	$4\frac{1}{2} \times 2\frac{1}{4}$ ins.	£	s.	d.
Periscopic Lens .. F/11	1360 FV	2	10	0	1370 FV	3	0	0
Ihagee Anastigmat F/6.8	1360 HV	2	17	6	1370 HV	3	7	6
Ihagee Anastigmat F/4.5	1360 MV	3	10	0	1370 MV	4	10	0
Leather Case	—	0	7	6	—	0	10	0

WEENY-ULTRIX

For Roll Films V.P.K. No. 127 $1\frac{1}{8} \times 2\frac{1}{2}$ in. (4 × 6.5 cm.)



*The Outstanding
Novelty of the Year!*

The WEENY - ULTRIX will rank as the most important novelty in Pocket Film Cameras that has been introduced for some years. The ingenious manner by which lenses of 7 cm. focus are adapted without using a bellows body will at once appeal to critical photographers.

The Lens and Shutter are mounted in a double-action right and left-handed quick thread Helical Mount, which is absolutely rigid and ensures perfectly sharp focussing from infinity to as close as half a metre (20 inches)!

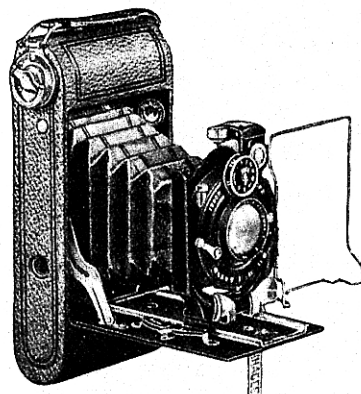
A safety device is also incorporated, which automatically puts the shutter out of action when the camera is closed. A new model camera support is provided, which folds round the lens jacket.

These features are distinct novelties and improvements, and added to the beautiful finish of the camera, the body of which is all metal and covered in fine grain leather, make it an instrument that is without a rival.



Prices

	£	s.	d.
With Ihagee Anastigmat F/4.5, Pronto Shutter	4	7	6
" " " F/4.5, Compur	6	0	0
" Zeiss Tessar Anastigmat F/4.5, Compur Shutter	8	17	6
" " " F/3.5	10	0	0
" Schneider " F/3.5	8	15	0
Lumimax Enlarger for Weeny-Ultrix	2	10	0



IHAGEE ULTRIX

FOR ROLL FILMS

With Radial Focussing Lever

An infinitely superior method of focussing, as the distance scale figures are on a wide arc, and very easily seen.

The Ihagee Ultrix is a roll film camera of the highest class. Its construction combines portability, lightness and rigidity in a remarkable degree, while the finish leaves nothing to be desired.

Details: Metal body drawn in one piece of aluminium, covered with real leather. Leather bellows. Aluminium baseboard and front, black enamelled. Focussing by new radial lever. Brilliant finder with spirit level. Wire view finder, with sight. Cable release. Iris diaphragm. Tripod bushes.

Prices	No. 1460 6 × 9 cm. (3½ × 2½ ins.)	No. 1470 6½ × 11 cm. (4½ × 3½ ins.)	No. 1475 8 × 10½ cm. (4½ × 3½ ins.)	No. 1485 8 × 14 cm. (5½ × 3½ ins.)
	£ s. d.	£ s. d.	£ s. d.	£ s. d.
Ihagee Anastigmat F/6.3, in 3-speed Shutter	3 17 6	4 5 0	5 10 0	—
Ihagee Anastigmat F/4.5, in Ibsor 7-speed shutter	5 17 6	6 15 0	8 0 0	—
Ihagee Anastigmat F/4.5, in Self-Release Compur Shutter	7 12 6	8 10 0	9 15 0	12 12 0
Zeiss Tessar F/4.5, in Self-Release Compur Shutter	9 2 6	10 5 0	11 10 0	14 15 0
Leather Case, velvet lined, shoulder strap and lock and key	0 12 6	0 14 0	0 15 0	1 0 0

IHAGEE ULTRIX

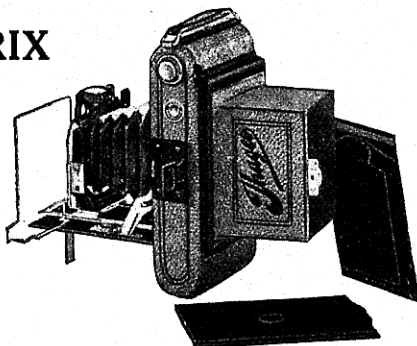
No. 2960

FOR ROLL FILMS AND PLATES

With Radial Focussing Lever and Wide Distance Scale

This Camera is substantially the same as the Ultrix No. 1460, but is adapted for 3½ × 2½ in. plates (6.5 × 9 cm.) as well as Roll Films.

The equipment includes Focussing Screen and 3 metal Dark Slides.

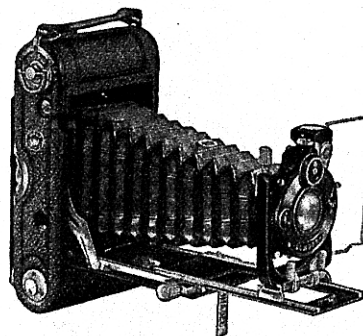


No.	Prices
	£ s. d.
2960 KI	Ihagee Anastigmat F/6.3, in 7-speed Ibsor Shutter .. 6 2 6
2960 MSC	Ihagee Anastigmat F/4.5, in Compur Shutter, with Self-Release .. 8 7 6
2960 ZSC	Zeiss Tessar F/4.5, in Compur Shutter, with Self-Release .. 10 2 6
—	Extra Slides .. 0 2 0
—	Film pack adapter .. 0 7 0
—	Leather Case, velvet lined, for camera only .. 0 12 6
—	Ditto, ditto, ditto, for complete outfit .. 1 1 0

ULTRIX DUPLEX

No. 1560

For Roll Films 3½ × 2½ ins.—6 × 9 cm. and Plates 3½ × 2½ ins.—6½ × 9 cm.



The Ultrix Duplex is fitted with adapter to enable the use of metal slides for plates 3½ × 2½ ins. (6½ × 9 cm.). It is the most complete universal camera of its type. Equally useful for roll films or plates and fitted with every movement and refinement, including double extension. It is of de luxe finish and appearance and notwithstanding its complete range of movements is remarkably compact and neat.

Details: Camera body covered with genuine leather. Leather bellows. Aluminium baseboard and front black enamelled. Rising, falling and cross-front. Infinity stop with automatic release when adjusted for near objects. Cable release. Iris diaphragm. Brilliant finder with spirit level. Tripod sockets. Plate adapter with focussing-screen and three metal slides. Compur shutter with self-release.

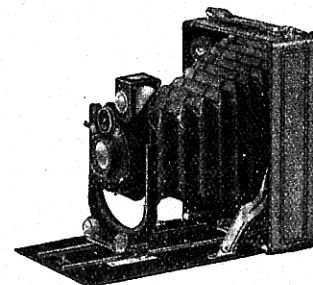
No.	Prices
	£ s. d.
1560 KI	Ihagee Anastigmat F/6.3 in Ibsor 7-speed shutter .. 8 8 0
1560 MSC	Ihagee Anastigmat F/4.5 in Compur Shutter .. 10 12 6
1560 ZSC	Zeiss Tessar F/4.5 .. 12 10 0
—	Extra Slides .. 0 2 0
—	Film Pack Adapter .. 0 7 0
—	Leather Case, velvet lined, shoulder strap and lock and key .. 0 12 6
—	for camera only .. 1 1 0
—	Ditto, ditto, ditto for complete outfit .. 1 1 0

IHAGEE-DERBY

For Plates and Film Packs 3½ × 2½ ins.

A nicely made and well finished model, efficient and of good appearance, it is wonderful value at the very moderate price at which it is offered.

Details: Metal body covered with best grained leatherette. Leather bellows. Focussing screen with light hood. Iris diaphragm. Wire release. Brilliant finder. Tripod sockets. One metal slide. Shutter for time and instantaneous, 1/25th-1/100th second.



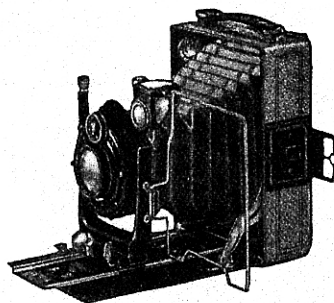
No.	Prices
	£ s. d.
310 FV	Periscopic Lens F/11 .. 2 2 0
310 KV	Ihagee Anastigmat F/6.3 .. 2 12 6
—	Extra Slides .. 0 2 0
—	Film pack adapter .. 0 7 0
—	Leather Case for camera and three slides .. 0 10 6

VIKTOR

For Plates and Film Packs
 $3\frac{1}{2} \times 2\frac{1}{2}$ ins.— $6\frac{1}{2} \times 9$ cm.,
 $\frac{1}{4}$ Plate— 9×12 cm.

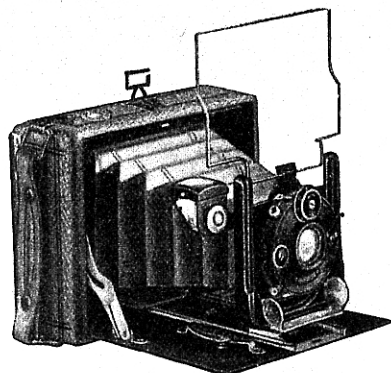
A really well designed and beautifully finished camera at a moderate figure, fitted with the new radial focussing lever.

Details: Metal body covered with finest grained leatherette ($\frac{1}{4}$ plate model is covered with genuine leather). Aluminium baseboard and front black enamelled. The $\frac{1}{4}$ plate (9×12 cm.) is fitted with rising, falling and sliding front. Focussing screen with light hood. Cable release. Iris diaphragm. Brilliant finder with spirit level. Tripod sockets. Three metal slides.



No.	No. 510, $3\frac{1}{2} \times 2\frac{1}{2}$. Lens Focus 10.5 cm.	Prices
510 KV	Ihagee Anastigmat F/6.3, in 3-speed shutter	£ s. d. 3 7 6
510 MI	Ihagee Anastigmat F/4.5 in Ibsor 7-speed shutter	5 5 0
—	Extra Slides	0 2 0
—	Film Pack Adapter	0 7 0
—	Leather Case, velvet lined, with lock and key	0 12 6

No.	No. 520, $4\frac{1}{2} \times 3\frac{1}{2}$ — 9×12 cm. Lens Focus 13.5 cm.	Prices
520 KI	Ihagee Anastigmat F/6.3, in Ibsor 7-speed shutter	£ s. d. 6 0 0
520 MI	Ihagee Anastigmat F/4.5, ditto	7 0 0
—	Extra Slides	0 2 3
—	Film Pack Adapter	0 9 0
—	Leather Case, velvet lined, with lock and key	0 15 0



VENUS

For Plates and Film Packs
 $3\frac{1}{2} \times 2\frac{1}{2}$ ins.— $6\frac{1}{2} \times 9$ cm.

A horizontal model of best construction, fitted with all movements and radial focussing lever. An ideal camera for landscape and general photography.

Details: Body covered with real leather. Leather bellows. Aluminium baseboard and lens standard black enamelled. Rising and falling front. Focussing screen with light hood. Cable release. Iris diaphragm. Brilliant finder. Wire view finder. Tripod sockets. Three metal slides.

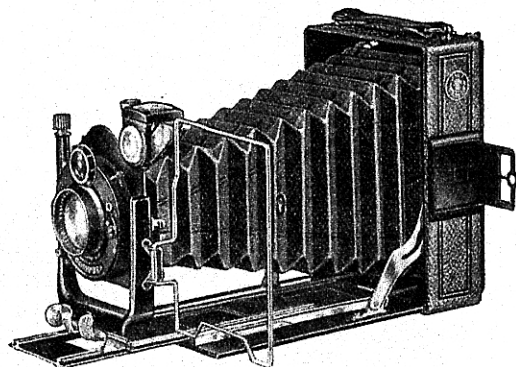
No.	No. 610, $3\frac{1}{2} \times 2\frac{1}{2}$. Lens Focus 10.5 cm.	Prices
610 KV	Ihagee Anastigmat F/6.3, in 3-speed shutter	£ s. d. 3 15 0
610 MI	Ihagee Anastigmat F/4.5 in Ibsor 7-speed shutter	5 10 0
610 MSC	Ihagee Anastigmat F/4.5, in Compur shutter with self-release	7 5 0
610 TSC	Hugo Meyer Double Anastigmat Veraplan F/4.5 in Compur shutter with self-release	8 10 0
—	Extra Slides	0 2 0
—	Film Pack Adapter	0 7 0
—	Leather Case, velvet lined, with lock and key	0 12 6

DUPLEX

For Plates and Film Packs $3\frac{1}{2} \times 2\frac{1}{2}$ — $6\frac{1}{2} \times 9$ cm. $\frac{1}{4}$ plate— 9×12 cm.
Postcard— 10×15 cm.

A real camera de luxe, with double extension. It is replete with every possible movement and is an outstanding example of modern camera construction.

Details: Body made of light metal, covered with finest Morocco leather. Baseboard black enamelled. Leather bellows. Front black enamelled. Rising, falling and sliding front. Focussing screen, with light hood. Cable release. Iris diaphragm. Brilliant finder, with spirit level. Wire view finder, with sight. Infinity stop with automatic release. Tripod sockets. Three metal slides.



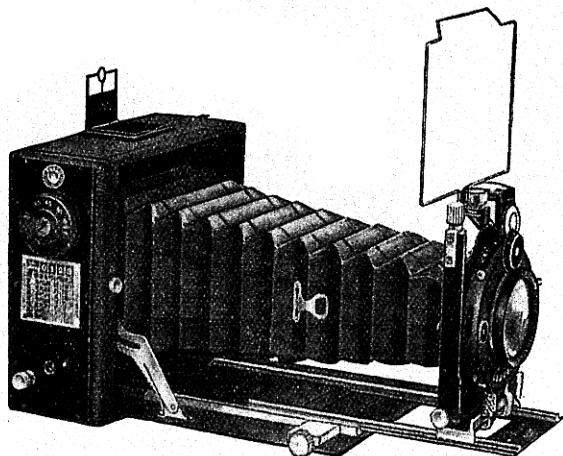
No.	No. 710, $3\frac{1}{2} \times 2\frac{1}{2}$. Lens Focus 10.5 cm.	Prices
710 KI	Ihagee Anastigmat F/6.3, in Ibsor 7-speed shutter	£ s. d. 6 5 0
710 MSC	Ihagee Anastigmat F/4.5, in Compur shutter with self-release	8 8 0
710 PSC	Ihagee Trioplan F/3.8, in Compur shutter with self-release	10 5 0
710 TSC	Hugo Meyer Double Anastigmat Veraplan F/4.5, in Compur shutter with self-release	9 12 6
710 ZSC	Zeiss Tessar F/4.5, in Compur shutter with self-release	10 5 0
—	Extra Slides	0 2 0
—	Film Pack Adapter	0 7 0
—	Leather Case, velvet lined, for camera and three slides	0 17 6

No.	No. 720, $4\frac{1}{2} \times 3\frac{1}{2}$ — 9×12 cm. Lens Focus 13.5 cm.	Prices
720 KI	Ihagee Anastigmat F/6.3, in Ibsor 7-speed shutter	£ s. d. 6 17 6
720 MSC	Ihagee Anastigmat F/4.5, in Compur shutter with self-release	10 0 0
720 PPC	Ihagee Trioplan F/3.5, in Compur shutter, not self-release	13 12 6
720 TSC	Hugo Meyer Double Anastigmat Veraplan F/4.5, in Compur shutter with self-release	11 5 0
720 ZSC	Zeiss Tessar F/4.5, in Compur shutter with self release	12 5 0
—	Extra Slides	0 2 3
—	Film Pack Adapter	0 9 0
—	Leather Case, velvet lined, for camera and three slides	1 1 0

No.	No. 730, Postcard— 10×15 cm. Lens Focus 16.5 cm.	Prices
730 MC	Ihagee Anastigmat F/4.5, in Compur shutter	£ s. d. 12 0 0
730 TC	Hugo Meyer Double Anastigmat Veraplan F/4.5, in Compur shutter	14 0 0
730 ZC	Zeiss Tessar F/4.5, in Compur shutter	17 5 0
—	Extra Slides	0 3 0
—	Film Pack Adapter	0 12 0
—	Leather Case, velvet lined, for camera and three slides	1 10 0

FOCAL PLANE DUPLEX

For Plates and Film Packs



The Focal Plane Duplex is a horizontal model fitted with the IHAGEE patented Self-Capping Focal Plane Shutter, giving a range of speeds from 1/15th to 1/1000th of a second and works entirely without vibration. It is also fitted with a Compur Shutter with self release, giving speeds from 1 second to 1/200th second. The Focal Plane Duplex is, therefore, a truly universal instrument, capable of every class of photographic work.

Details: Camera body made of well seasoned wood, covered with real leather. Aluminium base-board black enamelled. Leather bellows. Focussing screen with light hood. Rising, falling and sliding front. Patent release. Iris diaphragm. Brilliant finder, with spirit level. Wire view finder, with sight. Infinity stop with automatic release. Tripod sockets. 3 metal slides covered with leather.

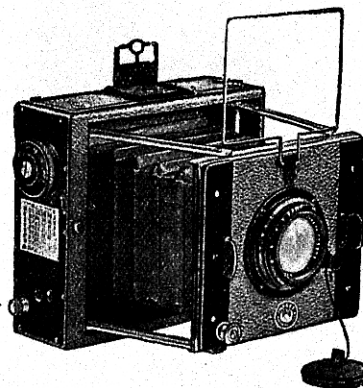
No.	No. 1010, 3½ × 2½. Lens Focus 10.5 cm.	Prices
		£ s. d.
1010 MSC	Ihagee Anastigmat F/4.5	15 10 0
1010 PPSC	Ihagee Trioplan F/3.5	18 10 0
1010 TSC	Hugo Meyer Double Anastigmat Veraplan, F/4.5	16 15 0
1010 ZSC	Zeiss Tessar F/4.5	17 7 6
1010 QSC	Zeiss Tessar F/3.5	20 15 0
—	Extra Slides, leather covered	0 3 0
—	Film Pack Adapter, leather covered	0 8 0
—	Leather Case, velvet lined, with lock and key	1 10 0

No.	No. 1020, 9 × 12 cm. or ¼ plate. Lens Focus 13.5 cm.	Prices
		£ s. d.
1020 MSC	Ihagee Anastigmat F/4.5	18 10 0
*1020 PPC	Ihagee Trioplan F/3.5	21 10 0
1020 TSC	Hugo Meyer Anastigmat Veraplan F/4.5	19 15 0
1020 ZSC	Zeiss Tessar F/4.5	20 15 0
*1020 QC	Zeiss Tessar F/3.5	25 0 0
—	Extra Slides, leather covered	0 3 6
—	Film Pack Adapter, leather covered	0 10 0
—	Leather Case, velvet lined, with lock and key	2 5 0

* The Compur Shutters for F/3.5 lenses are not fitted with self-release.

SPORT AND PRESS CAMERA

For Plates and Film Packs



The best camera for Sport and Press photographs. Simple in construction. Reliable in action.

One touch and the camera is ready for work and sharply focussed at infinity. Close focussing is done by the focussing mount of the lens.

Body covered with real leather. Metal lens panel, with rising movement. Focal plane shutter for time, "bulb" and instantaneous exposures of 1/15 to 1/1000th second. Self-capping blind works without vibration. Direct vision finder, with sight. 3 metal slides in case. Tripod sockets.

No.	No. 1810, 3¼ × 2¼. Lens Focus 12 cm.	Prices
		£ s. d.
1810 M	Ihagee Anastigmat F/4.5	14 0 0
1810 P	Ihagee Trioplan F/3.5	18 17 6
1810 T	Hugo Meyer Double Anastigmat Veraplan F/4.5	15 5 0
1810 Y	Hugo Meyer Plasmast F/4.5	23 12 6
1810 Z	Zeiss Tessar F/4.5	20 17 6
1810 Q	Zeiss Tessar F/3.5	24 0 0
—	Extra Slides each	0 2 0
—	Film Pack Adapter	0 7 0
—	Leather Case, velvet lined, with lock and key	1 10 0

No.	No. 1820, 9 × 12 cm. or ¼ plate. Lens Focus 15 cm.	Prices
		£ s. d.
1820 M	Ihagee Anastigmat F/4.5	16 2 6
1820 P	Ihagee Trioplan F/3.5	23 5 0
1820 T	Hugo Meyer Double Anastigmat Veraplan F/4.5	19 10 0
1820 Y	Hugo Meyer Plasmast F/4.5	28 15 0
1820 Z	Zeiss Tessar F/4.5	24 17 6
1820 Q	Zeiss Tessar F/3.5	30 10 0
—	Extra Slides each	0 2 3
—	Film Pack Adapter	0 9 0
—	Leather Case, velvet lined, with lock and key	2 5 0

No.	No. 1830, 10 × 15 cm., Post-card. Lens Focus 16.5 cm.	Prices
		£ s. d.
1830 T	Hugo Meyer Double Anastigmat Veraplan F/4.5	25 0 0
1830 Y	Hugo Meyer Plasmast F/4.5	34 0 0
1830 Z	Zeiss Tessar F/4.5	31 0 0
1830 Q	Zeiss Tessar F/3.5	39 10 0
—	Extra Slides each	0 3 0
—	Film Pack Adapter	0 12 0
—	Leather Case, velvet lined with lock and key	2 10 0

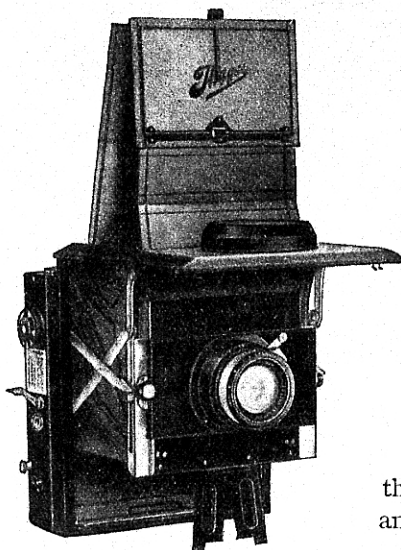
PATENT FOLDING REFLEX

for Sports, Press and Advanced Amateurs

For Plates and Film Packs $3\frac{1}{2} \times 2\frac{1}{2}$ — $6\frac{1}{2} \times 9$ cm.

For Plates and Film Packs $4\frac{1}{4} \times 3\frac{1}{4}$ — 9×12 cm.

For Plates and Film Packs Postcard— 10×15 cm.



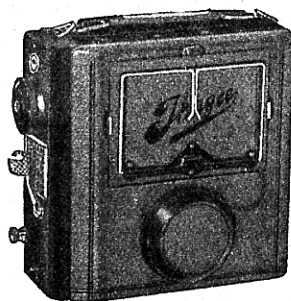
The Ihagee Patent Folding Reflex is only slightly larger than an ordinary folding-camera. It can be opened ready for exposure with one movement and at the same time is automatically focused for "infinity."

The patent shutter, giving speed from $\frac{1}{5}$ to $\frac{1}{1000}$ second, has a covered mechanism, a self-capping blind and works entirely without vibration.

The mirror rests on a base, thus ensuring that it maintains an angle of 45° .

Covered with best Morocco leather and fitted with leather bellows, the Ihagee Patent Folding Reflex is an instrument of the very highest class, absolutely rigid, when extended. It is beautifully finished and of elegant appearance.

Equipment. 3 metal slides covered with leather in leather-case. Film pack adapter covered with leather. Shoulder strap. Patent release. Wire view-finder with sight.



PATENT FOLDING REFLEX

No.	No. 1110, $3\frac{1}{2} \times 2\frac{1}{2}$, Lens Focus 12 cm.	Prices
1110 T	Hugo Meyer Double Anastigmat Veraplan F/4.5	£ s. d. 29 5 0
1110 Y	Hugo Meyer Plasmal F/4.5	38 0 0
1110 Z	Zeiss Tessar F/4.5	35 5 0
—	Extra Slides, leather covered	0 3 0
—	Leather Case, velvet lined, with lock and key	1 10 0

No.	No. 1120, 9×12 cm. or $\frac{1}{4}$ plate, Lens Focus 15 cm.	Prices
1120 P	Ihagee Trioplan F/3.5	£ s. d. 39 10 0
1120 T	Hugo Meyer Double Anastigmat Veraplan F/4.5	35 10 0
1120 Y	Hugo Meyer Plasmal F/4.5	45 0 0
1120 Z	Zeiss Tessar F/4.5	40 17 6
—	Extra Slides, leather covered	0 3 6
—	Leather Case, velvet lined, with lock and key	2 5 0

No.	No. 1130, 10×15 cm.—Post card. Lens Focus 16.5 cm.	Prices
1130 T	Hugo Meyer Double Anastigmat Veraplan F/4.5	£ s. d. 43 15 0
1130 Y	Hugo Meyer Plasmal F/4.5	52 15 0
1130 Z	Zeiss Tessar F/4.5	49 17 6
—	Extra Slides, leather covered	0 4 0
—	Leather Case, velvet lined, with lock and key	2 10 0

PATENT FOLDING REFLEX

With Revolving Back for Upright or Oblong pictures

The Square Folding Reflex differs from the model described above in so far as the back focussing glass frame can be rotated for oblong or upright pictures without any alteration in the position of the camera. For this reason the camera is more oblong in shape but in No. 1920 the full image is not shown on the upper screen to avoid unnecessary bulk.

No.	No. 1910, $3\frac{1}{2} \times 2\frac{1}{2}$, Lens Focus 15 cm.	Prices
1910 T	Hugo Meyer Double Anastigmat Veraplan F/4.5	£ s. d. 32 10 0
1910 Y	Hugo Meyer Plasmal F/4.5	41 10 0
1910 Z	Zeiss Tessar F/4.5	38 0 0
—	Extra Slides, leather covered	0 3 0
—	Leather Case, velvet lined, with lock and key	2 10 0

No.	No. 1920, 9×12 cm. or $\frac{1}{4}$ plate. Lens Focus 16.5 cm.	Prices
1920 T	Hugo Meyer Double Anastigmat Veraplan F/4.5	£ s. d. 41 0 0
1920 Y	Hugo Meyer Plasmal F/4.5	50 0 0
1920 Z	Zeiss Tessar F/4.5	47 0 0
1920 Q	Zeiss Tessar F/3.5	55 0 0
—	Extra Slides, leather covered	0 3 6
—	Leather Case, velvet lined, with lock and key	2 10 0

NIGHT REFLEX CAMERA

For Plates and Film Packs

4.5 × 6 cm. and 6.5 × 9 cm. (3½ × 2½ ins.)



The "Night" Reflex fills the demand for a camera fitted with the largest aperture lenses obtainable. Pictures may be successfully made in very dull light, and even in theatres with the ordinary stage lighting. This places a power in the hands of the user which is impossible with ordinary cameras. An instrument fitted with such high power objectives demands precision workmanship of the finest quality and this

will be found in the "Night" Reflex. The body is solidly made and covered with finest quality leather. It has a revolving back for Vertical or Horizontal pictures, fitted with direct focussing screen in addition to the Reflex attachment. The shutter is the renowned Ihagee Focal-plane giving speeds from $\frac{1}{15}$ to $\frac{1}{1000}$ second as well as time exposures. The lens is fitted in a Helicoidal Jacket and may be focussed to one metre. Also fitted with wire frame Finder and equipped with 6 metal Dark Slides in Case.

No.	4.5 × 6 cm. Focal Length 9 cm.	Prices
2500 B	Hugo Meyer Plasmat F/1.5	£ s. d. 60 0 0
2500 L	Hugo Meyer Plasmat F/2	56 0 0

No.	6.5 × 9 cm., 3½ × 2½. Focal Length 12.5 cm.	Price
2510 L	Hugo Meyer Plasmat F/2	75 0 0
—	Extra Slides for 2500, 1/9; 2510	0 2 0
—	Best Leather Cases lined velvet, for 2500 £15 0/-; for 2510	2 5 0
—	Film Pack Adapters for 2500 6/-; for 2510	0 7 6

ULTRIX STEREO

No. 1690

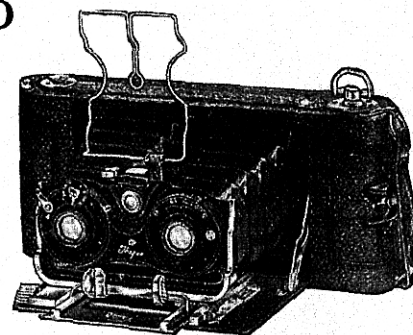
For Roll Films 7½ × 12½ cm.
(4½ × 2½ ins.)

The Ultrix Stereo should make a special appeal to the Stereoscopic worker. In every way a first-class instrument, it is beautifully finished and is fitted with every necessary movement.

Details: Camera body covered with genuine leather. Leather bellows. Baseboard black enamelled. Front of solid brass, heavily nickelled. Brilliant finder. Wire view finder. Iris diaphragms. Patent release. Infinity stop with automatic release, when adjusted to near focus. Tripod bush.

Model V: Automatic Shutter.

Model C: Compur Shutter.



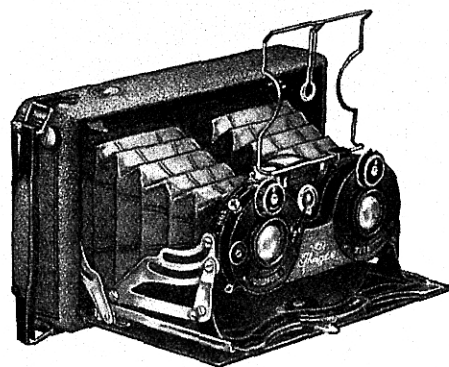
No.		Model V.	Model C.
1690 HV	Ihagee Anastigmat F/6.8	£ s. d. 10 15 0	£ s. d. 18 5 0
1690 TC	Hugo Meyer Double Anastigmat Veraplan F/4.5	—	23 5 0
1690 WC	Zeiss Tessar F/6.3	—	—

STEREO AUTOMAT

For Plates and Film Packs
6 × 13 cm. (5½ × 2½ ins.)

The smallest and most convenient Stereo camera taking the popular 6 × 13 size. Very flat for the pocket, and this coupled with its beautiful finish should make it a first favourite with stereoscopic enthusiasts. When opening the camera the lenses are automatically focussed for "Infinity," the camera is therefore immediately ready for exposure. Focussing for near objects by radial lever.

Details: Body covered with real leather. Leather bellows. Baseboard black enamelled. Nickel fittings. Focussing screen with light hood. Brilliant finder, with spirit level. Wire view finder. Patent release. Iris diaphragms. Tripod socket. Three metal slides.



Model V Automatic Shutter. **Model C** Compur Shutter.

No.		Prices
1715 HV	Ihagee Anastigmat F/6.8 in Automatic Shutter, 1/25th to 1/100th second	£ s. d. 12 10 0
1715 TC	Hugo Meyer Double Anastigmat Veraplan F/4.5 in Compur shutter	20 0 0
—	Extra Slides	0 3 0
—	Film Pack Adapter	0 12 0
—	Leather Case, velvet lined, for camera and three slides	1 1 0

UNIVERSAL LUMIMAX ENLARGERS

These Enlargers are complete with Lamp House and bellows body on sliding rails, with rack and pinion for fine focussing.

The long extension allows for making reductions.

Exposing slide and ruby screen for focussing direct on to the Bromide paper.

Hinged glass front easel to take up to 12×10 for $3\frac{1}{2} \times 2\frac{1}{2}$ size and 15×12 for $4\frac{1}{4} \times 3\frac{1}{4}$.

May be used horizontally or hung on the Dark Room wall for vertical work.

Fitted with Ihagee Anastigmat F6.8.

Prices complete with Flex, Plug, Switch and Easel (without Lamp) :

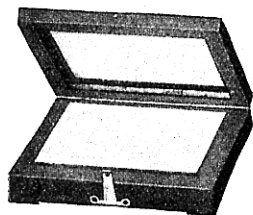
	£	s.	d.
No. 5310. For $3\frac{1}{2} \times 2\frac{1}{2}$			
Films or Plates ..	4	15	0
„ 5320. For $4\frac{1}{4} \times 3\frac{1}{4}$			
Films or Plates ..	5	0	0
Lamps, 75 watt each	0	4	9

IHAGEE SIMPLEX ENLARGERS

This Model is similar in construction to the Universal, but without the bellows and lens, being arranged for use with the amateur's own camera. It may be used horizontally upon a table or hung on the dark room wall for vertical work by means of the extra frame No. 5200G.

Prices complete with Flex, Plug and Switch (without Lamp) :

	£	s.	d.
No. 5210. For $3\frac{1}{2} \times 2\frac{1}{2}$ (6.5 x 9 cm.)			
Cameras ..	1	10	0
„ 5220. For $4\frac{1}{4} \times 3\frac{1}{4}$ (9 x 12 cm.)			
Cameras ..	1	12	6
„ 5546. Hinged glass front easel to take up to 12×10 for $3\frac{1}{2} \times 2\frac{1}{2}$ size ..	0	13	6
„ 5547. Ditto, to take up to 15×12 for $\frac{1}{4}$ -plate size ..	0	16	6
„ 5200G. Frame for supporting Enlarger on wall ..	0	10	0



No. 5546

PROFESSIONAL LUMIMAX ENLARGERS

For Negatives or Films up to $\frac{1}{4}$ -plate

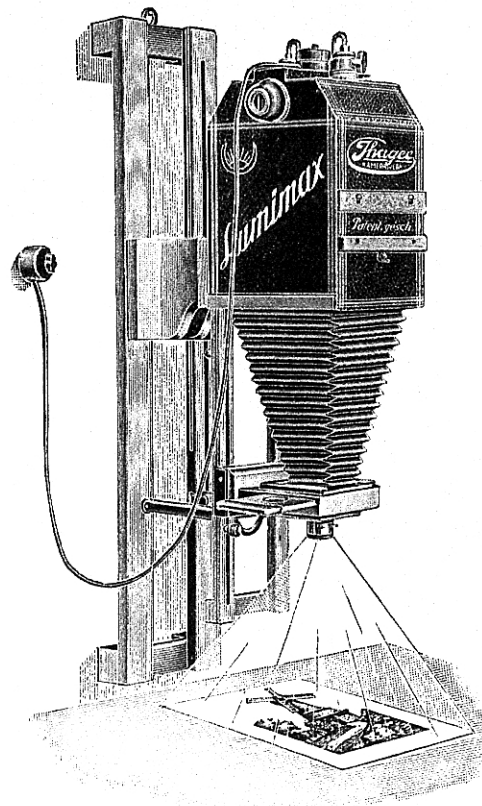
The Professional Lumimax is made chiefly for trade workers. It is constructed to accommodate two lamps with independent switches so that certain parts of the negatives may be illuminated for a longer time.

Rack and pinion adjustment is provided for fine focussing. The exposure slide has a red disc to facilitate adjustment on the Bromide paper.

A large frame is included to allow the apparatus to be hung on the wall of the dark room, 21 inches above the work table, and enlargements may be made up to any convenient size.

It is also suitable for reductions.

The lens is an Anastigmat F/6.8.



	£	s.	d.
No. 5340H. Complete with Flex, Plug and Switches (without Lamp)	8	15	0
75 watt Lamp extra ..	0	4	9
Carriers. $\frac{1}{4}$ -plate to $\frac{1}{2}$ -plate, 2/6 ; $\frac{1}{2}$ -plate to $3\frac{1}{2} \times 2\frac{1}{2}$, 1/6 ; $3\frac{1}{2} \times 2\frac{1}{2}$ to V.P.K. ..	0	1	6
No. 5547. Hinged front Glass Enlarging frame up to 15×12 ins. fitted with bush for screwing on to a tripod, making it an enlarging table ..	0	16	6

Ihagee Cameras

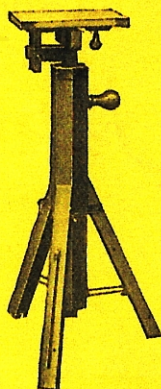
WOOD TRIPODS



No. 8101.



No. 8103.



No. 8201.

		£	s.	d.
No. 8101.	Three-fold, with snap joints, made of best hardwood	0	15	6
No. 8103.	Extra Strong three-fold Tripod, suitable for professional work. Made of hardwood, dull black finish. The legs are locked at the head to prevent slipping	1	1	0
No. 8201.	Studio Tripod at a moderate price. Wood screw for fixing and adjustable head; with sliding legs	1	16	0

METAL TRIPODS

Round Heads

Flat Top

No.			Length		Price		No.	Price	
			Closed	Open				s.	d.
7043.	3 draw	..	16 ins.	43 ins.	6	0	7061.	10	0
7046.	4	..	14 "	50 "	8	0	7063.	11	0
7048.	5	..	13 "	53 "	9	0	7071.	13	6
7056.	7	..	12 "	50 "	11	0			



BEWI

Precision Exposure Meter

(Trade Mark Registered)

Something quite new! A perfect optical instrument for accurately determining an exposure, either outdoor or interior. The actual picture is seen, surrounded by a ring of numbers, the highest number clearly visible is the factor to set against the exposure scale. Beautifully finished, and complete in leather case. Price 21/-